



6-pole, 80 A (change-over)

**Technical data**

**Ex-Main current switches 80 A**

Marking accd. to 2014/34/EU	Ⓔ II 2 G Ex de IIC T6 / Ⓔ II 2 D Ex tD A21 IP66 T80 °C	
EC-Type Examination Certificate	PTB 00 ATEX 1091	
Permissible ambient temperature	-20 °C up to +40 °C <sup>1)</sup>	
Rated voltage	up to max. 690 V	
Rated current	max. 80 A	
Frequency	50/60 Hz	
Rated making/breaking capacity AC-3 accd. EN 60947-3	U <sub>e</sub> 230 V / I <sub>e</sub> 80 A U <sub>e</sub> 400 V / I <sub>e</sub> 80 A U <sub>e</sub> 500 V / I <sub>e</sub> 80 A U <sub>e</sub> 690 V / I <sub>e</sub> 63 A	
Back-up fuse	up to 400 V AC: 80 A gG up to 500 V AC: 80 A gG up to 690 V AC: 63 A gG	
Connecting terminals	main contact auxiliary/signal contact	2 x 16 mm <sup>2</sup> 2 x 4 mm <sup>2</sup>
Protection class	I	
Degree of protection accd. to EN 60529	IP66	
Cable glands/enclosure drilling	M25 cable gland see ordering details M50 cable gland see ordering details Option: metal flange with thread	
Weight	3-pole 4-pole	approx. 6.50 kg approx. 9.00 kg
Enclosure material	glass-fibre reinforced polyester	
Enclosure colour	black	
Padlocking facility	can be locked in OFF position with 3 commercially available padlocks (Ø max. 6 mm)	

1) Other ambient temperatures on request

## GHG 264 - Ex-main current switches 80 A



6-pole, 80 A (change-over)

### Ordering details

Content	Cable gland	Order No.
<b>Ex-Main current switches 80 A</b>		
<b>Version with 2 auxiliary contacts (1 NO; 1 x NC)</b>		
4-pole	0 - I without auxiliary contact	2 x M50, 2 x M25, 1 x screw plug ON-OFF switch <b>GHG 264 0022 R9015</b>
3-pole	I - 0 - II	3 x M50, 1 x M25 screw plug Change-over <b>GHG 264 0019 R0003</b>
3-pole	I - 0 - II	2 x M50, 1 x M25 screw plug Reversing switch <b>GHG 264 0019 R0004</b>

Customized version on request, auxiliary contacts in Ex ia available

### Accessories

Type	Application	Fixing method	Order No.
<b>Mounting plate for Ex-Main current switches 80 A 3- and 4-pole</b>			
Size 3	2 x pipe clamp	screw-on <sup>1)</sup>	<b>GHG 610 1953 R0110</b>

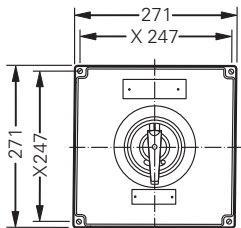
<sup>1)</sup> observe mounting distance

Type	Application	OU	Order No.
<b>Accessories for mounting plates</b>			
Label holder with label (unlabelled) for mounting plate size 1, 2, 2A and 3		10	<b>GHG 610 1953 R0057</b>
Mounting set for pipes 1" (of 27 - 30 mm) for mounting plates with pipe fixing		10	<b>GHG 610 1953 R0020</b>

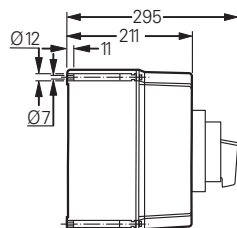
Type	Application	OU	Order No.
<b>Protective canopy for mounting plate</b>			
Size 3	for pipe clamp plate size 3 vertical	1	<b>GHG 610 1955 R0104</b>
Size 3A	for mounting plates wall/trellis fixing size 3 vertical	1	<b>GHG 610 1955 R0105</b>
Size 3B	for mounting plates pipe fixing size 3 horizontal	1	<b>GHG 610 1955 R0106</b>

Please pay attention that only order units (OU) according to the ordering details can be delivered.

### Dimension drawing



GHG264 0019 R....



X = fixing dimensions

Dimensions in mm