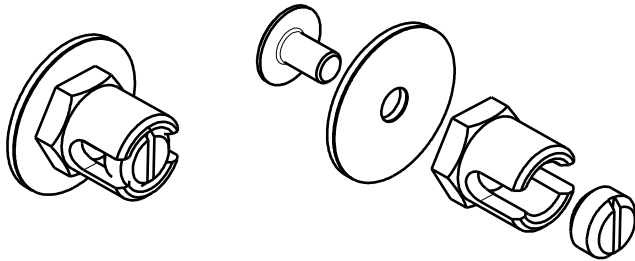
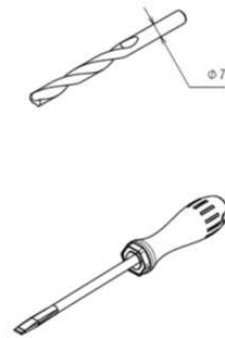


Earth Grounding Connection (EGC)

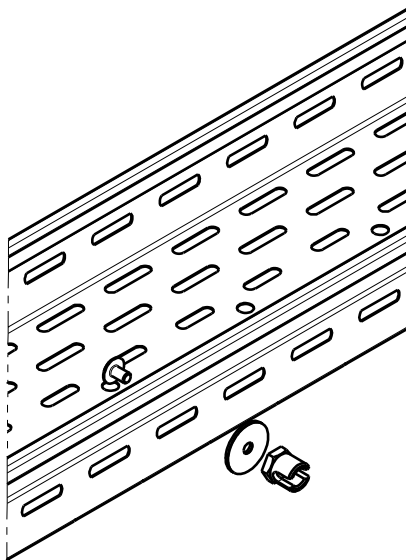
References: 585357 / 585367 / 585377



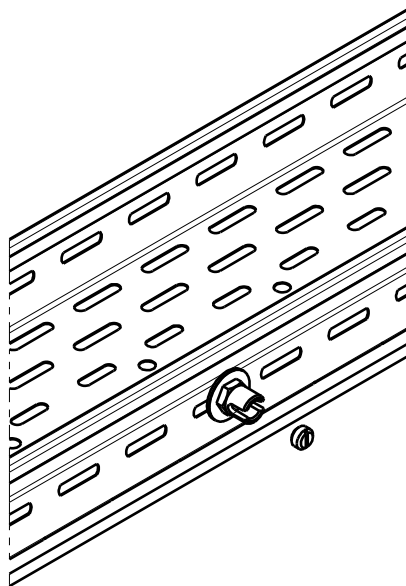
Utilities:



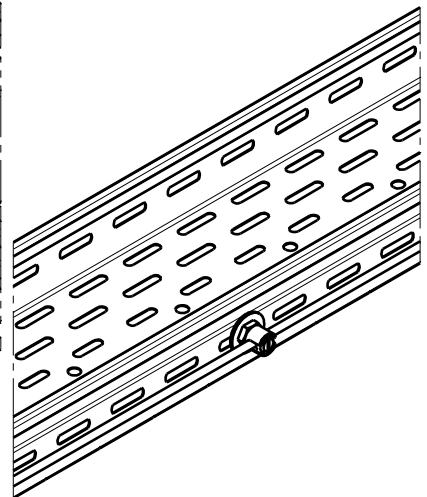
Item	Description	Material	Section (mm ²)
585357	BLT6-16 CU EARTH TERMINAL	COPPER	16
585367	BLT6-35 CU EARTH TERMINAL		35
585377	BLT6-50 CU EARTH TERMINAL		50



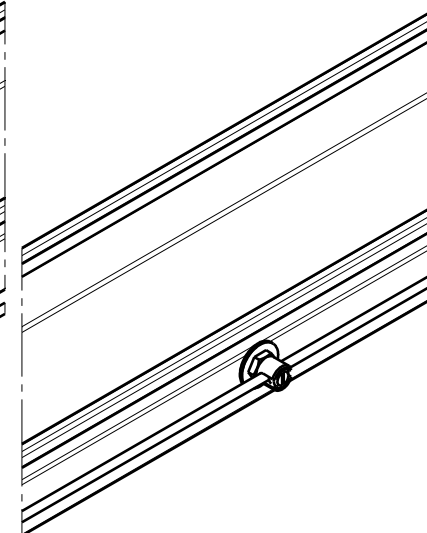
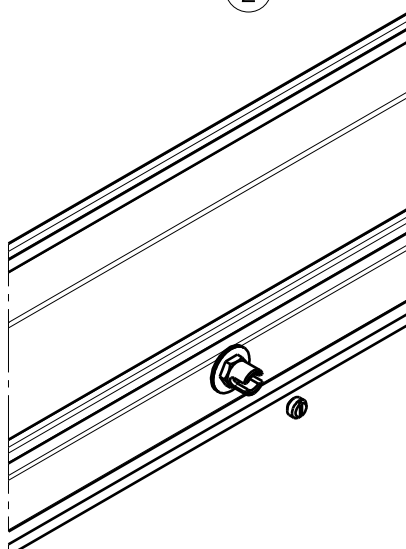
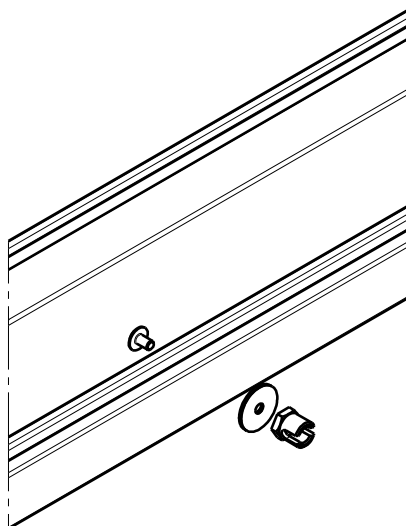
1



2



3



Earth Grounding Connection (EGC)

References: 585357 / 585367 / 585377

	ITEM pregalvanized (PG)	ITEM hot deep galvanized (HDG)	Cross Sectional Area (mm ²)		ITEM pregalvanized (PG)	ITEM hot deep galvanized (HDG)	Cross Sectional Area (mm ²)
H60 perforated Male / Female / Auto	480110		108,00	H60 perforated symmetric	480561	480571	108,00
	480111		121,80		480562	480572	121,80
	480112		151,80		480563	480573	151,80
	480113		177,60		480564	480574	177,60
	480114		276,00		480565	480575	276,00
	480115		392,40		480566	480576	392,40
	480116		457,20		480567	480577	457,20
H60 perforated Male / Female	480117		522,00	480568	480578	522,00	H60 blind symmetric
	481219	482110	108,00	480301	481061	124,80	
	481220	482111	121,80	480302	481062	138,60	
	481221	482112	151,80	480303	481063	168,60	
	481222	482113	177,60	480304	481064	198,60	
	481223	482114	276,00	480305	481065	323,25	
	481224	482115	392,40	480306	481066	474,30	
H60 blind Male / Female	481225	482116	457,20	480307	481067	564,30	H100 perforated Male / Female
	481226	482117	522,00	480308	481069	654,30	
	480719	482556	117,00	480068	482068	161,40	
	480720	482549	130,80	480069	482069	191,40	
	480730	482550	160,80	481070	482170	217,20	
	480740	482551	190,80	481071	482171	325,50	
	480760	482552	313,50	480072	482072	451,80	
H60 blind Male / Female / Auto	480770	482553	462,60	480073	482073	516,60	H100 blind Male / Female
	480780	482554	552,60	480107	482106	581,40	
	480700	482555	642,60	480030	482088	168,00	
	481120		117,00	480031	482089	198,00	
	481121		130,80	480032	482090	228,00	
	481122		160,80	480033	482091	360,00	
	481123		190,80	480092	482092	518,40	
H60 CPC	481124		313,50	480093	482093	608,40	H27 perforated Male / Female
	481125		462,60	480106	482107	698,40	
	481126		552,60	480044	482144	58,80	
	481127		642,60	480045	482145	66,60	
	481260		80,40	480046	482146	80,40	
	481261		94,20	480047	482147	110,40	
	481262		124,20	485048	485248	140,40	
H60 MBR	481263		150,00	485049	485249	189,60	
	481264		241,50	480050	482050	345,60	
	481265		351,00	480051	482051	410,40	
	481823		116,40				
	481824		130,20				
H60 Lighting	481825		160,20				
	481826		190,20				
	481827		312,75				
	487000		70,80				
	487001		84,60				
	487002		88,20				
	487003		118,20				
487004		207,00					
487005		309,60					

Earth Grounding Connection (EGC)

References: 585357 / 585367 / 585377

Table 392.60(A) - NFPA 70 NEC

Maximum Fuse Ampere Rating, Circuit Breaker Ampere Trip Setting, or Circuit Breaker Protective Relay Ampere Trip Setting for Ground-Fault Protection of Any Cable Circuit in the Cable Tray System	Minimum Cross-Sectional Area of Metal			
	Steel Cable Trays		Aluminum Cable Trays	
	mm ²	in. ²	mm ²	in. ²
60	129	0.20	129	0.20
100	258	0.40	129	0.20
200	451.5	0.70	129	0.20
400	645	1.00	258	0.40
600	967.5	1.50	258	0.40
1000	--	--	378	0.60
1200	--	--	645	1.00
1600	--	--	967.5	1.50
2000	--	--	1290	2.00

Table 250.122 - NFPA 70 NEC
Table 250.122 Minimum Size Equipment Grounding Conductors for Grounding Raceway and Equipment

Rating or Setting of Automatic Overcurrent Device in Circuit Ahead of Equipment, Conduit, etc., Not Exceeding (Amperes)	Size (AWG or kcmil)	
	Copper	Aluminum or Copper-Clad Aluminum*
15	14	12
20	12	10
60	10	8
100	8	6
200	6	4
300	4	2
400	3	1
500	2	1/0
600	1	2/0
800	1/0	3/0
1000	2/0	4/0
1200	3/0	250
1600	4/0	350
2000	250	400
2500	350	600
3000	400	600
4000	500	750
5000	700	1200
6000	800	1200

Note: Where necessary to comply with 250.4(A)(5) or (B)(4), the equipment grounding conductor shall be sized larger than given in this table.

*See installation restrictions in 250.120.

Size conversion chart - AWG to mm²

AWG	mm ²	AWG	mm ²	AWG	mm ²	AWG	mm ²
30	0.05	18	0.75	6	16	4/0	120
28	0.08	17	1.0	4	25	300MCM	150
26	0.14	16	1.5	2	35	350MCM	185
24	0.25	14	2.5	1	50	500MCM	240
22	0.34	12	4.0	1/0	55	600MCM	300
21	0.38	10	6.0	2/0	70	750MCM	400
20	0.50	8	10	3/0	95	1000MCM	500