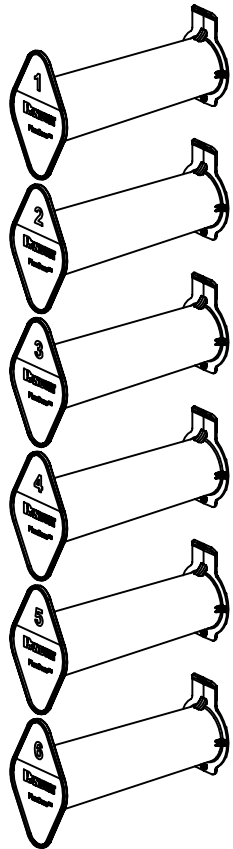
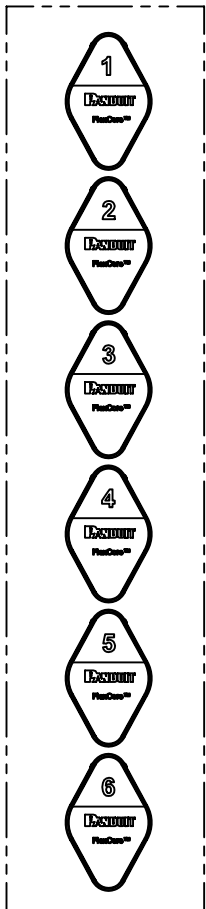
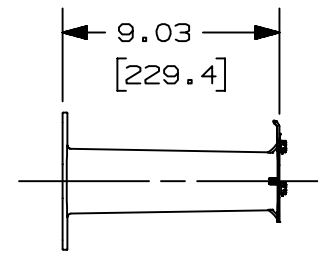
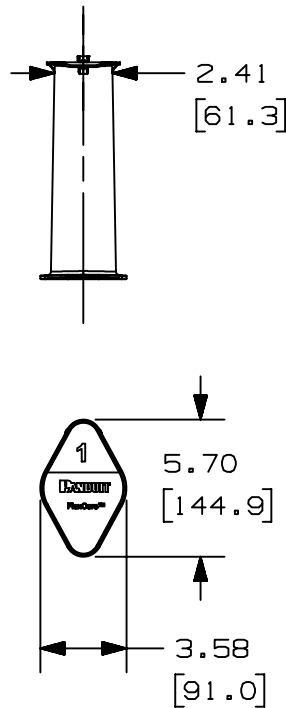


THIS COPY IS PROVIDED ON A RESTRICTED BASIS AND IS NOT TO BE USED IN ANY WAY DETRIMENTAL TO THE INTERESTS OF PANDUIT CORP.



FRONT VIEW

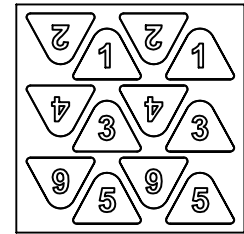
ISO VIEW



PANDUIT PART NO.	WEIGHT
FDUSP6	2.6 LBS/EACH 1.18 kg/EACH

NOTES:

- VISIT OUR ON-LINE CATALOG AT [WWW.PANDUIT.COM](http://WWW.PANDUIT.COM) FOR A CURRENT LIST OF PRODUCTS APPLICABLE FOR USE WITH THIS PART.
- PRIMARY DIMENSIONS ARE IN ENGLISH
- PARTS SUPPLIED:  
(6) FIBER SPOOLS WITH COLOR COORDINATED LABELS  
(1) ENCLOSURE LABEL SHEET



ENCLOSURE LABEL SHEET

TITLE <b>FLEXCORE FIBER SPOOL 6-PACK COLOR COORDINATED KIT (FDUSP6)</b> CUSTOMER DRAWING			
ITEM REVISION NAME <b>00523EFD/00</b>		<b>PANDUIT</b>	
DATASET FILE NAME <b>00523EFD_DC/00B</b>			
UNLESS OTHERWISE SPECIFIED, DIMENSIONAL TOLERANCES ARE: IN [mm]			MATERIAL: <b>N/A</b>
DRAWING NUMBER: <b>00523EFD-DC</b>			
DRAWN BY <b>LEE</b>		DATE <b>11/15/21</b>	CHK <b>SSP</b>
SCALE <b>1:8</b>		THIRD ANGLE PROJECTION	
REV		SHT 1 OF 1	
DATE		SIZE <b>A</b>	

00B	11/15/21	LEE	SSP	GB-SJMO	DRAWING RELEASE	V090020T/01
REV	DATE	BY	CHK	APR	DESCRIPTION	ECN

D101000A/16