

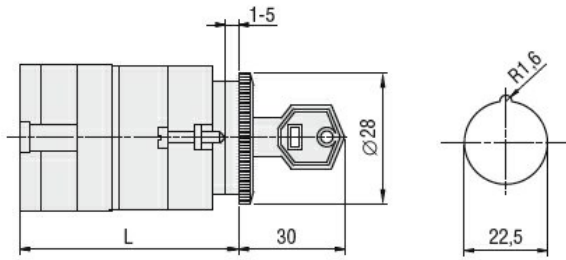


| | | | |
|---|--|----|-----|
| Product designation | Rotary cam switches | | |
| Product type designation | GF20 | | |
| General characteristics | | | |
| Switching diagram | 03 - ON/OFF spring return switch 3 poles | | |
| N° of elements | 2 | | |
| Mounting form | U12 - Front mounting without front plate with key operation for hole diam. 22mm fixing | | |
| Contact characteristics | | | |
| Rated insulation voltage U_i | IEC/EN | V | 480 |
| | UL/CSA | V | 240 |
| Rated impulse withstand voltage U_{imp} | | kV | 4 |
| Conventional free air thermal current I_{th} | IEC/EN | A | 20 |
| | UL/CSA | A | 15 |
| Rated operational voltage | | V | 480 |
| Rated operational impulse voltage | | kV | 4 |
| Maximum fuse size for short-circuit protection I_n (gG) | 10kA | A | 20 |
| | 15kA | A | 20 |
| | 25kA | A | 20 |
| Rated short time current I_{cw} | | 1s | A |
| | | | 250 |
| Conductivity | 10/5 mA/V | | |
| Operational current I_e IEC/EN | AC1/AC21A | | A |
| | | | 20 |
| AC15 | 110V | A | 10 |
| | 220/230V | A | 8 |
| | 380/400V | A | 6 |
| Rated operational power in AC | Three-phase AC-3 | | |
| | 220/230V | kW | 3 |
| Single-phase AC-3 | 380/440V | kW | 5 |
| | 110V | kW | 0.5 |
| | 220/230V | kW | 1.5 |
| | 380/440V | kW | 2 |

| | | | |
|--|----------|-----------------|-------------------|
| Three-phase AC23A | | | |
| | 220/230V | kW | 4 |
| | 380/440V | kW | 7.5 |
| Single-phase AC23A | | | |
| | 110V | kW | 0.75 |
| | 220/230V | kW | 2 |
| | 380/440V | kW | 2.5 |
| Rated operational current in DC | | | |
| DC21A | | | |
| | 48V | A | 20 |
| | 60V | A | 20 |
| | 110V | A | 4 |
| | 220V | A | 0.7 |
| | 440V | A | 0.2 |
| DC13 | | | |
| | 24V | A | 6 |
| | 48V | A | 6 |
| | 60V | A | 3 |
| | 110V | A | 1 |
| | 220V | A | 0.4 |
| | 440V | A | 0.15 |
| Power dissipation | | W | 0.8 |
| Mechanical features | | | |
| Terminals screw | | | M3 |
| Tightening torque for terminals max | | Nm | 0.5 |
| Conductor size | | | |
| AWG - Rigid cable | | | |
| | min | AWG | 20 |
| | Max | AWG | 12 |
| AWG - Flexible cable | | | |
| | min | AWG | 20 |
| | Max | AWG | 12 |
| Conductor size (IEC) - Flexible cable | | | |
| | min | mm ² | 0.5 |
| | Max | mm ² | 2.5 |
| Conductor size (IEC) - Rigid cable | | | |
| | min | mm ² | 0.5 |
| | Max | mm ² | 2.5 |
| Mechanical life | | cycles | 1x10 ⁶ |
| UL technical data | | | |
| Motor power for direct-on-line control | | | |
| for three-phase motor | | | |
| | 240V | HP | 3 |
| for single-phase motor | | | |
| | 240V | HP | 1 |
| Ambient conditions | | | |
| Temperature | | | |
| Operating temperature | | | |
| | min | °C | -25 |
| | max | °C | +55 |
| Storage temperature | | | |
| | min | °C | -40 |
| | max | °C | +70 |
| Resistance & Protection | | | |

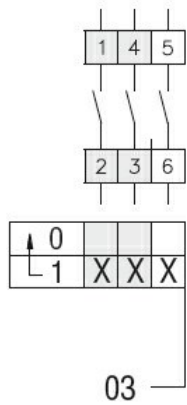
| | |
|---------------------|------|
| Frontal IP degree | IP40 |
| Terminals IP degree | IP20 |

Dimensions



| Series | L | | | |
|-------------|------|----|-------|-----|
| | 1 | 2 | 3...8 | |
| GF20 | 54,5 | 68 | 81,5 | 149 |

Wiring diagrams



Certifications and compliance

Compliance

CSA C22.2 n° 14
IEC/EN/BS 60947-1
IEC/EN/BS 60947-3
IEC/EN/BS 60947-5-1
UL60947-4-1

Certificates

cULus
EAC

ETIM classification

ETIM 8.0

EC001029 -
Selector switch,
complete