



RFU610-10600

RFU61x

RFID

SICK
Sensor Intelligence.



Ordering information

| Type | Part no. |
|--------------|----------|
| RFU610-10600 | 1091102 |

Included in delivery: Mounting kit (1)

Other models and accessories → www.sick.com/RFU61x



Detailed technical data

Features

| | |
|--------------------------|--|
| Version | Short Range |
| Product category | RFID read/write device with integrated antenna |
| Radio approval | European Union ¹⁾ South Africa United Arab Emirates |
| Frequency band | UHF (860 MHz ... 960 MHz) |
| Carrier frequency | 865.7 MHz ... 867.5 MHz |
| Output power | 25 mW (ERP, 14 dBm) |
| RFID standard | EPCglobal UHF Class 1 Generation 2, ISO/IEC 18000-6 C |
| Modulation | PR-ASK |
| Connection type | PoE, Power and Ethernet |
| Read range | ≤ 0.5 m ²⁾ |
| Antenna | Integrated |
| Transmitting power | Adjustable |
| Polarization | Circular |
| Axial ratio | Typ. 2 dB |
| Aperture angle | 110° |
| Front-to-back ratio | > 5 dB |

¹⁾ All member states of the European Union, EEA-EFTA states (Liechtenstein, Iceland, Norway), Switzerland, Turkey.

²⁾ Depending on transponder used and ambient conditions.

Mechanics/electronics

| | |
|------------------------|--|
| Connection type | 1 x M12, 4-pin male connector, A-coded 1 x M12, 8-pin female connector, X-coded 1 x M8, 4-pin female connector, A-coded 1 x USB, 5-pin micro-B socket |
|------------------------|--|

¹⁾ PoE: 48 V DC ... 57 V DC in accordance with PoE technology.

²⁾ Operation at +50 °C.

| | |
|-------------------------------|------------------------------------|
| Supply voltage | 18 V DC ... 30 V DC ¹⁾ |
| Power consumption | 6 W, standby 3 W |
| Housing | Aluminum die cast Plastic (PPS) |
| Enclosure rating | IP67 |
| Protection class | III |
| Weight | 313 g |
| Dimensions (L x W x H) | 92 mm x 80 mm x 38 mm |
| MTBF | 22 years ²⁾ |

¹⁾ PoE: 48 V DC ... 57 V DC in accordance with PoE technology.

²⁾ Operation at +50 °C.

Interfaces

| | |
|-------------------------------|---|
| Ethernet | ✓, TCP/IP, PoE, OPC UA |
| Remark | Companion Spec V1.0 from firmware 2.20 |
| Function | Data interface (read result output), Service interface |
| Data transmission rate | 10/100 MBit/s |
| PROFINET | ✓ |
| Function | PROFINET Single Port, Data interface (read result output) |
| Data transmission rate | 10/100 MBit/s |
| EtherNet/IP™ | ✓ |
| Function | Data interface (read result output) |
| Data transmission rate | 10/100 MBit/s |
| USB | ✓ |
| Remark | USB 2.0 |
| Function | Service interface |
| Digital inputs | 1 (physical, switching, trigger sensor can be connected directly to the device (port 3) - max. 40 mA) |
| Optical indicators | 4 LEDs, multi-color (device status) 4 RGB LED (Process feedback) |
| Operator interfaces | Web server |
| Configuration software | SOPAS ET ¹⁾ |
| Programming interface | Application-specific programming using the SICK AppStudio development environment |
| Memory card | microSD memory card (parameter cloning, data storage) |

¹⁾ Another alternative is to generate your own configuration tools based on the SICK command language CoLa (e.g. in your own software or on PLC function blocks).

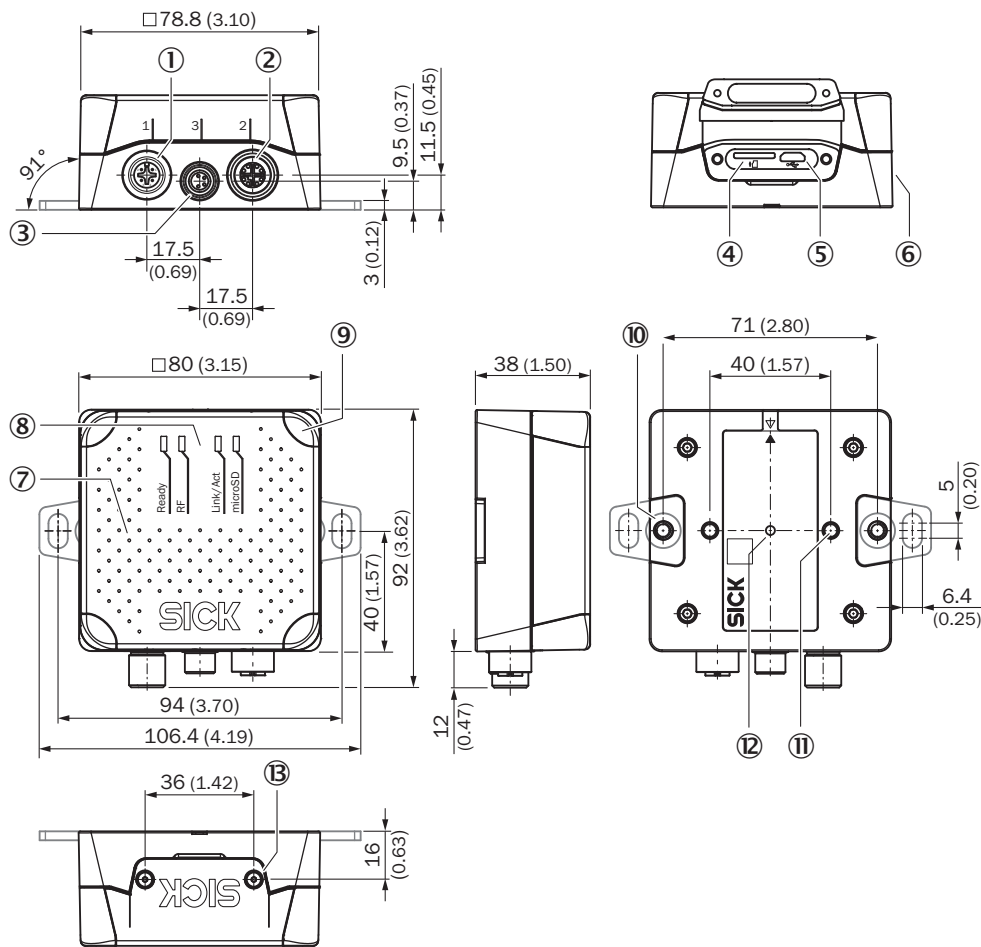
Ambient data

| | |
|--|----------------------|
| Electromagnetic compatibility (EMC) | EN 301489-3 |
| Vibration resistance | EN 60068-2-6:2007 |
| Shock resistance | EN 60068-2-27:2008 |
| Ambient operating temperature | -25 °C ... +50 °C |
| Storage temperature | -40 °C ... +70 °C |
| Permissible relative humidity | 90 %, Non-condensing |

Classifications

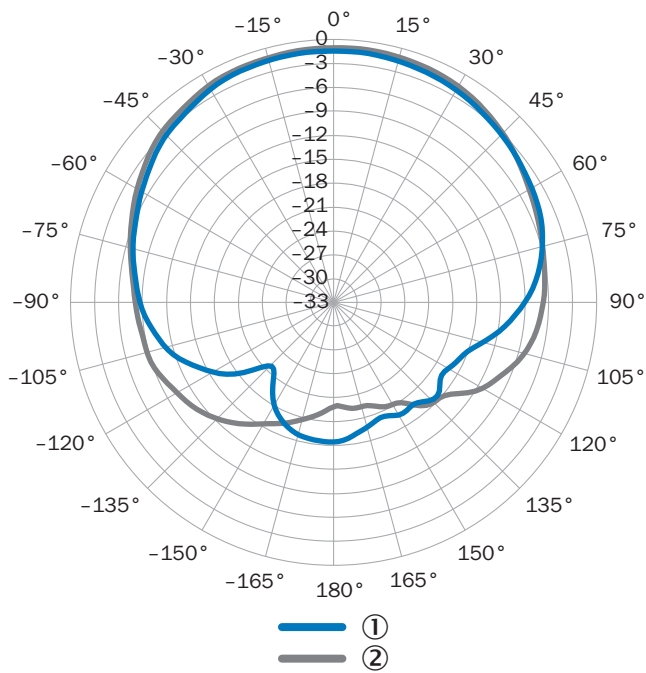
| | |
|-----------------------|----------|
| ECLASS 5.0 | 27280401 |
| ECLASS 5.1.4 | 27280401 |
| ECLASS 6.0 | 27280401 |
| ECLASS 6.2 | 27280401 |
| ECLASS 7.0 | 27280401 |
| ECLASS 8.0 | 27280401 |
| ECLASS 8.1 | 27280401 |
| ECLASS 9.0 | 27280401 |
| ECLASS 10.0 | 27280401 |
| ECLASS 11.0 | 27280401 |
| ECLASS 12.0 | 27280401 |
| ETIM 6.0 | EC002998 |
| ETIM 7.0 | EC002998 |
| ETIM 8.0 | EC002998 |
| UNSPSC 16.0901 | 52161523 |

Dimensional drawing (Dimensions in mm (inch))



- ① Port 1: Power (male connector, M12, 4-pin, A-coded)
- ② Port 2: PoE (female connector, M12, 8-pin, X-coded)
- ③ Port 3: Trigger (female connector, M8, 4-pin, A-coded)
- ④ Slot for microSD memory card
- ⑤ "USB" connection (female connector, 5-pin, type Micro-B) interface for temporary use (service)
- ⑥ Side type label
- ⑦ Cover with integrated antenna
- ⑧ 4 x multi-colored LED (status)
- ⑨ 4 x RGB LED (process feedback)
- ⑩ 2 x M5 blind tapped holes, 6 mm deep for attaching the mounting straps
- ⑪ 2 x M5 blind tapped holes, 7 mm deep for mounting the device
- ⑫ Type label with integrated pressure compensation membrane
- ⑬ 2 x screw (M2,5 socket screw), captive, for side cover

Radiation pattern



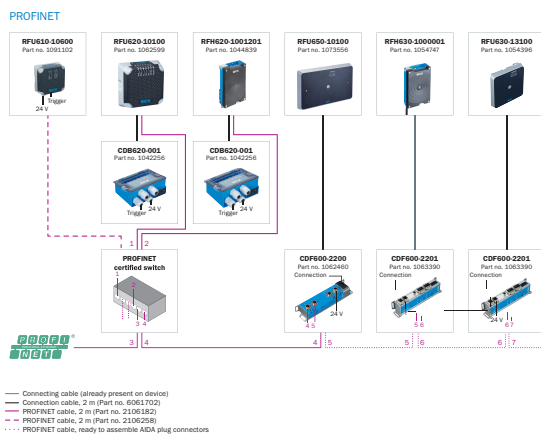
Measured antenna gain in dBic at 866.5 MHz, LHCP (left-hand circularly polarized)

① Horizontal plane (azimuth)

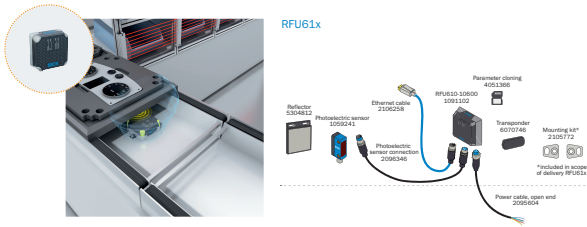
② Vertical plane (elevation)

Connection diagram

PROFINET IO/RT



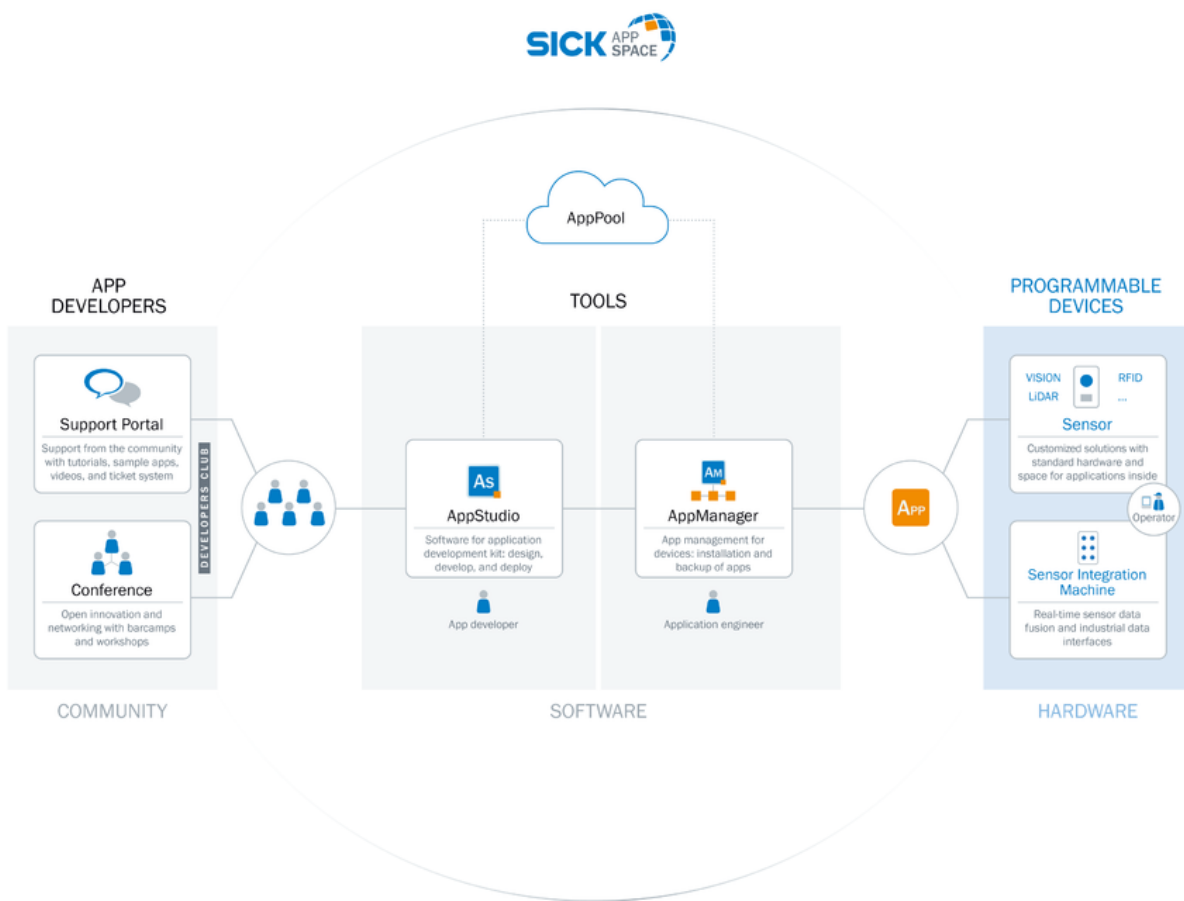
System construction



Monitoring of an assembly line, PCB production and pallet identification






Overview

SICK AppSpace



Recommended accessories

Other models and accessories → www.sick.com/RFU61x

| | Brief description | Type | Part no. |
|---|--|--------------------------------------|----------|
| Plug connectors and cables | | | |
|  | <ul style="list-style-type: none"> Connection type head A: Male connector, M12, 8-pin, straight, X-coded Connection type head B: Male connector, RJ45, 8-pin, straight Signal type: Ethernet, Gigabit Ethernet Cable: 2 m, 8-wire, PUR, halogen-free Description: Ethernet, Gigabit Ethernet, shielded Application: Zones with oils and lubricants | YM2X18-020EG1MRJA8 | 2106258 |
| Reflectors | | | |
|  | Rectangular, screw connection, 51 mm x 61 mm, PMMA/ABS, Screw-on, 2 hole mounting | P250 | 5304812 |
| Others | | | |
|  | <ul style="list-style-type: none"> Carrier frequency: 865 MHz ... 928 MHz Memory capacity (UII / user memory): 496/128 Bit Dimensions (L x W x H): 15 mm x 97 mm x 0.2 mm | UHF Transponder, paper label, global | 6070051 |
|  | <ul style="list-style-type: none"> Connection type head A: Female connector, M12, 4-pin, straight, A-coded Connection type head B: Flying leads Signal type: Sensor/actuator cable Cable: 2 m, 4-wire, PUR, halogen-free Description: Sensor/actuator cable, unshielded Application: Zones with oils and lubricants, Drag chain operation, Robot | YF2A14-020UB3XLEAX | 2095607 |
|  | <ul style="list-style-type: none"> Carrier frequency: 865 MHz ... 928 MHz Memory capacity (UII / user memory): 128/512 Bit Dimensions (L x W x H): 18 mm x 122 mm x 2 mm | UHF Transponder, rectangular, global | 6068184 |
| Photoelectric sensors | | | |
| | GL6-P4211 | GL6-P4211 | 1059241 |

Recommended services

Additional services → www.sick.com/RFU61x

| | Type | Part no. |
|---|-----------------------|----------|
| Commissioning | | |
| <ul style="list-style-type: none"> Product area: RFID Range of services: Inspection of connection, alignment, optimization of parameters of the RFU/RFH as well as tests, Setup of previously defined functions of reading configuration, data processing and network, interfaces and inputs and outputs Travel expenses: The prices do not include travel costs such as hotel, flight, travel time and expenses. Duration: Additional work will be invoiced separately | Commissioning RFU/RFH | 1610018 |
| Maintenance | | |
| <ul style="list-style-type: none"> Product area: RFID Range of services: Inspection, analysis and restoring of defined functions, Checking and adjustment of reading configuration, data processing, network, interfaces and inputs and outputs as well as operating data Duration: Additional work will be invoiced separately Travel expenses: The prices do not include travel costs such as hotel, flight, travel time and expenses. | Maintenance RFU/RFH | 1611424 |

| | Type | Part no. |
|--|--|----------|
| Extended warranty | | |
| <ul style="list-style-type: none">• Product area: Identification solutions, machine vision, Detection and ranging solutions, safety camera sensors, Safety laser scanners, Safety radar sensors• Range of services: The services correspond to the scope of the statutory manufacturer warranty (SICK general terms of delivery).• Duration: Five-year warranty from delivery date. | Extended warranty for a total of five years from delivery date | 1680671 |

SICK AT A GLANCE

SICK is one of the leading manufacturers of intelligent sensors and sensor solutions for industrial applications. A unique range of products and services creates the perfect basis for controlling processes securely and efficiently, protecting individuals from accidents and preventing damage to the environment.

We have extensive experience in a wide range of industries and understand their processes and requirements. With intelligent sensors, we can deliver exactly what our customers need. In application centers in Europe, Asia and North America, system solutions are tested and optimized in accordance with customer specifications. All this makes us a reliable supplier and development partner.

Comprehensive services complete our offering: SICK LifeTime Services provide support throughout the machine life cycle and ensure safety and productivity.

For us, that is “Sensor Intelligence.”

WORLDWIDE PRESENCE:

Contacts and other locations –www.sick.com