

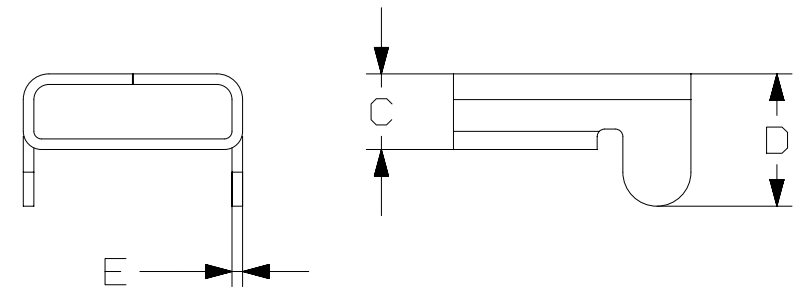
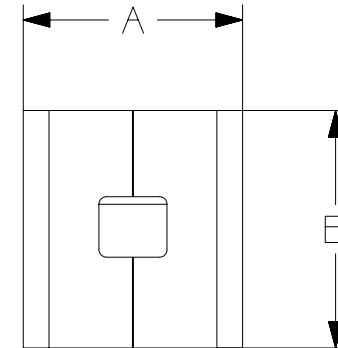
2

1

THIS COPY IS PROVIDED ON A RESTRICTED BASIS AND IS NOT TO BE USED IN ANY WAY DETRIMENTAL TO THE INTERESTS OF PANDUIT CORP.

NOTES:

1. MATERIAL: 316L STAINLESS STEEL
2. FOR USE WITH CORRESPONDING PANDUIT IMSXXXT35-QR6L UNCOATED OR IMSPXXXT35-QR6L\* COATED CUSTOM LENGTH STRAPPING, WHERE \* CAN BE COLOR CODE, I.E. B FOR BLUE.
3. DIMENSIONS ARE IN MM.
4. APPLICATION TOOL: PANDUIT BT75SDT.
5. PACKAGE QUANTITY: 100 PCS PER BAG.



PANDUIT PART NO.	A	B	C	D	E
IMSBL9.5-C6L	12.0	14.6	4.3	8.5	0.70
IMSBL12-C6L	14.5	16.1	4.5	9.9	0.70
IMSBL16-C6L	18.5	20.1	5.1	11.9	0.70

REV	DATE	BY	CHK	APR	DESCRIPTION	ECN
01	06/15/2016	JSUN	SKB	RGRO	DIMENSION CHANGES AND ADD COLOR CODE FOR IMSP STRIP	15L322BF_DC/01
00	9/15	JSUN	SKB	RGRO	DRAWING RELEASED	15L322BF_DC/00

TITLE		Drawing for L Type Buckles	
ITEM REVISION NAME		CUSTOMER DRAWING	
DATASET FILE NAME		15L322BF/01	<b>PANDUIT</b>
		15L322BF_DC/01	
UNLESS OTHERWISE SPECIFIED, DIMENSIONAL TOLERANCES ARE: MM		MATERIAL:	
.x ± .25		SEE NOTES	
.xx ± .13		DRAWING NUMBER:	
ANGLES ± 1 °		15L322BF_DC	
THIRD ANGLE PROJECTION		SHT 1 OF 1	
DRAWN BY	DATE	CHK	SCALE
			A4

2

1