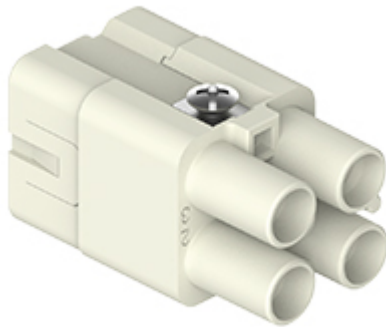



Part number

CQ4F 03/2



Female insert, CQ series, crimp connection, 3 + 2 poles + PE, 40 A 400 V 6 kV 3 / 10 A 250 V 4 kV 3, size "21.21"

Product description	
Product type	Insert
Series	CQ
Connection type	Crimp connection
Gender	Female
N. of poles	3 poles + 
Auxiliary poles	2 poles
Size	Size "21.21"
Technical data	
Current	40 A
Voltage	400 V
Rated impulse withstand voltage	6 kV
Pollution degree	3
Rated voltage according to UL/CSA	600 V
IP degree of protection	IP20 without enclosure, IP65/IP66/IP68/IP69 with enclosure
Further technical details	
Characteristics according to EN 61984	40 A 400 V 6 kV 3 / 10 A 250 V 4 kV 3
Mating cycles	≥ 500
Insulation resistance	≥ 10 GΩ
Contact resistance	≤ 0,3 mΩ (3 poles) / ≤ 3 mΩ (2 poles)
Weight	15,00 g
Operating temperature range (min, max)	-40 °C ... +125 °C
UL 94 flammability rating	V-0

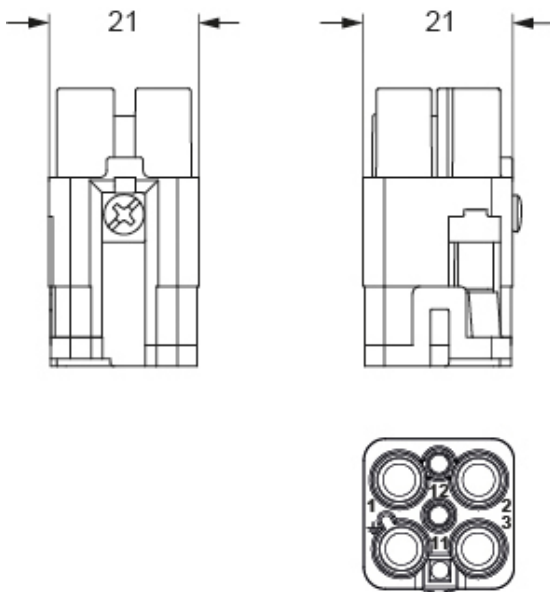
Material properties	
Main material	Polycarbonate (PC)
Colour	RAL 7032 grey
RoHs conformity	Compliant
Approvals / Standards	
Certifications	DNV, BV, EAC
UL	ECBT2, PVVA2
cUL	ECBT8, PVVA8
General ordering information	
EAN13 code	8015747269506
eCl@ss 8.1	27440205
ETIM 7.0	EC000438
Packaging Information	
Packaging length	200,00 mm
Packaging height	245,00 mm
Packaging width	146,00 mm
Packaging weight	3,20 kg
Packaging volume	7,15 dm ³
Packaging description	Carton box
Packaging quantity	200 Pcs
Packaging EAN code	8015747269537
Sub-packaging length	116,00 mm
Sub-packaging height	43,00 mm
Sub-packaging width	180,00 mm
Sub-packaging weight	0,64 kg
Sub-packaging volume	0,90 dm ³
Sub-packaging description	Carton tray
Sub-packaging quantity	40 Pcs
Sub-packaging EAN barcode	8015747269544

Part number

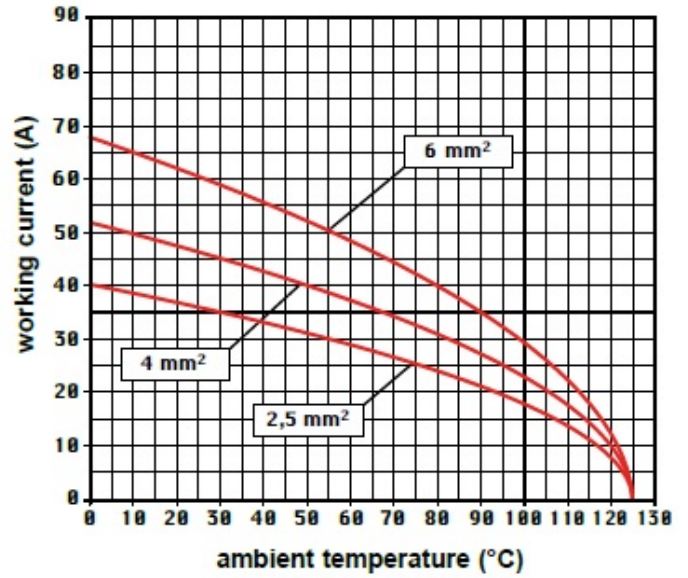
CQ4F 03/2



Catalogue drawings



Derating curves



Notes

Dimensions shown in mm are not binding and may be changed without notice.