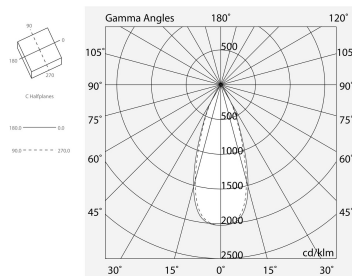
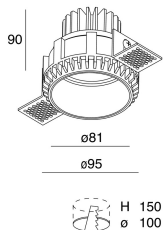
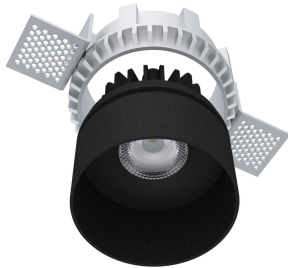


# WELL/MINI WELL

101902.02

**novalux**  
ITALIAN LIGHTING DESIGN SINCE 1948



## Features

Use: Indoor  
Type of installation: RECESSED INTO PLASTERBOARD  
Emission: DIRECT  
Optics: SPOT  
Beam: 36°  
Colour: BLACK  
Dimming: WITH ACCESSORY  
Emergency: WITH ACCESSORY  
A: Ø95mm  
H: 90mm  
D: 100 mm  
Warranty: 5 years  
Weight: 0.44kg

## Tech data

Luminaire luminous flux: 797lm  
Luminous flux in emergency: 1h: 44% / 3h: 18%  
IP: 54  
Insulation class: III  
Supply voltage: DC 500 mA  
UGR: <19  
SELV: No

## Source

Light source: LED  
Source power: 10W  
Source luminous flux: 1010lm  
Colour temperature: 4000K  
CRI: >90  
LED lifespan: 30000h L70 B20

## Compliance

CEI EN 60598-1:2015 + A11:2009. IEC 60598-2:2015 2-1, 2-2

## Standards

Photobiological risk: RISK GROUP 1 Certified fixture in RISK GROUP 1 (Low Risk)-The fixture does not pose a hazard due to normal behavioral limitations on exposure - in accordance with CEI EN 62471:2010-01, IEC TR 62778:2014.

CAM edilizia: The product complies with the requirements for public buildings, ministerial decree of 23rd June 2022 n.256.

[View more product info](#)

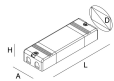


Novalux S.r.l. via Marzabotto, 2 40050 Funo di Argelato (BO) Italy  
Tel: +39 051 860558 · Fax +39 051 6647859 · Mail: info@novalux.it · VAT number 00536541204 · novalux.com  
Company subject to the management and coordination by SLV GmbH

This technical data sheet is owned by Novalux S.r.l., all rights reserved. Novalux S.r.l. reserves the right to make changes without prior notice.

## ELECTRICAL ACCESSORIES

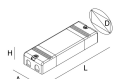
---



ALIM. LED MAX 18W 500MA

**101325.99**

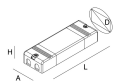
---



ALIM. LED 15W/500MA

**101307.99**

---

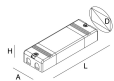


ALIM. LED 14W 500MA/2-27V

**101331.99**

## DIMMABLE ACCESSORIES

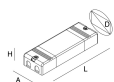
---



ALIM. MAX.20W/500MA DALI/PUSH/0-10/1-10

**101904.99**

---

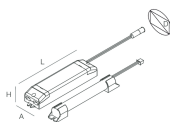


ALIM. LED 25W 500MA/2-50V DALI/PUSH

**101334.99**

## EMERGENCY ACCESSORIES

---



KIT EMERGENZA 3H 10V-54V

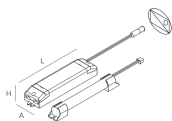
**18005.99**

---

# WELL/MINI WELL

101902.02

**novalux**  
ITALIAN LIGHTING DESIGN SINCE 1948



KIT EMERGENZA 1H 10V-54V

**18004.99**



Novalux S.r.l. via Marzabotto, 2 40050 Funo di Argelato (BO) Italy  
Tel: +39 051 860558 · Fax +39 051 6647859 · Mail: [info@novalux.it](mailto:info@novalux.it) · VAT number 00536541204 · [novalux.com](http://novalux.com)  
Company subject to the management and coordination by SLV GmbH

This technical data sheet is owned by Novalux S.r.l., all rights reserved. Novalux S.r.l. reserves the right to make changes without prior notice.