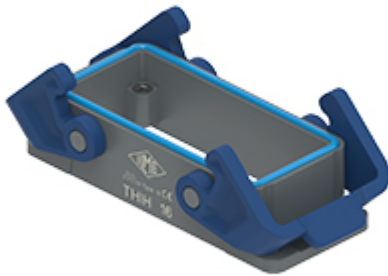


Part number
THIC 16



Bulkhead mounting housing, T-TYPE/C series,
with 2 levers, size "77.27"

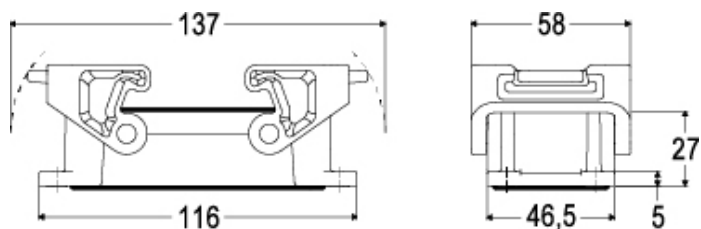
Product description		Material properties	
Product type	Bulkhead mounting housing	Main material	Polypropylene (PP)
Series	T-TYPE/C	Other materials	Lever: Polypropylene (PP) Gasket: Silicone rubber
Closing type	With 2 levers	Colour	RAL 7012 grey, RAL 5005 blue
Size	Size 77.27	RoHs conformity	Compliant
Cable entry	Without cable entry	China RoHs - EFUP	E
Technical data		REACH SVHC substances	No
IP degree of protection	IP66 / IP69	General ordering information	
Further technical details		EAN13 code	8015747211413
Weight	86,00 g	eCl@ss 8.1	27440202
Operating temperature range (min, max)	-50°C ... +70°C	ETIM 7.0	EC000437
		Packaging Information	
		Packaging length	360,00 mm
		Packaging height	165,00 mm
		Packaging width	315,00 mm
		Packaging weight	3,47 kg
		Packaging volume	18,71 dm ³
		Packaging description	Carton box
		Packaging quantity	40 Pcs
		Packaging EAN code	8015747211475
		Sub-packaging weight	0,43 kg
		Sub-packaging description	Plastic packaging
		Sub-packaging quantity	5 Pcs
		Sub-packaging EAN barcode	8015747211482

Part number

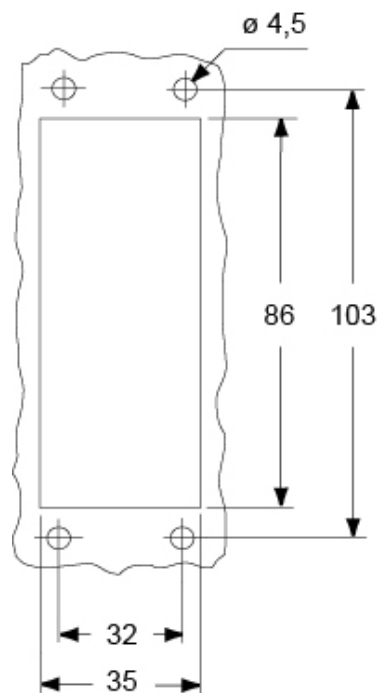
THIC 16



Catalogue drawings



Catalogue drawings



Notes

Dimensions shown in mm are not binding and may be changed without notice.