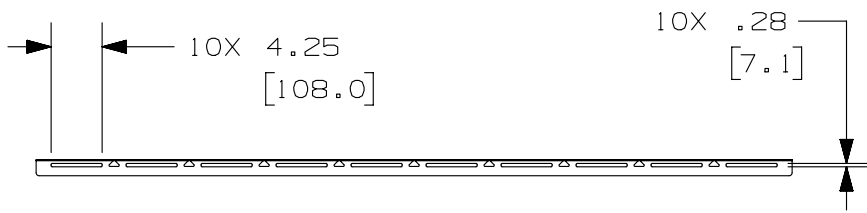


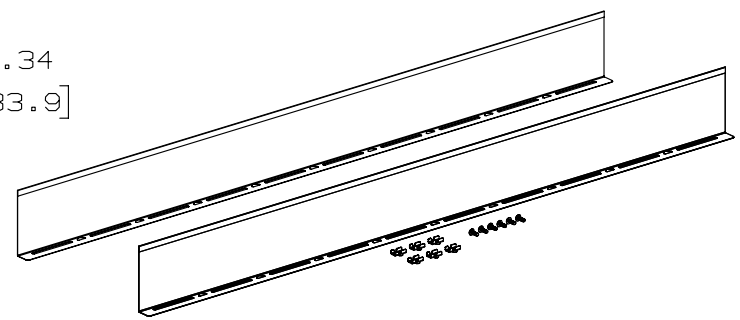
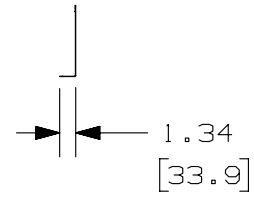
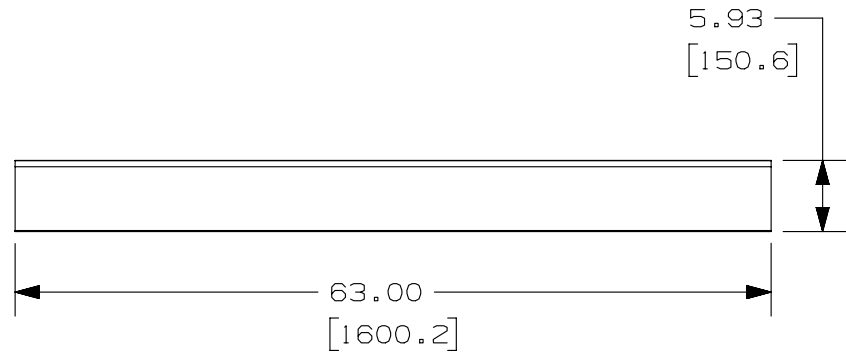
THIS COPY IS PROVIDED ON A RESTRICTED BASIS AND IS NOT TO BE USED IN ANY WAY DETRIMENTAL TO THE INTERESTS OF PANDUIT CORP.

PANDUIT PART NUMBER	WEIGHT
WGDW6**	8.25 LBS (3742.1 g)



NOTES:

- PANDUIT PART NUMBER WGDW6** INCLUDES:
 - TWO [2] 6" X 63" LONG WYR-GRID NOTCHED DIVIDER WALL
 - SIX [6] WYR-GRID TRUSS BOLT ASSEMBLIES
 - SIX [6] 1/4-20 X 3/4" LONG PHILLIPS TRUSS HEAD SCREWS
- DIMENSIONS IN PARENTHESES ARE METRIC.
- SEE CATALOG FOR ADDITIONAL PART SUFFIXES TO INDICATE PART FINISH AND/OR PACKAGE QUANTITY.



R	08-27-13	SSP	DWR	RN	RELEASED TO PRODUCTION				11D238CV-DC
REV	DATE	BY	CHK	APR	DESCRIPTION				ECN

TITLE		6" X 63" LONG WYR-GRID NOTCHED DIVIDER WALL (WGDW6**)	
CUSTOMER DRAWING			
ITEM REVISION NAME		11D238CV/00	
DATASET FILE NAME		11D238CV-DC/00A WGDW6**	
UNLESS OTHERWISE SPECIFIED, DIMENSIONAL TOLERANCES ARE: IN [mm]		MATERIAL:	
.X ± .XX ± .5 [1.3]		STEEL	
.XXX ± ANGES ± 5 °		DRAWING NUMBER:	
THIRD ANGLE PROJECTION		11D238CV-DC	
DRAWN BY	DATE	CHK	SCALE
SSP	08-27-13	DWR	NONE
SHT 1 OF 1			SIZE
			A