

Luminaire Protection Device – Type 2 and 3

For electronic devices

These protective components are fitted with an LED indicator. Once the end of the component's life has been reached, the green LED goes out and the protective component has to be replaced. If the protective luminaire component overloads, the connected lighting circuit will be interrupted.

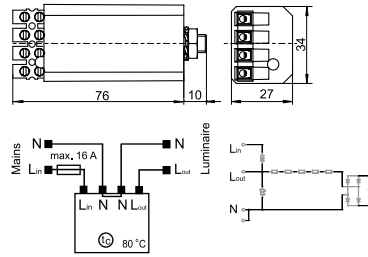
This cut-out function makes it easier to detect the end of life of the protective component, facilitates quick replacement by maintenance staff and provides reliable protection for lighting components.
 Dimensions (LxWxH): 76x34x27 mm
 Weight: 100 g, with integrated thermal fuse
 DEKRA approved acc. to EN 61643-11

AC system: TT-TN-IT
 Temporary overvoltage
 • (TOV)-LV: 443 V AC (5 sec.) / 443 V (120 min.)
 • (TOV)-MV/HV: 1200 V AC (200 msec.)
 I_{scr}: 4500 A



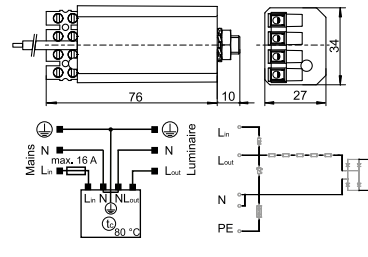
SPC 230/10 K/i

Suitable for luminaires of protection class II
 Screw terminals: 0.75–2.5 mm²
 Degree of protection: IP20
Ref. No.: 142737



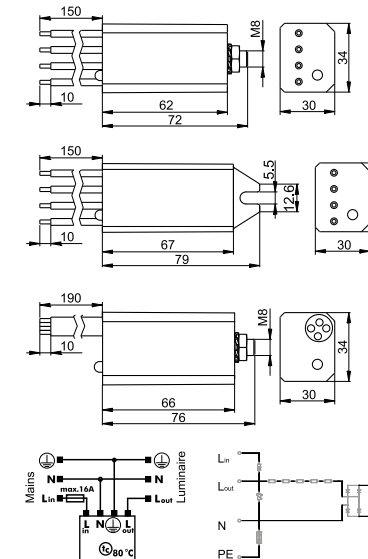
SPC 3/230/10 K/i

Suitable for luminaires of protection class I
 Screw terminals: 0.75–2.5 mm²
 Lead ground terminal: stranded conductors, 2.5 mm², silicone insulation, length: 150 mm
 Degree of protection: IP20
Ref. No.: 142738
 Earthing wire with M4 ring-tongue
Ref. No.: 142742



SPC 3/230/10 K/i-IP66

4 leads: stranded conductors, 2.5 mm², silicone insulation, length: 150 mm
 Degree of protection: IP66
Ref. No.: 142748
Ref. No.: 142746 casing with fixing lug (no KEMA approval)
Ref. No.: 142747 with isolated cable with outer diameter approx. 12 mm (no KEMA approval)



Type	Ref. No.	Voltage 50/60 Hz V ±10 %	Max. load current (A)	Protection level		I _{pe} µA	Max. impulse voltage U _{oc} (V)	Discharge current* (8/20 µs)		Safety max. A	Max. permitted casing temp. °C	Fixation
				L-N (V)	L-PE (V)			I _N (A)	I _{max} (A)			
SPC 230/10 K/i	142737	100–277	16	< 1500	–	–	10000	5000	10000	16	–35 to 80	M8x10
SPC 3/230/10 K/i	142738	100–277	16	< 1500	< 1800	1	10000	5000	10000	16	–35 to 80	M8x10
SPC 3/230/10 K/i	142742	100–277	16	< 1500	< 1800	1	10000	5000	10000	16	–35 to 80	M8x10
SPC 3/230/10 K/i/IP66	142748	100–277	16	< 1500	< 1800	1	10000	5000	10000	16	–35 to 80	M8x10
SPC 3/230/10 K/i/IP66	142746	100–277	16	< 1500	< 1800	1	10000	5000	10000	16	–35 to 80	lug
SPC 3/230/10 K/i/IP66	142747	100–277	16	< 1500	< 1800	1	10000	5000	10000	16	–35 to 80	M8x10

* Discharge current: at 5000 A min. 1.5 strikes; at 10,000 A min. 1 strike

The values contained in this data sheet can change due to technical innovations. Any such changes will be made without separate notification.

