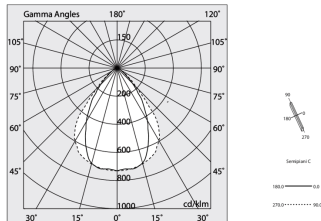
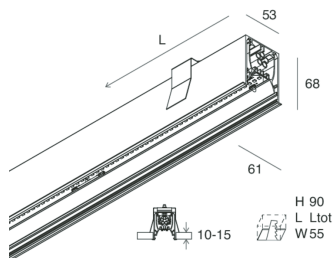
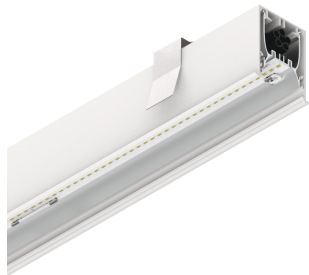


# HERO C

108868.01 + 108912.99

**novalux**  
ITALIAN LIGHTING DESIGN SINCE 1948



## Features

Use: Indoor  
Type of installation: RECESSED INTO PLASTERBOARD  
Emission: DIRECT  
Optics: MICROPRISMATIZED  
Colour: WHITE  
Dimming: PUSH, DALI  
Emergency: Autonomy 1h/Recharge time 12h  
L: 1680mm  
A: 61mm  
H: 68mm  
Made in: ITALY  
Warranty: 5 years except battery

## Tech data

Luminaire input power: 40.5W  
Luminaire luminous flux: 3196lm  
Luminous flux in emergency: 10%  
IP: 40  
Insulation class: I  
Supply voltage: 220-240V 50/60Hz  
UGR: <19  
SELV: Si

## Source

Light source: LED  
Source power: 36W  
Colour temperature: 3000K  
CRI: >90  
Colour tolerance: 3 Step MacAdam  
LED lifespan: 50000h

## Compliance

CEI EN 60598-1:2021 + A11:2023, CEI EN 60598-2-1:2022, CEI EN 60598-2-2:2012, CEI EN 60598-2-22:2023

## Standards

Photobiological risk: RISK GROUP 0 Certified fixture in EXEMPT GROUP, in accordance with CEI EN 62471:2010-01, IEC TR 62778:2014.  
CAM edilizia: The product complies with the requirements for public buildings, ministerial decree of 23rd June 2022 n.256.

## Average luminance

Average luminance limits for DSE workstation 65°(in accordance to EN 12464-1:2012).

[View more product info](#)



Novalux S.r.l. via Marzabotto, 2 40050 Funo di Argelato (BO) Italy  
Tel: +39 051 860558 · Fax +39 051 6647859 · Mail: info@novalux.it · VAT number 00536541204 · novalux.com  
Company subject to the management and coordination by SLV GmbH


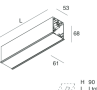
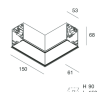
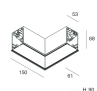
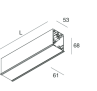
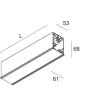
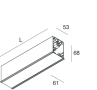
This technical data sheet is owned by Novalux S.r.l., all rights reserved. Novalux S.r.l. reserves the right to make changes without prior notice.  
Last update: 21/3/2024, 16:51:39

# HERO C

108868.01 + 108912.99

**novalux**  
ITALIAN LIGHTING DESIGN SINCE 1948

## COMPLETION ACCESSORIES

	HERO C: COPPIA TESTATE BIA	108860.01
	HERO C: MOD.CIECO 250 BIA	108852.01
	HERO C: MOD.CIECO ANG.DX 150 BIA	108854.01
	HERO C: MOD.CIECO ANG.SX 150 BIA	108853.01
	HERO C: MOD.CIECO 1120 BIA	108855.01
	HERO C: MOD.CIECO 1680 BIA	108857.01
	HERO C: MOD.CIECO 1400 BIA	108856.01



Novalux S.r.l. via Marzabotto, 2 40050 Funo di Argelato (BO) Italy  
Tel: +39 051 860558 · Fax +39 051 6647859 · Mail: info@novalux.it · VAT number 00536541204 · novalux.com  
Company subject to the management and coordination by SLV GmbH

This technical data sheet is owned by Novalux S.r.l., all rights reserved. Novalux S.r.l. reserves the right to make changes without prior notice.  
Last update: 21/3/2024, 16:51:39