

### PanView iQ™ Patch Panels

PanView iQ™ Patch Panels revolutionize intelligent physical infrastructure management by providing a modular and scalable approach to meet the demands of enterprise and data center installations. Standard copper and fiber cabling is used for all terminations onto the back of these panels while unique PanView iQ™ Patch Cords are used for cross-connect or interconnect installations.

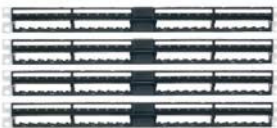
- Mount to standard EIA 19" rack or 23" racks with optional extender bracket
- Accommodates intelligent modules that mount in the rear and utilize no additional rack space (zero RU)
- Accepts all Mini-Com® UTP and STP Modules
- Accepts a PanView iQ™ Interface Unit to provide patch cord tracing and provisioning of switch ports with PanView iQ™ Interconnect Patch Cords or patch field mapping with PanView iQ™ Cross-Connect Patch Cords



PVQ-MIQAPU24



PVQ-MIQPU24



PVQ-MIQPS96F



PVQ-MIQPS96A

Part Number	Part Description	No. of Rack Spaces <sup>^</sup>	Std. Pkg. Qty.	Std. Ctn. Qty.
<b>Angled PanView iQ™ Patch Panels</b>				
PVQ-MIQAPU24	24-port unpopulated angled UTP modular intelligent module-ready patch panel. Accepts all Mini-Com® UTP and LC Fiber Optic Modules.	1	1	10
PVQ-MIQAPS24	24-port unpopulated angled STP modular intelligent module ready patch panel. Accepts all Mini-Com® STP Modules.	1	1	10
<b>Flat PanView iQ™ Patch Panels</b>				
PVQ-MIQPU24	24-port unpopulated UTP modular intelligent module ready patch panel.	1	1	10
PVQ-MIQPS24	24-port unpopulated STP modular intelligent module ready patch panel.	1	1	10
<b>PanView iQ™ Hardware Kits</b>				
PVQ-MIQPS96F	For standard configurations, this 96-port modular intelligent panel kit includes four flat PanView iQ™ Patch Panels (PVQ-MIQPU24), one PanView iQ™ Panel Manager with interface unit, and three PanView iQ™ Expansion Modules with expansion port cables and interface units. Also includes one 1.5' (0.5m) RJ45 patch cord for connection to network switch or additional daisy-chained PanView iQ™ Panel Managers. (Power supply, PanView iQ™ Patch Cords and Mini-Com® Jack Modules are not included and must be purchased separately.)	4	1	—
PVQ-MIQPS96A	For standard configurations, this 96-port modular intelligent panel kit includes four angled PanView iQ™ Patch Panels (PVQ-MIQAPU24), one PanView iQ™ Panel Manager with interface unit, and three PanView iQ™ Expansion Modules with expansion port cables and interface units. Also includes one 1.5' (0.5m) RJ45 patch cord for connection to network switch or additional daisy-chained PanView iQ™ Panel Managers. (Power supply, PanView iQ™ Patch Cords and Mini-Com® Jack Modules are not included and must be purchased separately.)	4	1	—

<sup>^</sup>One rack space = 1.75" (44.45mm).

PanView iQ™ Panel Manager requires proper country-specific power supply (PVQ-PS12VDC-S for North America, PVQ-PS12VDC-E for Europe, PVQ-PS12VDC-J for Japan, or PVQ-PS12VDC-U for United Kingdom) which must be ordered separately, found on page I.9 of SA-NCCB51.