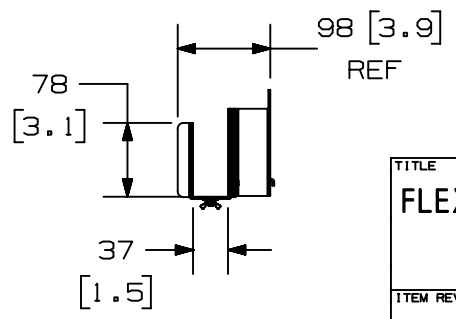
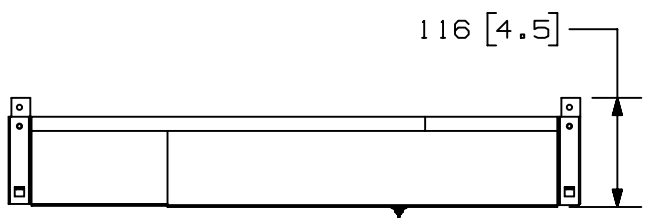
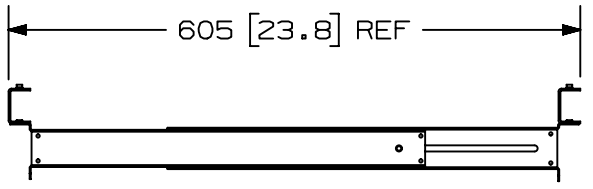
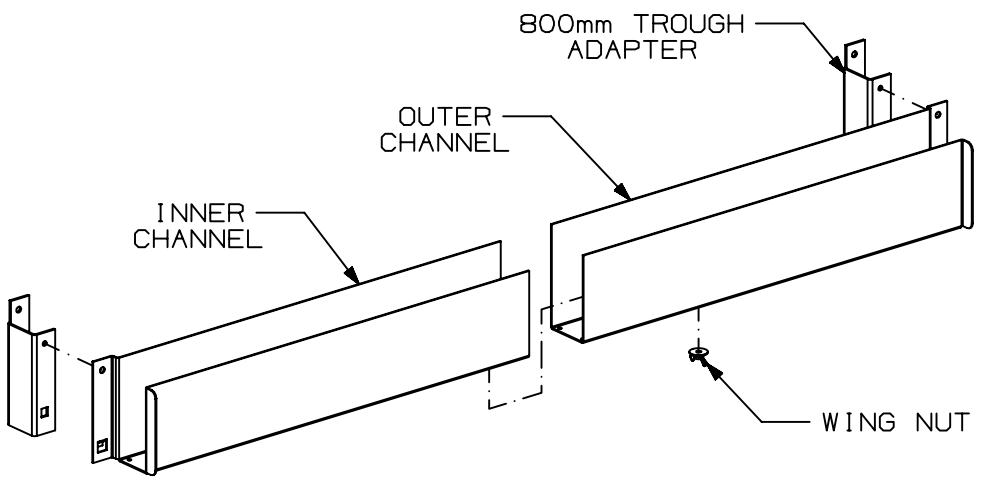


THIS COPY IS PROVIDED ON A RESTRICTED BASIS AND IS NOT TO BE USED IN ANY WAY DETRIMENTAL TO THE INTERESTS OF PANDUIT CORP.

NOTES:

1. VISIT OUR ON-LINE CATALOG AT [WWW.PANDUIT.COM](http://WWW.PANDUIT.COM) FOR A LIST OF CURRENT PARTS APPLICABLE FOR USE WITH THIS PRODUCT.
2. PRIMARY DIMENSIONS ARE IN MILLIMETERS.
3. PARTS SUPPLIED:
  - (1) INNER CHANNEL
  - (1) OUTER CHANNEL
  - (2) 800mm TROUGH ADAPTER
  - (1) WING NUT
  - (4) M5 x 10mm BONDING SCREW (NOT SHOWN)
  - (1) INSTALLATION INSTRUCTIONS (NOT SHOWN)



PANDUIT PART NO.	WEIGHT
XG-FTB*	1.95 Kg/EACH 4.3 LBS/EACH

\* DENOTES COLOR  
ADD SUFFIX "B" FOR BLACK  
AND "W" FOR WHITE.

TITLE		FLEXFUSION FRONT TO BACK CABLE TROUGHS, 700-800 (XG-FTBB & XG-FTBW)	
ITEM REVISION NAME		00463NFZ/00	
DATASET FILE NAME		00463NFZ_DC/00A	
CUSTOMER DRAWING		<b>PANDUIT</b>	
MATERIAL:			
DRAWING NUMBER:		00463NFZ_DC	
THIRD ANGLE PROJECTION			
DRAWN BY	DATE	CHK	SCALE
MEX-JAGC	2/17/21	BRAP	NONE
REV	DATE	BY	CHK
00A	2/17/21	MEX-JAGC	BRAP
DESCRIPTION		DRAWING RELEASE	
ECN		V09002EX/00	
SHT 1 OF 1		A	

ANGLOBAL-ASIZE