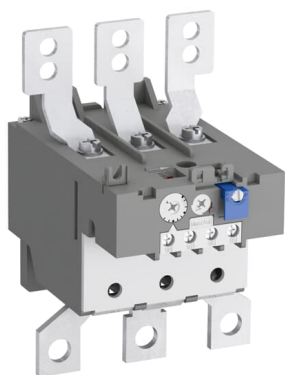


PRODUCT-DETAILS

TA200DU-175

TA200DU-175 Thermal Overload Relay 130 ... 175 A



Informations générales

| | |
|------------------------------|--|
| Extension du type de produit | TA200DU-175 |
| Code de produit | 1SAZ421201R1005 |
| EAN | 4013614286056 |
| Description courte | TA200DU-175 Thermal Overload Relay 130 ... 175 A |
| Description longue | The TA200DU-175 thermal overload relay is an economic electromechanical protection device for the main circuit. It offers reliable and fast protection for motors in the event of overload or phase failure. The device has trip class 10A. Further features are the temperature compensation, trip contact (NC), signal contact (NO), automatic- or manual reset selectable, trip-free mechanism, STOP- and Test function and a trip indication. The overload relays are connected directly to the block contactors. Single mounting kits are available as accessory. |

Commande

| | |
|------------------|----------|
| Quantité minimum | 1 pièce |
| Code douanier | 85364900 |

Downloads Préférés

| | |
|--|-----------------|
| Fiche produit, informations techniques | 1SBC100214C0202 |
| Instructions et manuels | 2CDC106028M6802 |
| Instructions et manuels (Partie 2) | 1SAC200017M0002 |

| | |
|--------------------------------------|-----------------|
| Time-Current Characteristic Curve | 1SAZ400502F0005 |
| CAD Dimensional Drawing | 2CDC001079B0201 |
| Schéma dimensionnel | 1SAZ400401F0001 |

Dimensions

| | |
|----------------------|---------|
| Produit Largeur Net | 104 mm |
| Produit Hauteur Net | 151 mm |
| Produit Longueur Net | 126 mm |
| Poids net | 0.77 kg |

Technique

| | |
|--|--|
| Setting Range | 130 ... 175 A |
| Tension | Circuit auxiliaire 440 V DC Circuit auxiliaire 500 V AC Circuit principal 690 V AC Circuit principal 440 V DC |
| Courant nominal de fonctionnement (I_e) | 175 A |
| Fréquence assignée (f) | Circuit auxiliaire 50 Hz Circuit auxiliaire 60 Hz Circuit auxiliaire DC Circuit principal 60 Hz Circuit principal 50 Hz Circuit principal DC |
| Tension assignée de tenue aux chocs (U_{imp}) | Circuit auxiliaire 6 kV Circuit principal 6 kV |
| Tension assignée d'isolement (U_i) | 690 V |
| Nombre de pôles | 3 |
| Number of Auxiliary Contacts NC | 1 |
| Number of Auxiliary Contacts NO | 1 |
| Number of Protected Poles | 3 |
| Courant thermique conventionnel à l'air libre (I_{th}) | Auxiliary Circuit NC 5 A Auxiliary Circuit NO 5 A |
| Courant assignée d'emploi AC-15 (I_e) | (120 V) NC 3 A (120 V) NO 1.5 A (240 V) NC 3 A (240 V) NO 1.5 A (400 V) NC 1.9 A (400 V) NO 1 A (440 V) NC 1 A (440 V) NO 1 A (500 V) NC 1 A (500 V) NO 1 A |
| Courant assignée d'emploi DC-13 (I_e) | (125 V) NC 0.25 A (125 V) NO 0.25 A (24 V) NC 1.25 A (24 V) NO 1.25 A (250 V) NC 0.12 A (250 V) NO 0.04 A (60 V) NC 0.25 A (60 V) NO 0.25 A |
| Indice de protection | Housing IP20 Main Circuit Terminals IP00 |
| Degré de pollution | 3 |

| | |
|---------------------------------------|--|
| Connecting Capacity Auxiliary Circuit | Flexible with Ferrule 1/2x 0.75 ... 2.5 mm ² Flexible 1/2x 0.75 ... 2.5 mm ² Rigid 1/2x 0.75 ... 4 mm ² |
| Connecting Capacity Main Circuit | Hole Diameter > 10 mm ² Rigid or Flexible with Cable Lug 1x 25 ... 120 mm ² |
| Couple de serrage | Auxiliary Circuit 1 ... 1.3 N·m Main Circuit 25 N·m |
| Wire Stripping Length | Auxiliary Circuit 9 mm |
| Recommended Screw Driver | Circuit auxiliaire Pozidriv 1 Circuit principal Open Bars |
| Type d'encastrement | 1 ... 6 |
| Power Loss | at Rated Operating Conditions per Pole 3.8 ... 6.9 W |
| Adapté pour | A145 A185 AF145 AF185 AF190 AF205 |
| Normes et standards | IEC/EN 60947-1 IEC/EN 60947-4-1 IEC/EN 60947-5-1 UL 60947-1 UL 60947-4-1 |

Technique UL/CSA

| | |
|--|--|
| Maximum Operating Voltage UL/CSA | Circuit principal 600 V AC |
| Contact Rating UL/CSA | (NC:) B600 (NO:) C600 |
| Connecting Capacity Main Circuit UL/CSA | Flexible 1x 4-0000 AWG Stranded 1x 4-0000 AWG |
| Connecting Capacity Auxiliary Circuit UL/CSA | Flexible 1/2x 18-14 AWG Stranded 1/2x 18-14 AWG |
| Tightening Torque UL/CSA | Auxiliary Circuit 12 in·lb Main Circuit 220 in·lb |

Environnement

| | |
|---|--|
| Température de l'air ambiant | Operation -25 ... +55 °C Operation Compensated -25 ... +55 °C Storage -40 ... +70 °C |
| Ambient Air Temperature Compensation | Oui |
| Altitude de fonctionnement maximale autorisée | 2000 m |
| Résistance aux chocs selon CEI 60068-2-27 | 11 ms Pulse 12g |
| Statut RoHS | Following EU Directive 2011/65/EU and Amendment 2015/863 July 22, 2019 |

Certificats et Déclarations (Numéro de document)

| | |
|---------------------------------|---------------------|
| Certificat ABS | 1SAA941000-0102 |
| Certificat BV | 1SAA941000-0201 |
| CB Certificate | 1SAA941004-2003 |
| CQC Certificate | CQC2016010309922936 |
| Declaration of Conformity - CCC | 2020980304001321 |
| Déclaration de Conformité - CE | 1SAD101100-3509 |

| | |
|-------------------------------------|-----------------|
| Declaration of Conformity - UKCA | 1SAD201100-3509 |
| Certificat DNV | 1SAA941000-0304 |
| DNV GL Certificate | 1SAA941000-0304 |
| EAC Certificate | 1SAA941002-2702 |
| Certificat GL | 1SAA941000-0304 |
| Certificat LR | 1SAA941000-0504 |
| Certificat RMRS | 1SAA941000-0704 |
| Certificat UL | E48139-19910930 |

Emballage

| | |
|--------------------------------|---------------|
| Emballage Niveau 1 Unités | 1 pièce |
| Emballage Niveau 1 Largeur | 165 mm |
| Emballage Niveau 1 Hauteur | 133 mm |
| Emballage Niveau 1 Longueur | 151 mm |
| Emballage Niveau 1 Poids | 1.02 kg |
| Emballage Niveau 1 EAN | 4013614286056 |
| Emballage Niveau 2 Unités | 4 pièce |
| Emballage Niveau 2 Largeur | 280 mm |
| Emballage Niveau 2 Hauteur | 210 mm |
| Emballage Niveau 2 Longueur | 395 mm |
| Emballage Niveau 2 Poids | 8.786 kg |
| Emballage Niveau 2 EAN | 4013614494277 |

Classifications

| | |
|---|--|
| Code de classification d'objet | F |
| ETIM 4 | EC000106 - Thermal overload relay |
| ETIM 5 | EC000106 - Thermal overload relay |
| ETIM 6 | EC000106 - relais de surcharge thermique |
| ETIM 7 | EC000106 - Thermal overload relay |
| ETIM 8 | EC000106 - Thermal overload relay |
| eClass | V11.0 : 27371501 |
| UNSPSC | 39122330 |
| Code de catégorie granulaire IDEA (IGCC) | 5366 >> Thermal overload relay |
| E-Number (Finland) | 3709361 |
| E-Number (Sweden) | 3228708 |

Accessories

| Identifiant | Description | Type | Quantity | Unit Of Measure |
|-----------------|-----------------------------|-----------|----------|-----------------|
| 1SAZ401110R0001 | DB200 Single Mounting Kit | DB200 | 1 | piece |
| 1SAZ401901R1001 | LT200/A Terminal Shroud | LT200/A | 1 | piece |
| 1SFA616162R1014 | KPR3-101L Reset push button | KPR3-101L | 1 | piece |

Catégories

Produits basse tension → Produits de Contrôle, Protection et sécurité machines → Contacteurs → Relais de protection contre les surcharges

