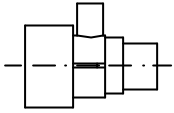
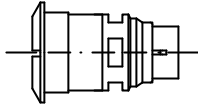
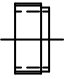

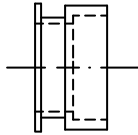
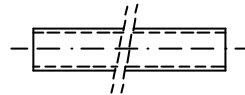


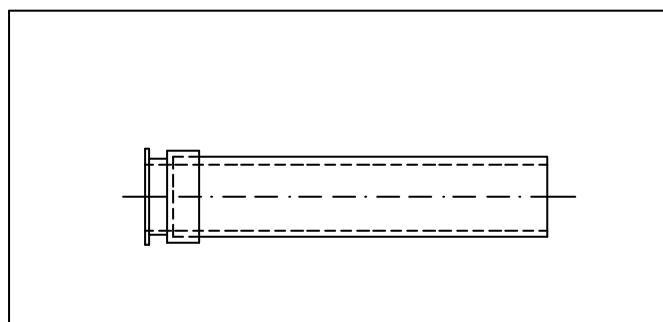
INSTALLATION

WALL CONDUIT 2 1/2" FOR ROTATING JET

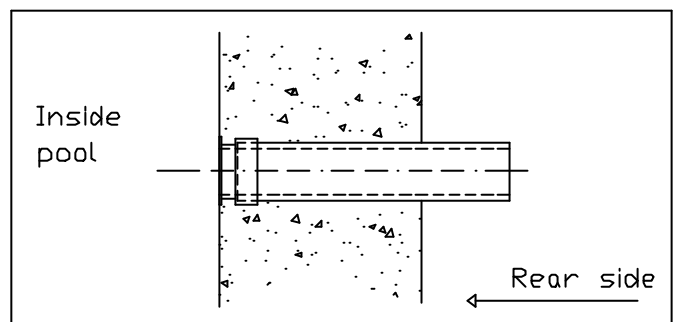
	DESCRIPTION/CODE		DESCRIPTION/CODE
	JET BODY		FRONTAL BODY
	20295-003		20295-002
	THREADED BUSH		WALL CONDUIT * Ø 75mm x 200mm L.
	20295-004		PN6 02693
	NICHE		WALL-CONDUIT ** Ø 32mm x 180mm L.
	20295-001		PN10 02707

* Ø75mm x 200mm. pipe is supplied

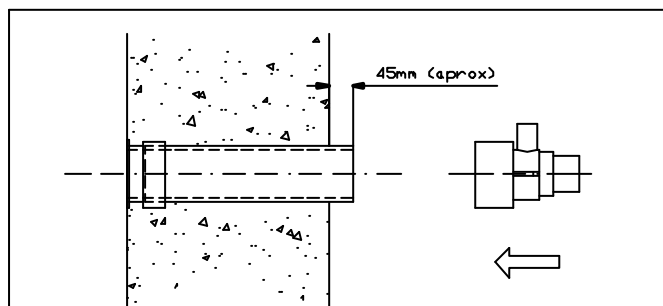
** Ø32mm x 180mm. pipe is supplied



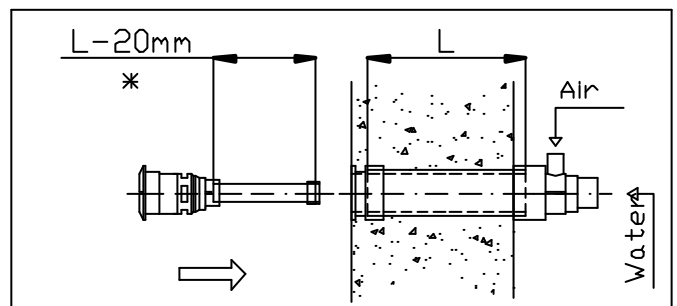
1. Glue the end Niche to Ø75 pipe



2. Situate the glued parts in place for concreting the pool wall



3. Cut the surplus pipe end and glue the jet body on the rear side of the pool



4. On each internal pipe end (Ø32), glue threaded bush and frontal body. Insert assembly and thread it to jet body

Once the wall conduit is assembled, fit the required jet