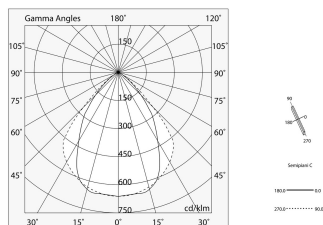
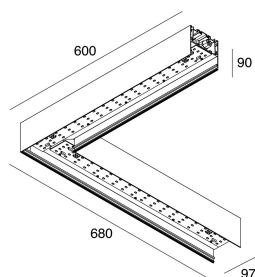
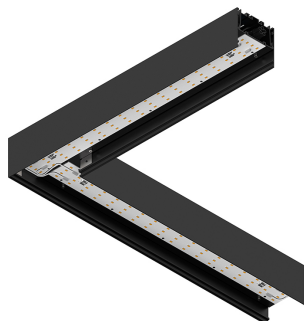


LUCKY MAXI

106217.02 + 106228.99

novalux

ITALIAN LIGHTING DESIGN SINCE 1948



Features

Use: Indoor
Type of installation: SUSPENDED, CEILING MOUNTED
Emission: DIRECT
Optics: MICROPRISMATIZED
Colour: BLACK
Dimming: PUSH, DALI
Emergency: NO
L: 600x680mm
A: 97mm
H: 90mm
Made in: ITALY
Warranty: 5 years
Weight: 4.8kg

Tech data

Luminaire input power: 42W
Luminaire luminous flux: 2952lm
IP: 40
Insulation class: I
Supply voltage: 220-240V 50/60Hz
UGR: <19
SELV: Si

Source

Light source: LED
Source power: 36W
Source luminous flux: 4786lm
Colour temperature: 3000K
CRI: >90
Colour tolerance: 3 Step MacAdam
LED lifespan: 50000h L80 B20

Compliance

CEI EN 60598-1:2015 + A11:2009. IEC 60598-2:2015 2-1

Standards

Photobiological risk: RISK GROUP 0 Certified fixture in EXEMPT GROUP, in accordance with CEI EN 62471:2010-01, IEC TR 62778:2014.

CAM edilizia: The product complies with the requirements for public buildings, ministerial decree of 23rd June 2022 n.256.

[View more product info](#)



Novalux S.r.l. via Marzabotto, 2 40050 Funo di Argelato (BO) Italy
Tel: +39 051 860558 · Fax +39 051 6647859 · Mail: info@novalux.it · VAT number 00536541204 · novalux.com
Company subject to the management and coordination by SLV GmbH

This technical data sheet is owned by Novalux S.r.l., all rights reserved. Novalux S.r.l. reserves the right to make changes without prior notice.

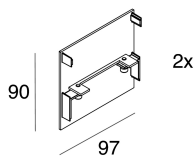
LUCKY MAXI

106217.02 + 106228.99

novalux

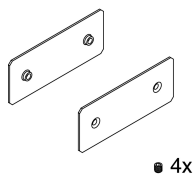
ITALIAN LIGHTING DESIGN SINCE 1948

COMPLETION ACCESSORIES



LUCKY MAXI: TESTATE NERE (COPPIA)

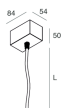
106230.02



LUCKY MAXI: KIT DI GIUNZIONE

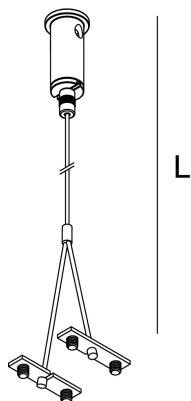
106231.99

MOUNTING ACCESSORIES



KIT ALIMENTAZIONE L3000 5P NE

108922.02



LUCKY MAXI: KIT SOSPENSIONE 3000 (1 PZ)

106229.99



Novalux S.r.l. via Marzabotto, 2 40050 Funo di Argelato (BO) Italy
Tel: +39 051 860558 · Fax +39 051 6647859 · Mail: info@novalux.it · VAT number 00536541204 · novalux.com
Company subject to the management and coordination by SLV GmbH

This technical data sheet is owned by Novalux S.r.l., all rights reserved. Novalux S.r.l. reserves the right to make changes without prior notice.