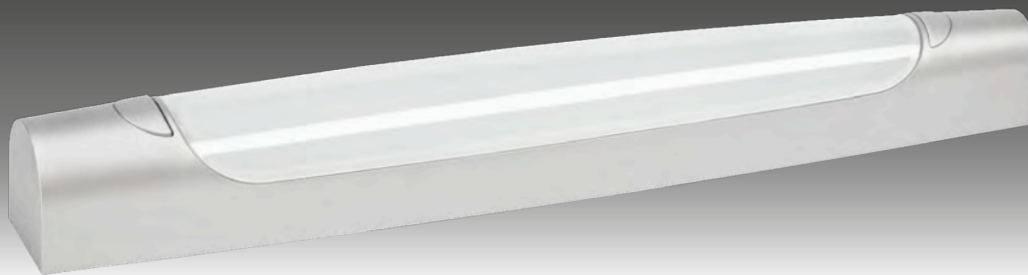


MAUD ASYMÉTRIQUE GRISE 4000 K



800 lm

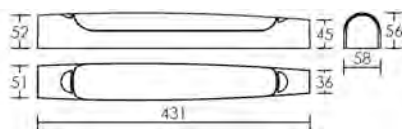


Corps et diffuseur polycarbonate/Diffuseur opale. Pose horizontale ou verticale.
Autorisé volume 2.



230V IP44 IK07 750°C 35 000 h

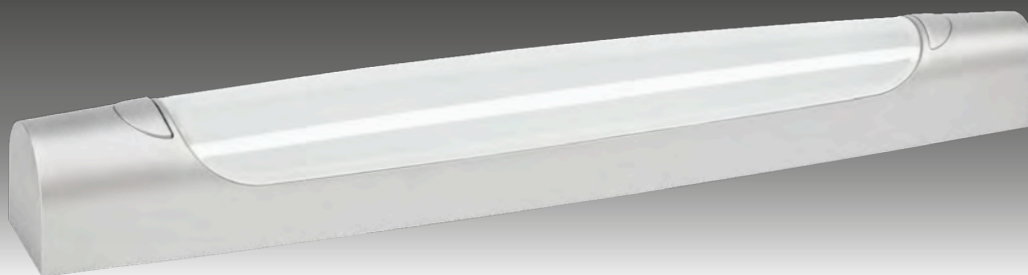
Version	P (w)	Lumens	Teinte	Code
N simple	8	800	○ 4000 K	53061



MAUD ASYMÉTRIQUE GRISE 2700 K



600 lm



Corps et diffuseur polycarbonate/Diffuseur opale. Pose horizontale ou verticale.
Autorisé volume 2.



230V IP44 IK07 750°C 20 000 h

Version	P (w)	Lumens	Teinte	Code
N simple	6	600	● 2700 K	53060

