

ERARD

PRO

ERARD GROUP

Z.I. de Chavanoz - 4 route de la plaine
 38231 PONT DE CHERUY Cedex - FRANCE
 Tél. : +33(0)4 72 46 91 06 - Fax : +33(0)4 72 46 91 01
 www.erardpro.fr

NOTICE DE MONTAGE

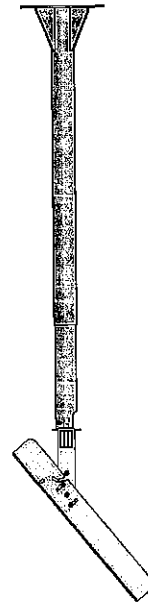
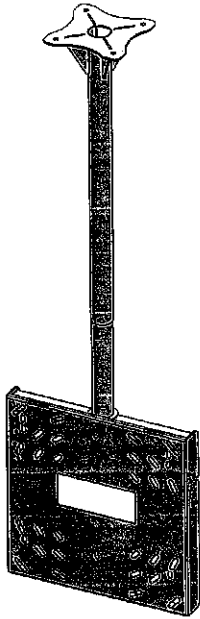
Installation guide

Appoint plafond 32" - 50"
 Plinthe mur 32" - 50"

Fait le : 12/12/12

Ind.C

Référence ERARDPRO :

012421-012422-012423-012424

Nomenclature

Potence partie haute Top arm		Tôle fixation écran Screen mount		Etrier Frame	
	X1 (A)	X1 (B)	X1 (C)		
Vis autoforeuse Self-drilling screw		Vis BHC M5-10 Screw BHC-M5-10		Vis HM10-70 Screw HM10-70	
	X2 (D)		X8 (E)		X1 (F)
Rondelle large M10 Large washer M10		Potence partie basse Bottom arm		Ecrou fin M10 Thin nut M10	
	X1 (G)		X1 (H)		X1 (I)

ERARD
PRO
ERARD GROUP

Z.I. de Chavanoz – 4 route de la plaine
38231 PONT DE CHERUY Cedex - FRANCE
Tél. : +33(0)4 72 46 91 06 – Fax : +33(0)4 72 46 91 01
www.erardpro.fr

NOTICE DE MONTAGE
Installation guide

Support plafond 32" x 50"
Ceiling mount 32" x 50"

Fait le : 16/05/12

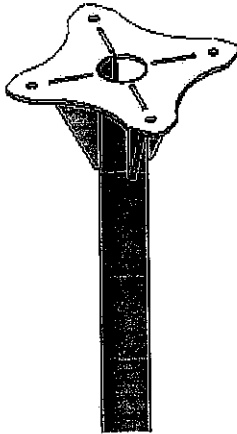
Ind.B

Référence ERARD PRO :

12421-12422-12423-12424

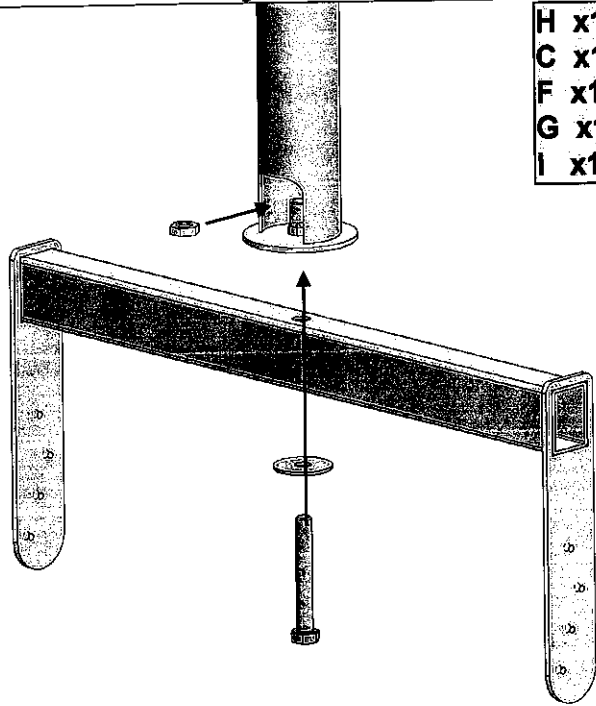
Montage de la base – Base assembly

A x1

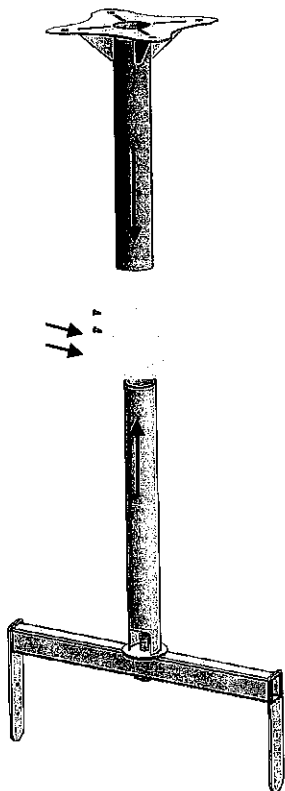


Fixer au plafond
Fix to the ceiling

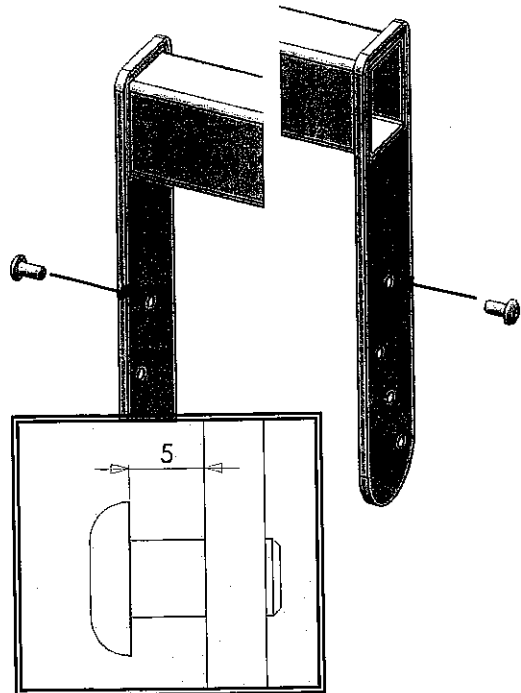
H x1
C x1
F x1
G x1
I x1



D x2



E x2



ERARD
PRO
ERARD GROUP

Z.I. de Chavanoz – 4 route de la plaine
38231 PONT DE CHERUY Cedex - FRANCE
Tél. : +33(0)4 72 46 91 06 – Fax : +33(0)4 72 46 91 01
www.erardpro.fr

NOTICE DE MONTAGE *Installation guide*

Support plafond 32" > 50"
Ceiling mount 32" > 50"

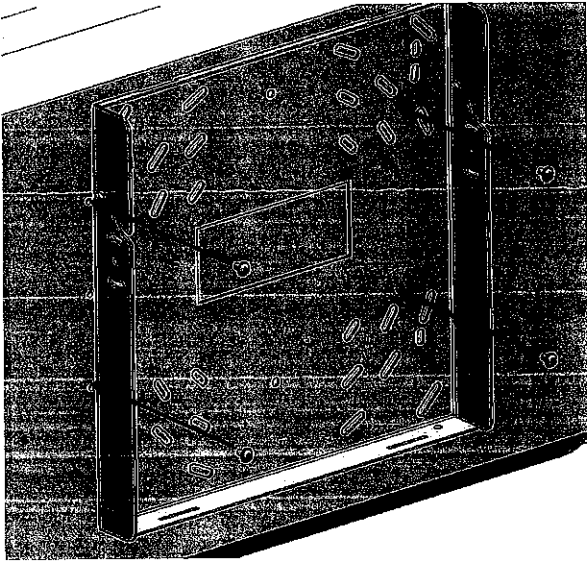
Fait le : 16/05/12

Ind.B

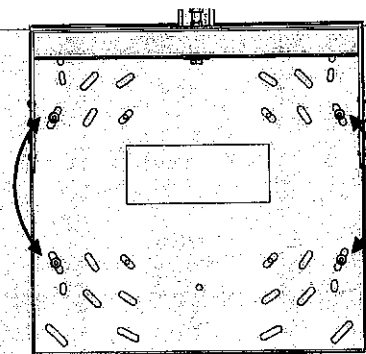
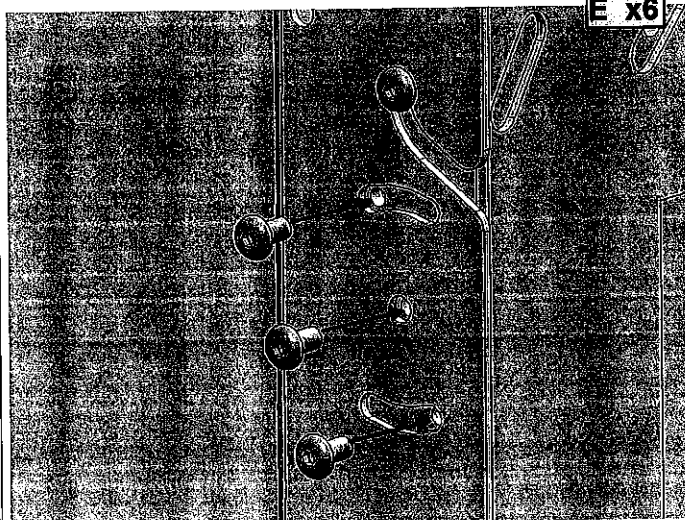
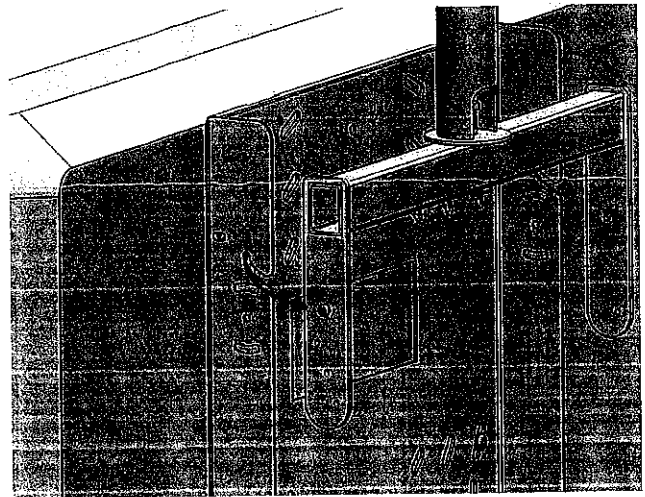
Référence ERARD PRO :

12421-12422-12423-12424

Montage de la base - *Base assembly*



Fixer l'écran sur le support à l'aide du sachet de vis fourni. Ne pas bloquer les vis.
Fix the screen on the mount using the supplied hardware. Don't lock the screw



Régler l'horizontalité de l'écran, bloquer les vis de l'écran.
Adjust horizontality of the screen, then tighten the screws