

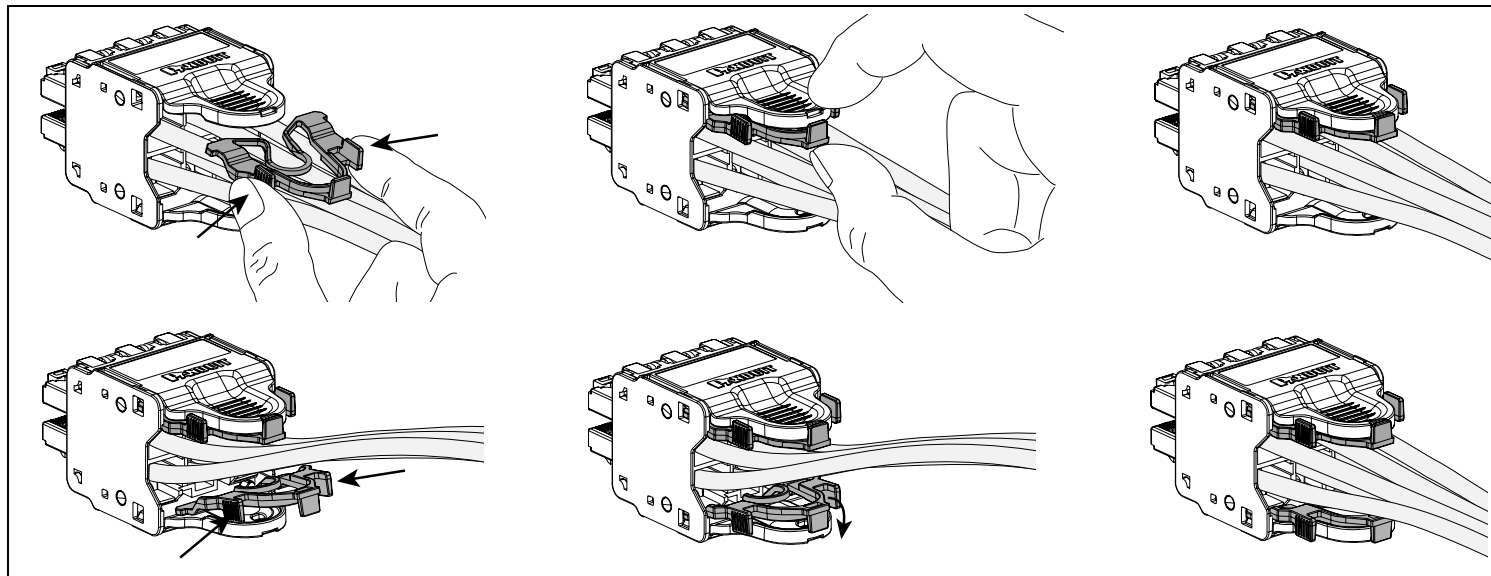


QUICKNET Plug Pack Lock-in Device

Part Number: QPPLD6-X, QPPLD8-X

© Panduit Corp. 2008

INSTALLATION INSTRUCTIONS PN463A



For Instructions in Local Languages
and Technical Support:

www.panduit.com/resources/install_maintain.asp



www.panduit.com

E-mail:
cs@panduit.com

Fax:
(708) 444-6993