

Part number

# CX 03 4M



Male modular insert, Mixo series, crimp connection, 3 poles, 1 module, 40 A 400/690 V 6 kV 3

Product description		Material properties	
<b>Product type</b>	Modular insert	<b>Main material</b>	Polycarbonate
<b>Series</b>	Mixo	<b>Colour</b>	RAL 7032 grey
<b>Connection type</b>	Crimp connection	<b>RoHs conformity</b>	Compliant
<b>Gender</b>	Male	<b>China RoHs - EFUP</b>	E
<b>N. of poles</b>	3 poles	<b>REACH SVHC substances</b>	No
<b>Size</b>	1 module	<b>Approvals / Standards</b>	
<b>Specification</b>	Standard & HNM (High Number of Matings)	<b>Reference standard</b>	EN 61984:2009-06
<b>Technical data</b>		<b>Certifications</b>	CSA, CQC, DNV, BV, EAC
<b>Current</b>	40 A	<b>UL</b>	ECBT2
<b>Voltage</b>	400 - 690 V	<b>cUL</b>	ECBT8
<b>Rated impulse withstand voltage</b>	6 kV	<b>General ordering information</b>	
<b>Pollution degree</b>	3	<b>EAN13 code</b>	8015747041720
<b>Rated voltage according to UL/CSA</b>	600 V	<b>eCl@ss 8.1</b>	27440205
<b>IP degree of protection</b>	IP20 without enclosure, IP65/IP66/IP68/IP69 with enclosure	<b>ETIM 7.0</b>	EC000438
<b>Further technical details</b>		<b>Packaging Information</b>	
<b>Characteristics according to EN 61984</b>	40A 400/690V 6kV 3	<b>Packaging length</b>	180,00 mm
<b>Insulation resistance</b>	≥ 10 GΩ	<b>Packaging height</b>	120,00 mm
<b>Contact resistance</b>	≤ 0,3 mΩ	<b>Packaging width</b>	155,00 mm
<b>Weight</b>	13,00 g	<b>Packaging weight</b>	0,95 kg
<b>Operating temperature range (min, max)</b>	-40 °C ... +125 °C	<b>Packaging volume</b>	3,35 dm <sup>3</sup>
<b>UL 94 flammability rating</b>	V-0	<b>Packaging description</b>	Carton box
		<b>Packaging quantity</b>	60 Pcs
		<b>Packaging EAN code</b>	8015747221184
		<b>Sub-packaging length</b>	35,00 mm
		<b>Sub-packaging height</b>	40,00 mm
		<b>Sub-packaging width</b>	155,00 mm
		<b>Sub-packaging weight</b>	0,16 kg
		<b>Sub-packaging volume</b>	0,22 dm <sup>3</sup>
		<b>Sub-packaging description</b>	Carton tray
		<b>Sub-packaging quantity</b>	10 Pcs
		<b>Sub-packaging EAN barcode</b>	8015747041737

Part number

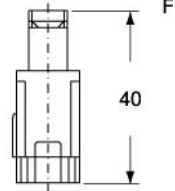
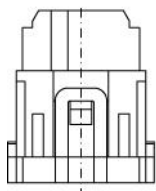
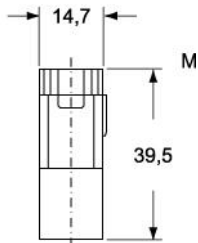
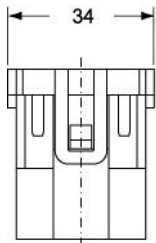
# CX 03 4M



Catalogue drawings

Catalogue drawings

CX 03 4M



CX 03 4F

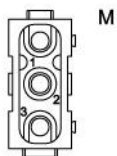
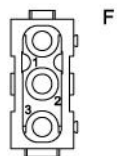
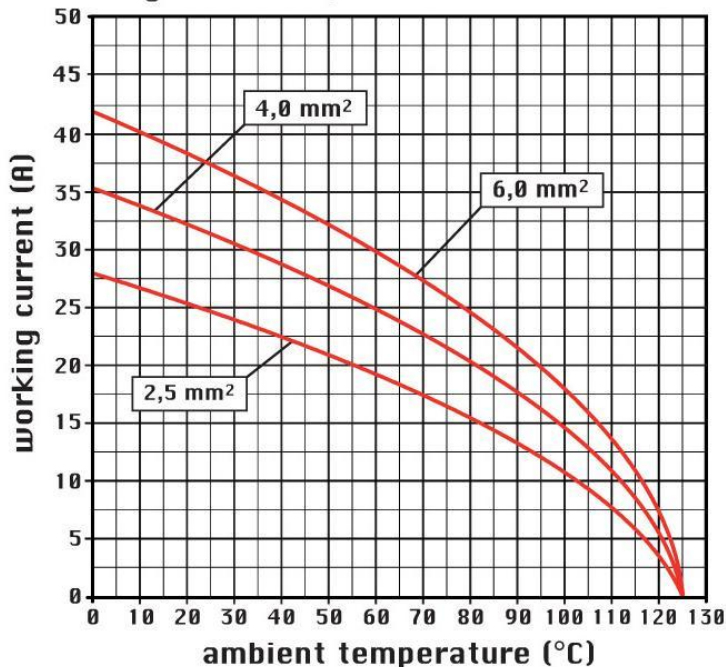


diagram CX 03 poles



## Notes

### STANDARD & HNM (High Number of Matings) MODULES

#### Standard:

-when in combination with standard contacts and standard frames (CX ... TF/TM), must be mounted either in traditional enclosures or in COB panel supports (both up to 500 matings).

#### HNM (High Number of Matings):

-when in combination with HNM contacts and HNM frames (RX ... TF/RM), must be mounted either in HNM enclosures (up to 10.000 matings) or in traditional enclosures with one lever (up to 5.000 matings).

Dimensions shown in mm are not binding and may be changed without notice.