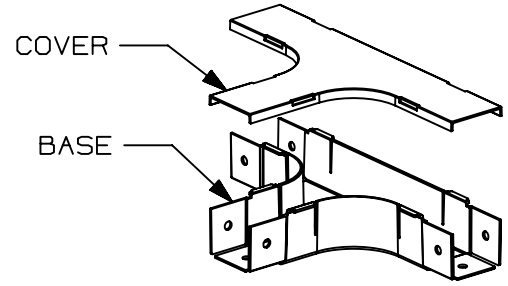
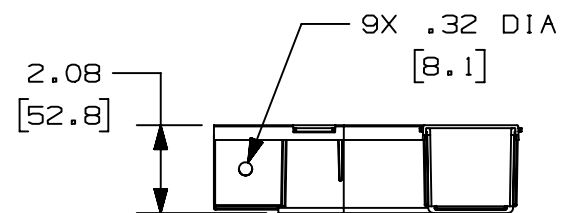
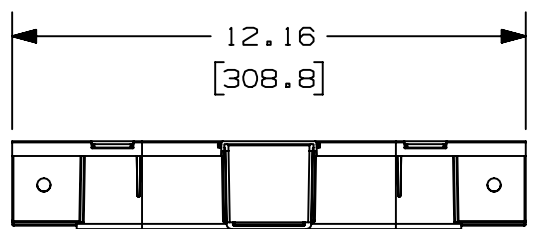
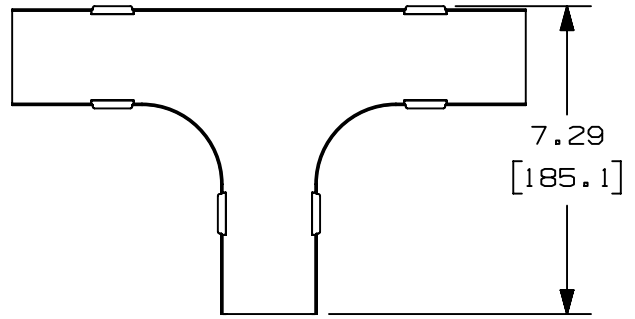


THIS COPY IS PROVIDED ON A RESTRICTED BASIS AND IS NOT TO BE USED IN ANY WAY DETRIMENTAL TO THE INTERESTS OF PANDUIT CORP.

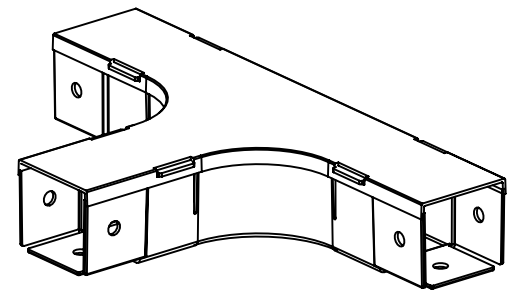


NOTES:

1. SEE CURRENT CATALOG FOR ADDITIONAL PART SUFFIXES TO INDICATE COLOR AND/OR PACKAGE QUANTITY.
2. THE FIBER-DUCT 2x2 AND FIBERRUNNER 2x2 HORIZONTAL TEE FITTING IS DESIGNED WITH A MINIMUM 2" (50.8) BEND RADIUS TO PROTECT FIBER OPTIC CABLES.
3. PARTS SUPPLIED:  
(1) - COVER  
(1) - BASE
4. DIMENSIONS IN PARENTHESES ARE IN METRIC.



| PANDUIT PART NUMBER | WEIGHT                      | MATERIAL |
|---------------------|-----------------------------|----------|
| FT2X2**             | 0.45 LB/EACH<br>(206g/EACH) | ABS      |
| FT2X2L**            | 0.45 LB/EACH<br>(206g/EACH) | PC/ABS   |



| REV | DATE     | BY       | CHK  | APR | DESCRIPTION                             | ECN         |
|-----|----------|----------|------|-----|---|-------------|
| 05B | 8/27/20  | MEX-JAGC | DWR  | DWR | ADDED PART NUMBER                       | V09002DZ/11 |
| 5   | 05-03-13 | JBN      | RTFI | RN  | J. UPDATED DRAWING BORDER & TITLE BLOCK | 35245-35    |

|   |  |                  |  |  |  |
|---|--|------------------|--|--|--|
| TITLE<br><b>FIBER-DUCT 2X2 AND FIBERRUNNER 2X2 HORIZONTAL TEE FITTING - (FT2X2**, FT2X2L**)</b> |  |                  |  | CUSTOMER DRAWING                         |  |
| ITEM REVISION NAME<br>D35245CI/04   |  |                  |  | <b>PANDUIT</b>                           |  |
| DATASET FILE NAME<br>D35245CI_DC/04C  |  |                  |  |  |  |
| DRAWING NUMBER:<br>35245-35   |  |                  |  | MATERIAL:<br>SEE PART NUMBER TABLE ABOVE |  |
| DRAWN BY<br>JBA   |  | DATE<br>06-17-97 |  | THIRD ANGLE PROJECTION                   |  |
| CHK<br>HIW  |  | SCALE<br>NONE    |  | SHT 1 OF 1                               |  |
|   |  |                  |  | SIZE<br>A                                |  |