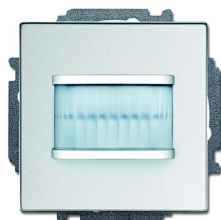


PRODUCT-DETAILS

# MD-F-1.0.1-83

## MD-F-1.0.1-83 Movement detector



### Informations générales

Extension du type de produit	MD-F-1.0.1-83
Code de produit	2CKA006220A0213
EAN	4011395179925
Description courte	MD-F-1.0.1-83 Movement detector
Description longue	With select lens for detection with animal access. For automatic switching of ABB-free@home® actuators dependent on movement and brightness. Switch-off delay of the actuator can be programmed via the web interface of the System Access Point. The bus can be connected via enclosed terminal block.

### Installation

Instructions et manuels	No document needed
-------------------------	--------------------

### Technique

Fiche produit, informations techniques	2CKA001173B8565
Compatible Bus Systems	free@home
Product Range	free@home
Design Range	63x63 future linear Busch-axcent Busch-axcent pur

Type de montage	Flush Mounted
Finition de surface	Surface protection: Lacquered Surface finishing: Matt
Matériau	Thermoplastic
Type d'encastrement	vertical
Model Number	Movement sensor
RAL Number	RAL 9006 - Aluminium blanc
Couleur	aluminium silver
Nombre de batteries	0
Application Function	Electrical Load and Light Control

## Environnement

Température de l'air ambiant	Operation -5 ... +45 °C
Indice de protection	IP20
Statut RoHS	Following EU Directive 2011/65/EU and Amendment 2015/863 July 22, 2019
Informations RoHS	2CKA200000E4989
REACH Declaration	2CKA309999E9999
Conflict Minerals Reporting Template (CMRT)	9AKK108468A3363

## Dimensions

Produit Largeur Net	71 mm
Produit Hauteur Net	71 mm
Produit Longueur Net	30 mm
Poids net	55 g
Profondeur d'encastrement (t <sub>2</sub> )	8.5 mm

## Commande

ID du produit remplacé	6220-0-0213
------------------------	-------------

## Certificats et Déclarations (Numéro de document)

Déclaration de Conformité - CE	2CKA100000E1377
--------------------------------	-----------------

## Classifications

ETIM 8	EC001582 - Movement sensor for bus system
ETIM 9	EC001582 - Movement sensor for bus system
Catégorie DEEE	5. Small Equipment (No External Dimension More Than 50 cm)
WEEE B2C / B2B	Business To Consumer
CN8	8536 50 80
eClass	V11.0 : 27143144

---

## Catégories

---

Produits basse tension → Home and Building Automation → free@home → User Operation → Solo → Motion Detectors

