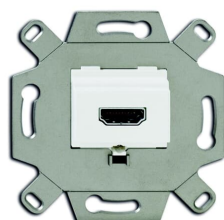


PRODUCT-DETAILS

0261/32-500

Flush Mounted Inserts USB 1gang alpine white



Informations générales

Extension du type de produit	0261/32-500
Code de produit	2CKA000230A0431
EAN	4011395167663
Description courte	Flush Mounted Inserts USB 1gang alpine white
Description longue	Suitable for telephone connection unit cover plates 2539-21x and 1766-xxx. To link high-definition digital audio and video data from e.g. SAT-receiver, DVD-/Blue-Ray-player to plasma-type, LCD- or-LED-TVs/screens. HDMI-type A, 3D-compatible. Fully HD ready (1920 x 1080 pixel). For 20-wire HDMI-cables via screw-type terminals. For trunk systems, flush-mounted wall boxes and underfloor systems. For easy installation and to follow the valid bending radii the "Kaiser- electronic-wall-box" type 1068-02 or 9062-74 is recommended. Without cover plate. Without claws.

Installation

Instructions et manuels	DEBJE-0073-1-7891
-------------------------	-------------------

Technique

Fiche produit, informations techniques	No document needed
Application	USB
Design Range	63x63 Busch-balance SI Busch-art linear

future linear
 Busch-axcent
 Busch-axcent pur
 solo
 carat
 future
 Busch-Dynasty
 Pure Stainless Steel
 Reflex SI
 Reflex SI Linear
 Reflex SI/SI Linear
 Busch-Duro 2000
 Busch-Duro 2000 SI Linear
 alpha
 alpha exclusive
 alpha nea
 impuls

Type de montage	Flush Mounted
Type of Fastening	Mounting with Screw
Type d'affichage	Without indication field
Outlet Orientation	Straight
Finition de surface	Matt
Matériau	Metal
RAL Number	RAL 9010 - Blanc pur
Couleur	alpine white
Application Function	Data Communication / Multimedia

Environnement

Indice de protection	IP20
Statut RoHS	Following EU Directive 2011/65/EU and Amendment 2015/863 July 22, 2019
Informations RoHS	2CKA200000E0048
REACH Declaration	2CKA309999E9999
Conflict Minerals Reporting Template (CMRT)	9AKK108468A3363

Dimensions

Produit Largeur Net	71 mm
Produit Hauteur Net	71 mm
Produit Longueur Net	43 mm
Poids net	90 g
Profondeur d'encastrement (t ₂)	34 mm

Commande

ID du produit remplacé	0230-0-0431
------------------------	-------------

Certificats et Déclarations (Numéro de document)

Déclaration de Conformité - CE	2CKA200000E0048
--------------------------------	-----------------

Classifications

ETIM 8	EC000018 - Insert/cover for communication technology
ETIM 9	EC000018 - Insert/cover for communication technology
Catégorie DEEE	5. Small Equipment (No External Dimension More Than 50 cm)
WEEE B2C / B2B	Business To Consumer
CN8	8536 69 90
eClass	V11.0 : 27144049

Accessories

Identifier	Description	Type	Quantity	Unit Of Measure
2CKA001753A2629	Cover Plate TAE 1 gang platinum - alpha	1766-20	1	piece
2CKA001753A2637	Cover Plate TAE 1 gang bronze - alpha	1766-21	1	piece
2CKA001710A2496	Cover Plate TAE 1 gang ivory - alpha	1766-22G	1	piece
2CKA001753A7743	Cover Plate TAE 1 gang studio white - alpha	1766-24G	1	piece
2CKA001710A3310	Cover Plate TAE 1 gang palladium - alpha	1766-260	1	piece
2CKA001710A3336	Cover Plate TAE 1 gang titanium - alpha	1766-266	1	piece
2CKA001753A0055	Cover Plate TAE 1 gang ivory - impuls	1766-72	1	piece
2CKA001753A4989	Cover Plate TAE 1 gang alpine white - impuls	1766-74	1	piece
2CKA001753A0176	Cover Plate TAE 1 gang studio white matt - impuls	1766-774	1	piece
2CKA001753A0148	Cover Plate TAE 1 gang black matt - impuls	1766-775	1	piece
2CKA001753A0056	Cover Plate TAE 1 gang aluminium silver - impuls	1766-783	1	piece
2CKA001753A5465	Cover Plate TAE 1 gang champagne metallic - impuls	1766-79	1	piece
2CKA001710A3854	Cover Plate TAE 1 gang grey metallic - 63x63	1766-803	1	piece
2CKA001710A3613	Cover Plate TAE 1 gang anthracite - 63x63	1766-81	1	piece
2CKA001710A3144	Cover Plate TAE 1 gang ivory white - 63x63	1766-82	1	piece
2CKA001710A3659	Cover Plate TAE 1 gang aluminium silver - 63x63	1766-83	1	piece
2CKA001710A4084	Cover Plate TAE 0 gang brass - 63x63	1766-840-500	1	piece
2CKA001710A3992	Data / Telecommunication / Antenna TAE 0 gang studio white - 63x63	1766-84-500	1	piece
2CKA001710A3765	Cover Plate TAE 1 gang stainless steel - Pure Stainless Steel	1766-866	1	piece
2CKA001710A3926	Cover Plate TAE 1 gang studio white matt - 63x63	1766-884	1	piece
2CKA001710A3903	Cover Plate TAE 1 gang black matt - 63x63	1766-885	1	piece
2CKA001724A4329	Data / Telecommunication / Antenna TAE 0 gang white - Busch-Duro 2000	2539-212-500	1	piece
2CKA001724A4327	Data / Telecommunication / Antenna TAE 0 gang alpine white - Reflex SI/SI Linear	2539-214-500	1	piece
2CKA001724A4279	Data / Telecommunication / Antenna TAE 0 gang white - Basic55	2539-92-507	1	piece
2CKA001724A4312	Data / Telecommunication / Antenna TAE 0 gang champagne - Basic55	2539-93-507	1	piece
2CKA001724A4275	Data / Telecommunication / Antenna TAE 0 gang alpine white - Basic55	2539-94-507	1	piece
2CKA001724A4315	Data / Telecommunication / Antenna TAE 0 gang château-black - Basic55	2539-95-507	1	piece
2CKA001724A4318	Data / Telecommunication / Antenna TAE 0 gang chalet white - Basic55	2539-96-507	1	piece

Catégories

Produits basse tension → Wiring Accessories - Light Switch Ranges → Flush Mounted Inserts → Multimedia

