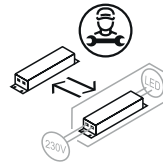
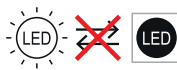


# VISUAL3CCT



FACADE SANS ALIMENTATION

VERSION 25W

VERSION 10W



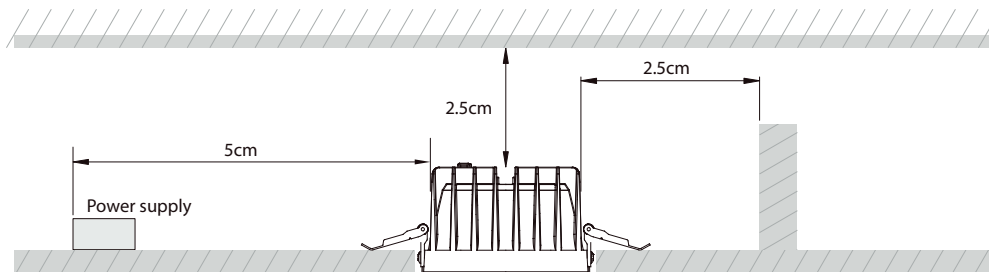
## Caractéristiques techniques / Características técnicas / Características técnicas / Caratteristiche tecniche

Modèle-Référence / Modelo-Referencia / Modello-Riferimento / Modelo-Referência	BL02105410	BL02185410/15	BL02255411	BL02505412
Tension nominale / Tensión nominal / Tensione nominale / Tensão nominal		230VAC 50Hz sortie 30-40Vdc		
Puissance nominale / Potencia nominal / Potenza nominale / Potência nominal	10W	18W	25W	50W
Type-Longueur de câble / Tipo-Longitud del cable / Tipo-Lunghezza del cavo / Tipo-Comprimento do cabo				
Indice de protection / Grado de protección / Indice di protezione / Grau de protecção	IP40 (IP54 FRONT/FACADE) / IK06			
Dimensions / Dimensiones / Dimensioni / Dimensões	diam 145 htr 77		diam 228 htr 107	diam 280 htr 123
Lampes LED / Lámparas LED / Lampade LED / Lâmpadas LED	LED SMD			
Recouvrable / can be cover or not	NO			
Flux lumineux nominal / Flujo luminoso nominal / Flusso luminoso nominale / Fluxo luminoso nominal	985 (1000 ERP)	1700 (2600 ERP)	2700 (6500 ERP)	4900 (7600 ERP)
Durée de vie nominale / Vida útil nominal / Durata di vita nominale / Tempo de vida nominal	≥ 50000 h (L80 @ 25°C)			
Cycles de commutation / Ciclos de conmutación / Cicli di accensione / Ciclos de comutação				
Température de couleur / Temperatura de color / Temperatura di colore / Temperatura de cor	3000K, 4000K et 6000K			
Indice de rendu des couleurs / Índice de rendimento de color / Índice di resa del colore / Índice de restituição das cores	≥ 80 Ra			
Angle de faisceau nominal / Ángulo del haz luminoso nominal / Angolo del fascio nominale / Ângulo nominal do feixe	60° (ERP CONE 120°)			
Facteur de puissance / Factor de potencia / Fattore di potenza / Fator de potência	> 0.9			

### WARNING



L'installation doit être réalisée par un professionnel qualifié  
 Veuillez couper l'alimentation générale afin d'éviter les risques d'électrocutions  
 Veuillez vous assurer de la bonne tension du réseau  
 Please make sure to turn the power off before installation  
 Terminal block not included, installation and maintenance must be performed by qualified person  
 Please make sure the lamp is working with the correct input voltage



### Ceiling cutout table / encastrement

Downlight Dia (inch)	10W/18W	25W	50W
Ceiling Cutout (mm)	120-135	200-220	230-260

# VISUAL3CCT

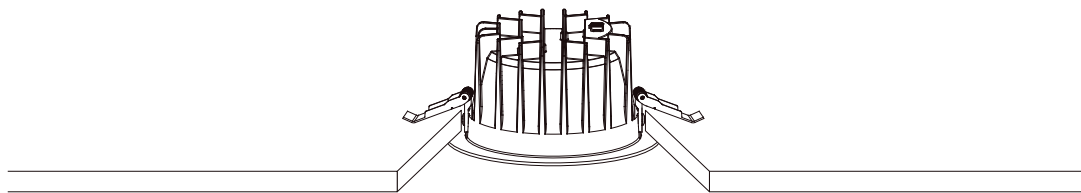
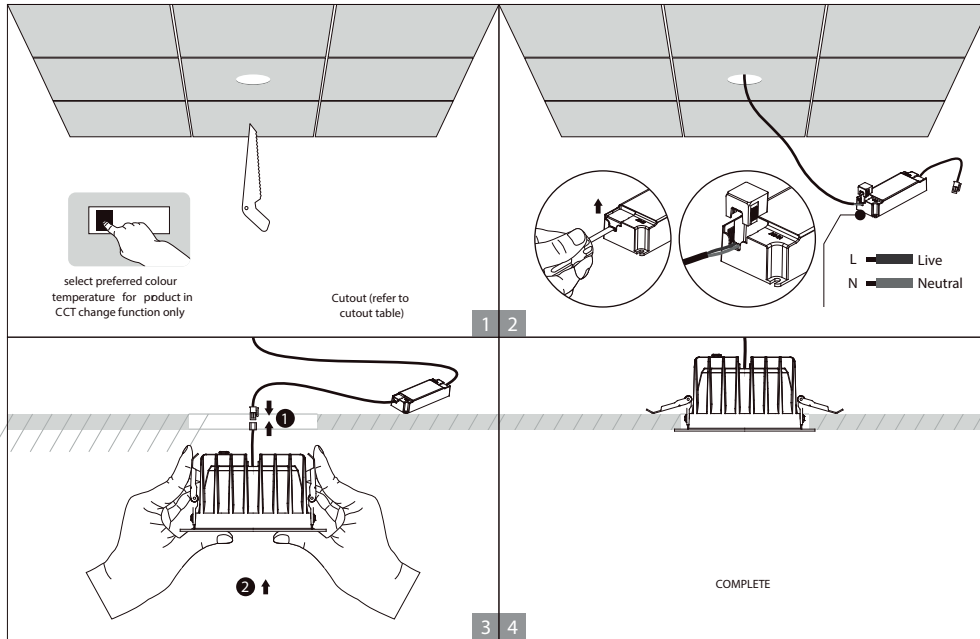


FACADE SANS ALIMENTATION



VERSION 25W

VERSION 10W



BL02105410

BL02185410/15

BL02255411

BL02505412

