



Descriptions

This insulation kit is required to set 14°C cooling operation.

Applicable Models

- PLA-ZM · EA2 series
- PLA-M · EA2 series

How to Use / How to Install

1. Checking parts

• This manual and the following parts are included in Insulation Kit.
(The figures show the shapes of the parts as viewed from above.)

P.No. Name	①Refrigerant piping area insulator	②Refrigerant piping area insulator	③Refrigerant piping area insulator	④Refrigerant piping area insulator	⑤Hanging bracket insulator (for refrigerant piping area)	⑥Indoor unit side panel insulator	⑦Indoor unit side panel insulator
Qty	1	1	1	1	1	1	1
Shape							
P.No. Name	⑧Indoor unit side panel insulator	⑨Hanging bracket insulator (for unit side panel)	⑩Hanging bracket insulator (for unit side panel)	⑪Indoor unit top panel insulator	⑫Indoor unit top panel insulator	⑬Drain pipe insulator	
Qty	1	2	1	1	1	1	
Shape							
P.No. Name	⑭Insulator for entry for remote controller cable	⑮Insulator for entry for power cable	⑯Spare Size: t5×300×300				
Qty	1	1	1				
Shape							
P.No. Name	⑰Grille insulator Size: t5×523×13	⑱Grille insulator Size: t15×145×15	⑲Grille insulator	⑳Grille insulator Size: t2×188×8	㉑Grille insulator	㉒Grille insulator Size: t2×40×5	
Qty	4	1	4	4	3	8	
Shape							
P.No. Name	㉓Corner panel insulator Size: t6×35×7	㉔Corner panel insulator	㉕Corner panel insulator Size: t5×134×8	㉖Corner panel insulator	㉗Corner panel insulator	㉘Corner panel insulator	
Qty	8	4	4	4	4	4	
Shape							
P.No. Name	㉙Corner panel insulator	㉚Corner panel insulator					
Qty	1	1					
Shape							

*Insulation Kit includes two bags: one contains parts ①-⑯ and the other contains parts ⑰-⑳.

Remarks

- Attach the insulators correctly as shown in this installation manual. Incomplete attachment could cause moisture to adhere or drip.
- The insulators have adhesive on them. When attaching the insulators, remove the protective sheets. Once the insulators are attached, they cannot be removed. Check the attachment positions carefully before attachment.
- Attach the insulators securely so that they do not peel off. Make sure that there are no gaps and that the insulators are not torn.

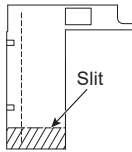
OPTIONAL PARTS

INDOOR UNIT

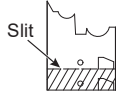
2. Preparations for attaching insulations

- To attach to a small type indoor unit, cut off insulators ②-④ and ⑥-⑧ into the appropriate size.
- The shaded portions of insulators shown below should be cut off. The cut-off portions have slits: Use a tool such as scissors to cut. (The cut-off portions can be discarded.)

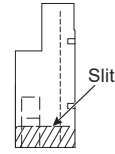
Refrigerant piping area insulator ②



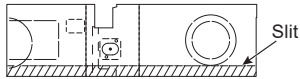
Refrigerant piping area insulator ③



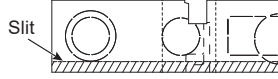
Refrigerant piping area insulator ④



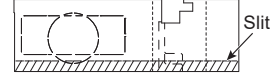
Indoor unit side panel insulator ⑥



Indoor unit side panel insulator ⑦



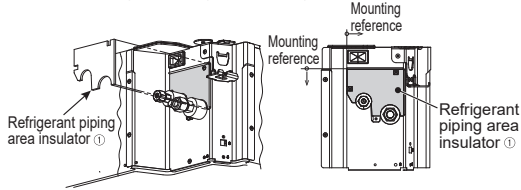
Indoor unit side panel insulator ⑧



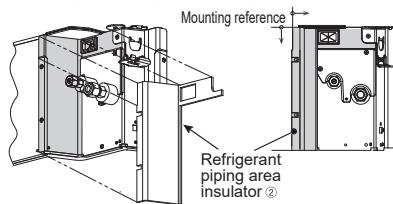
3. Attaching to refrigerant piping area

- Attach the insulators ①-⑤ to the refrigerant piping area.
- Attach the insulators in the numerical order of ①-⑤ to fit the shapes.
- Before attaching the insulators, check the shapes and the positions to apply them.
- If it is difficult to attach the insulators, cut them off into the appropriate size.
- Attach the insulators without any gaps between them.
- If any gap or break occurs during attachment, cut off the spare ⑥ appropriately and attach it.

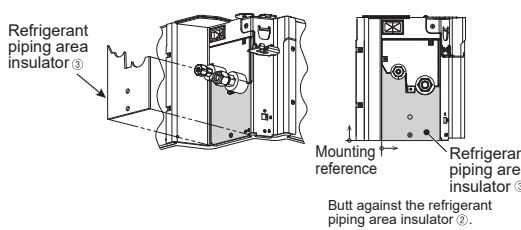
Attaching the refrigerant piping area insulator ①



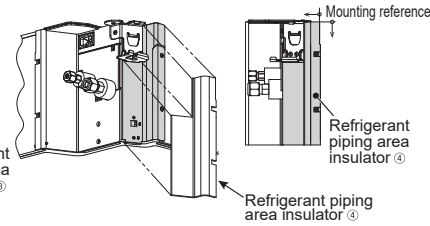
Attaching the refrigerant piping area insulator ②



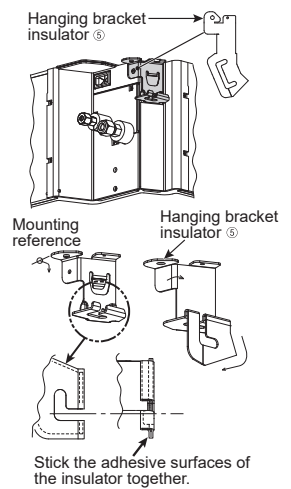
Attaching the refrigerant piping area insulator ③



Attaching the refrigerant piping area insulator ④

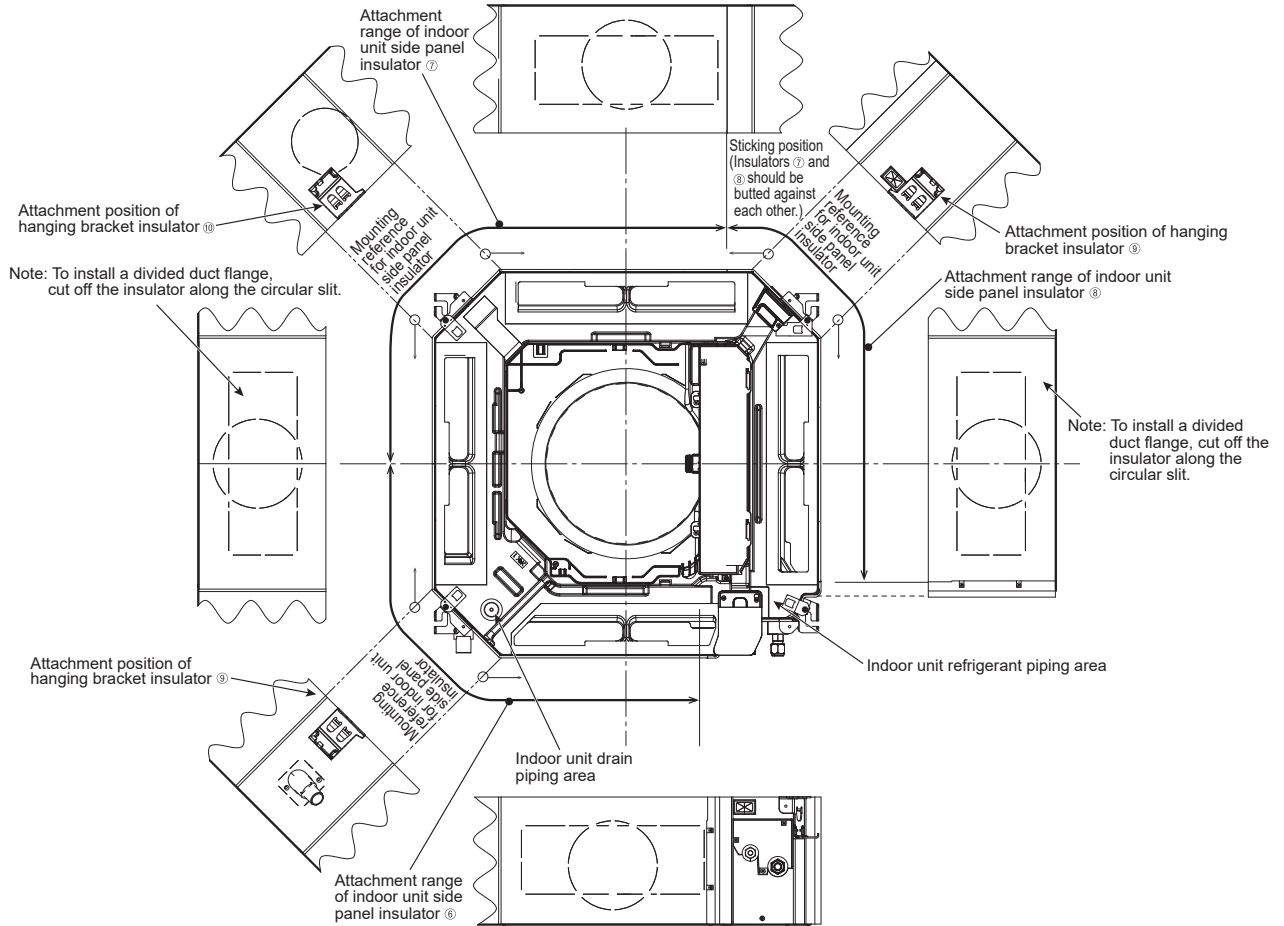


Attaching the hanging bracket insulator ⑤

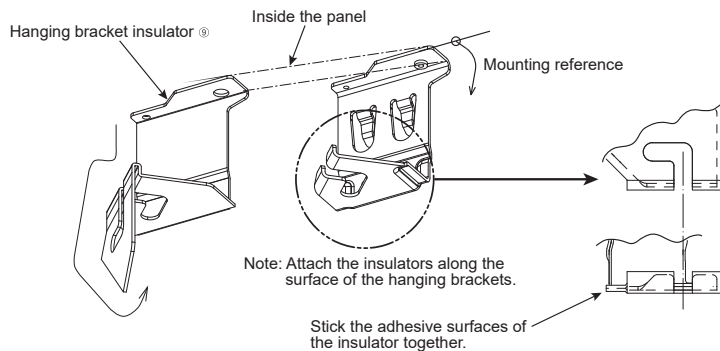


4. Attaching to sides of indoor unit

- Attach the insulators ⑥-⑧ to the sides of indoor unit.
- * Attach the insulators in the numerical order of ⑥-⑧ to fit the shapes.
- * Before attaching the insulators, check the shapes and the positions to apply them.
- * If it is difficult to attach the insulators, cut them off into the appropriate size.
- * Attach the insulators without any gaps between them.
- * If any gap or break occurs during attachment, cut off the spare ⑥ appropriately and attach it.
- * When installing a duct flange for fresh air intake or a divided duct flange, cut off the insulator at the attachment position along the slit, and attach it by referring to the appropriate installation manual. (After attachment, provide sufficient heat insulation.)



- Attach the insulators ⑨ and ⑩ to the hanging brackets on the sides of indoor unit.
- * Before attaching the insulators, check the shapes and the positions to apply them.
- * Use the same procedure to attach the hanging bracket insulators ⑨ (at two points) and hanging the bracket insulator ⑩ (at one point).
- * If it is difficult to attach the insulators, cut them off into the appropriate size.
- * If any gap or break occurs during attachment, cut off the spare ⑩ appropriately and attach it.

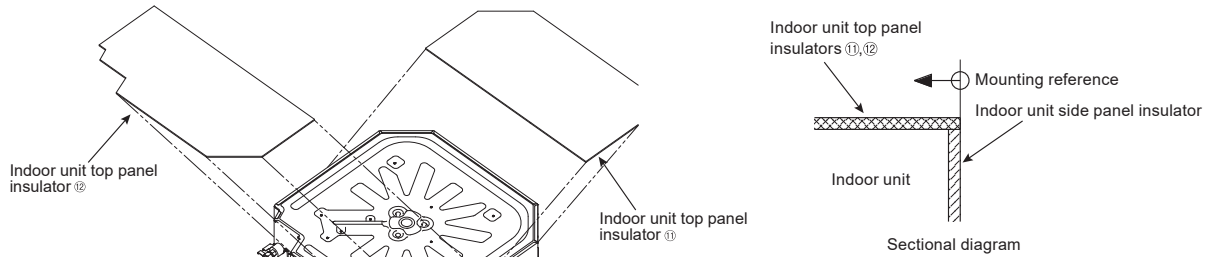


OPTIONAL PARTS

INDOOR UNIT

5. Attaching to top panel of indoor unit

- Attach the insulators ① and ② to the top panel of the indoor unit.
- * Align the edges of the insulators and the top panel.
- * Before attaching the insulators, check the shapes and the positions to apply them.
- * Attach the insulators without any gaps between them.
- * If any gap or break occurs during attachment, cut off the spare ⑥ appropriately and attach it.
- * Make sure that there is no accumulation of excess air.

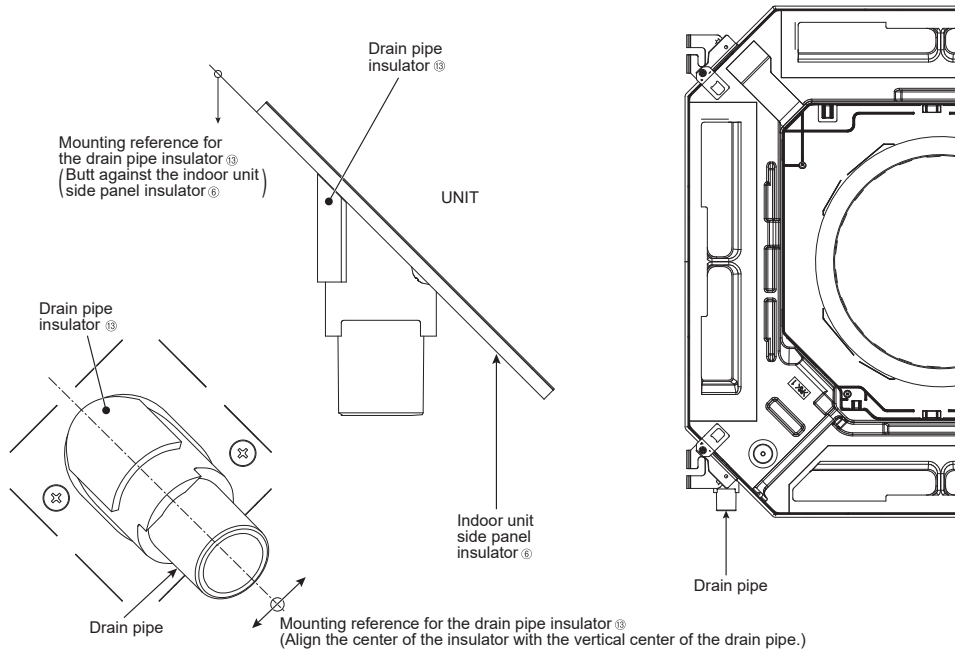


⚠ CAUTION

- When attaching insulators ① and ②, do not press too hard on the plastic parts (black) shown in the left figure. If pressed with force, the part could touch the fan inside the indoor unit, which could cause abnormal sound or a fault.
- The screw tips protrude from the top panel of indoor unit: Take great care when proceeding with this work.

6. Attaching to drain pipe

- Attach the insulator ③ to the drain pipe of the indoor unit.
- * Attach the insulator along the surface of the drain pipe.
- * Before attaching the insulator, check the shape and the position to apply it.

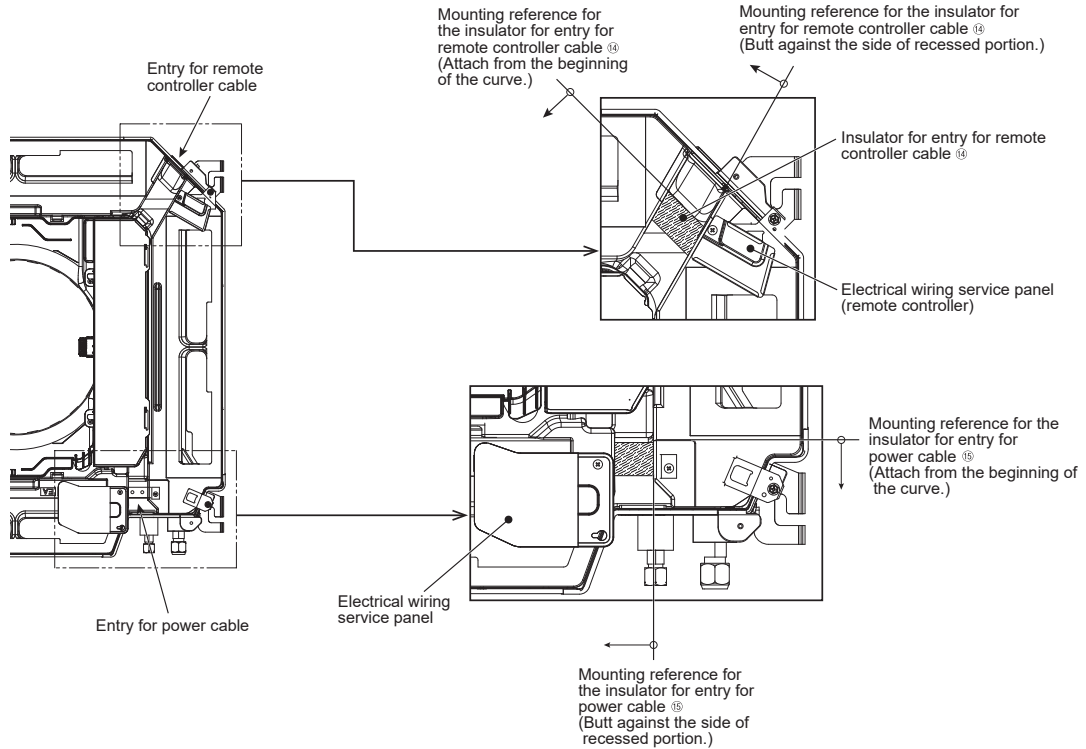


OPTIONAL PARTS

INDOOR UNIT

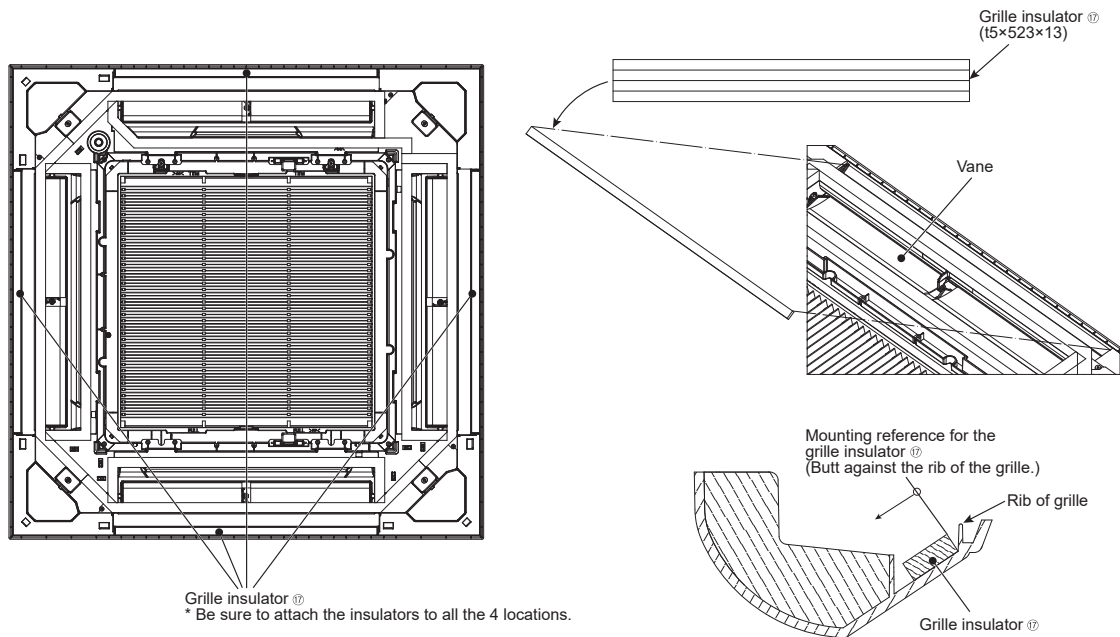
7. Attaching to entries for remote controller cable and power cable

- Attach the insulators ⑭ and ⑮ in the recessed portions for wiring of the indoor unit.
- * Fit the insulators in the recessed portions.
- * Before attaching the insulators, check the shapes and the positions to apply them.
- * For removal of the electrical wiring service panel (remote controller) and electrical wiring service panel, refer to the installation manual that comes with the indoor unit.
- * For electrical work, refer to the installation manual that comes with the indoor unit.



8. Attaching to grille

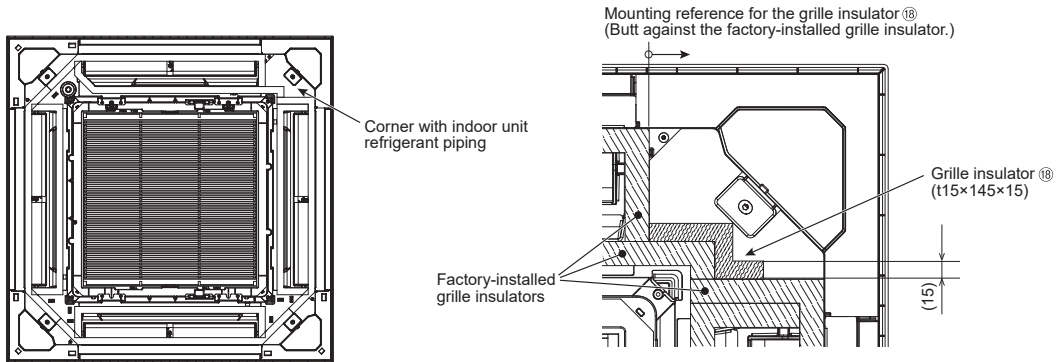
- (1) Attach the insulators ⑰ on the back (non-design side) of grille.
- * Before attaching the insulators, check the shapes and the positions to apply them.
 - * Do not apply excessive force on movable parts, such as vanes, during work. Doing so may cause an accident or damage.



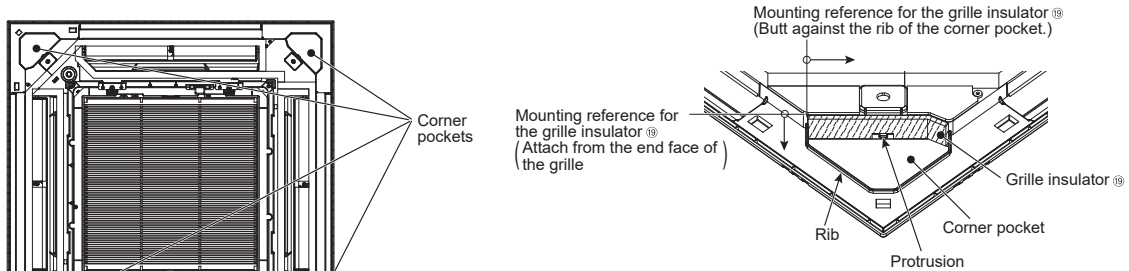
OPTIONAL PARTS

INDOOR UNIT

- (2) Attach the insulator ⑱ near the corner with indoor unit refrigerant piping on the back (non-design side) of grille.
- * Before attaching the insulator, check the shape and the position to apply it.
 - * Attach the insulator to the factory-installed grille insulators. Avoid deformation of the grille insulators when attaching it.
 - * Do not apply excessive force on movable parts, such as vanes, during work. Doing so may cause an accident or damage.

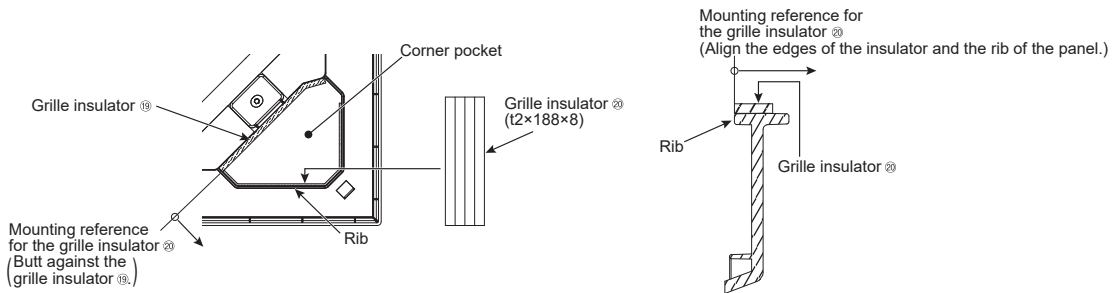


- (3) Attach the insulators ⑲ and ⑳ to the inside of the corner pockets.
- * Before attaching the insulators, check the shapes and the positions to apply them.
 - * Remove the corner panels before work.
 - For removal, refer to the installation manual that comes with the indoor unit.
 - * Attach the insulators to all the 4 corner pockets.
 - * Do not apply excessive force on movable parts, such as vanes, during work. Doing so may cause an accident or damage.

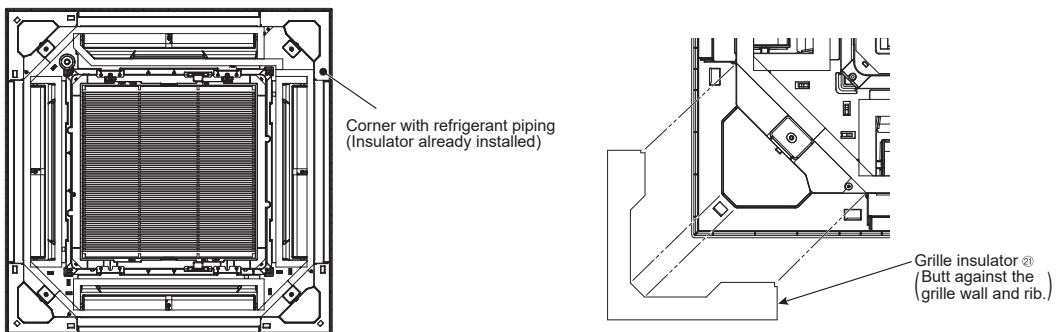


CAUTION

- Do not cover the protrusion in the corner pocket when attaching the grille insulator ⑲. The corner panel cannot be installed if the protrusion is covered.



- (4) Attach the insulators ㉑ on the back (non-design side) of grille.
- * Attach the insulators to 3 corners. (An insulator has been installed to the corner with refrigerant piping at the factory.)
 - * Before attaching the insulators, check the shapes and the positions to apply them.
 - * Do not apply excessive force on movable parts, such as vanes, during work. Doing so may cause an accident or damage.

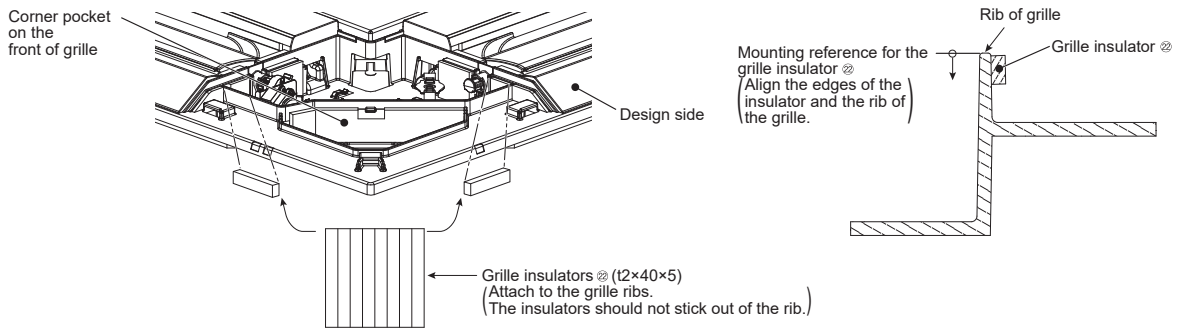


OPTIONAL PARTS

INDOOR UNIT

(5) Attach the insulators ② on the front (design side) of grille.

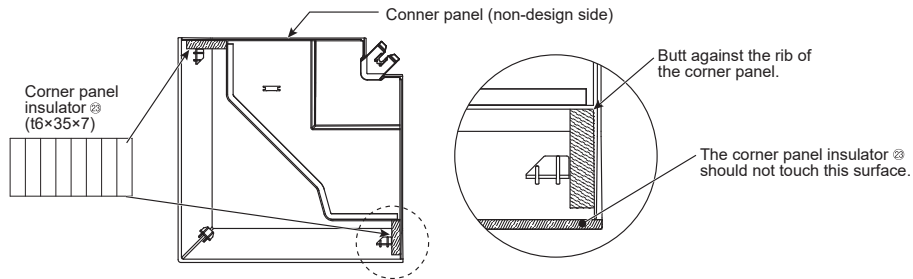
- * Attach 2 insulators to each of the 4 corner areas.
- * Before attaching the insulators, check the shapes and the positions to apply them.
- * Do not apply excessive force on movable parts, such as vanes, during work. Doing so may cause an accident or damage.



9. Attaching to corner panels

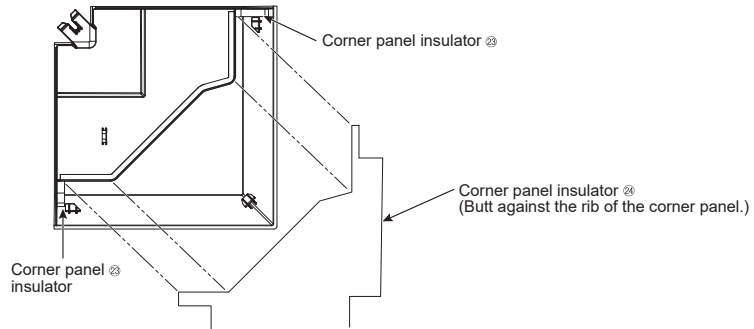
(1) Attach the insulators ② to the corner panel of the grille.

- * Before attaching the insulators, check the shapes and the positions to apply them.
- * Attach the insulators to the signal receiver corner panel and the i-see Sensor corner panel as well as the standard corner panels.
- * Do not apply excessive force on the movable part of i-see Sensor or the signal receiver. Doing so may cause an accident or damage.



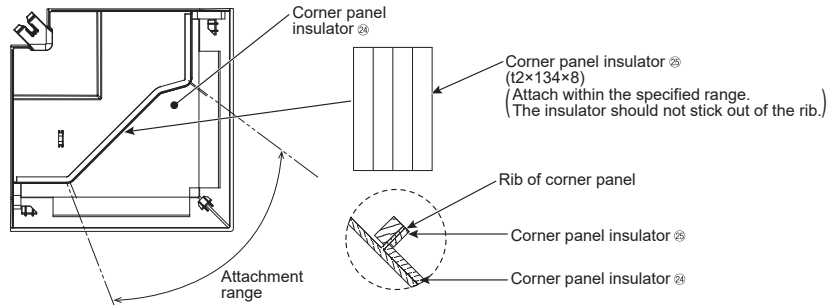
(2) Attach the insulators ② to the corner panels of the grille.

- * Before attaching the insulators, check the shapes and the positions to apply them.
- * Attach the insulators to the signal receiver corner panel and the i-see Sensor corner panel as well as the standard corner panels.
- * Do not apply excessive force on the movable part of i-see Sensor or the signal receiver. Doing so may cause an accident or damage.



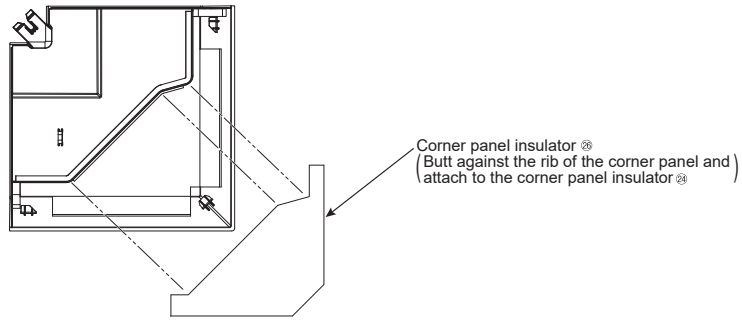
(3) Attach the insulators ② to the corner panels of the grille.

- * Before attaching the insulators, check the shapes and the positions to apply them.
- * Attach the insulators to the signal receiver corner panel and the i-see Sensor corner panel as well as the standard corner panels.
- * Do not apply excessive force on the movable part of i-see Sensor or the signal receiver. Doing so may cause an accident or damage.



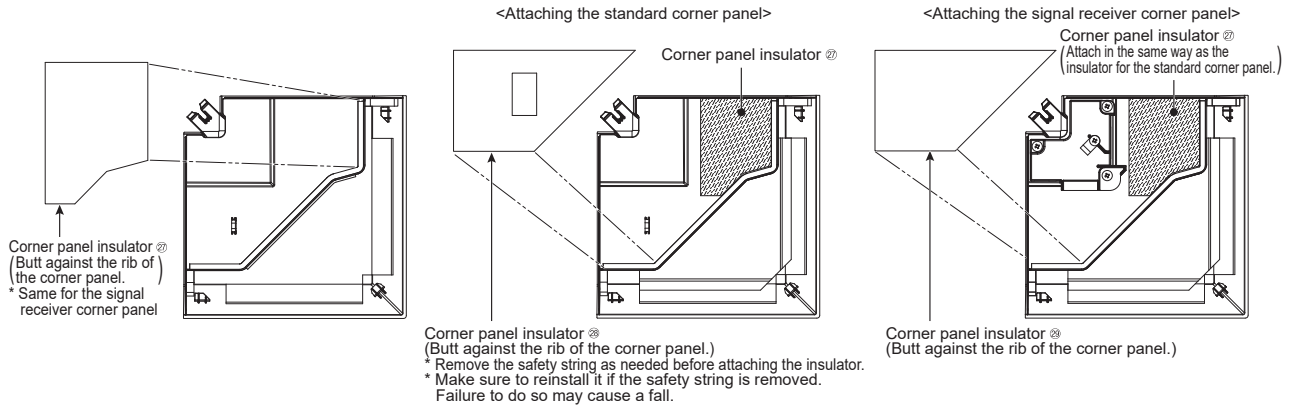
(4) Attach the insulators ㉞ to the corner panels of the grille.

- * Before attaching the insulators, check the shapes and the positions to apply them.
- * Attach the insulators to the signal receiver corner panel and the i-see Sensor corner panel as well as the standard corner panels.
- * Do not apply excessive force on the movable part of i-see Sensor or the signal receiver. Doing so may cause an accident or damage.



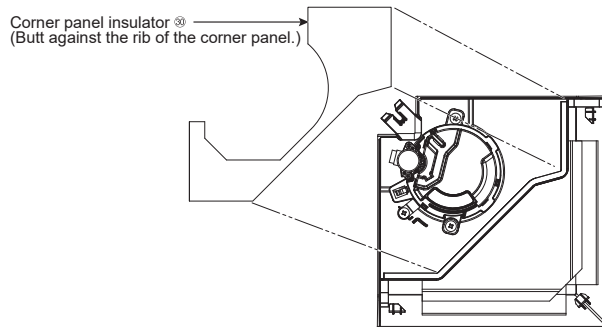
(5) Attach the insulators ㉟ and the insulator(s) ㉞ or ㉟ to the standard corner panels and the signal receiver corner panel.

- * Before attaching the insulators, check the shapes and the positions to apply them.
- * Attach the insulators ㉟ to both the standard and the signal receiver corner panels.
- * Attach the insulators ㉞ only to the standard corner panels.
- * Attach the insulator ㉟ only to the signal receiver corner panel.
- * Do not apply excessive force on the signal receiver. Doing so may cause an accident or damage.



(6) Attach the insulator ㉟ to the i-see Sensor corner panel of the grille.

- * Before attaching the insulator, check the shape and the position to apply it.
- * Do not apply excessive force on the i-see Sensor. Doing so may cause an accident or damage.



10. Setting remote controller

- To enable the setting of 14°C in the cooling operation, refer to the operation manual and instruction book for the indoor unit.