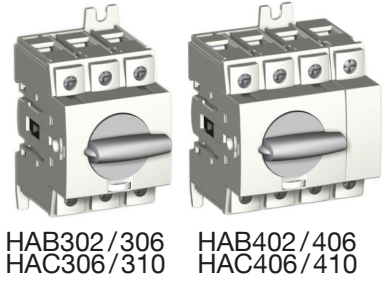


- (EN) Load break
- (FR) Interrupteur sectionneur
- (DE) Modularer Lasttrennschalter
- (AR) القاطع الناحية

- User instructions
- Notice d'instructions
- Bedienungsanleitung
- دليل الاستعمال

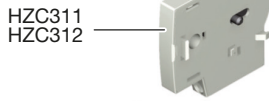
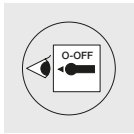
6H5117e



20A - 100A

HZC211 / 212
HZC213 / 214

Ref. Switch Réf. Inter. Lasttrennschalter Artikel ميزة داخلية	Rating Calibre Stromstärke المعيار	AC	Ref. Terminal shrouds Réf. Capot cache-bornes Klemmenabdeckungen Artikel ميزة/غطاء البراغي	
HAB302	3 x 20 A	AC- 23A	HZC211	
HAB402	4 x 20 A		HZC212	
HAB303	3 x 32 A		HZC211	
HAB403	4 x 32 A		HZC212	
HAB304	3 x 40 A		HZC211	
HAB404	4 x 40 A		HZC212	
HAB306	3 x 63 A		AC- 22A	HZC211
HAB406	4 x 63 A			HZC212
HAC306	3 x 63 A	AC- 23A	HZC213	
HAC406	4 x 63 A		HZC214	
HAC308	3 x 80 A		HZC213	
HAC408	4 x 80 A		HZC214	
HAC310	3 x 100 A	AC- 22A	HZC213	
HAC410	4 x 100 A		HZC214	

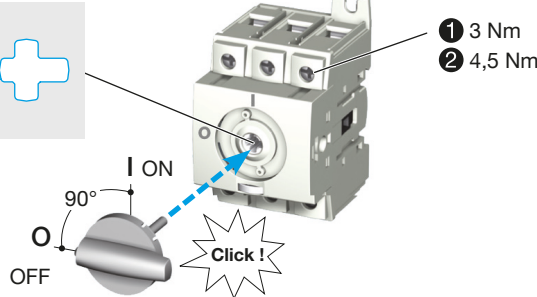
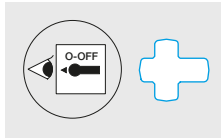


(A)
Direct operation
Commande directe
Direkt Drehantrieb
امر مباشر

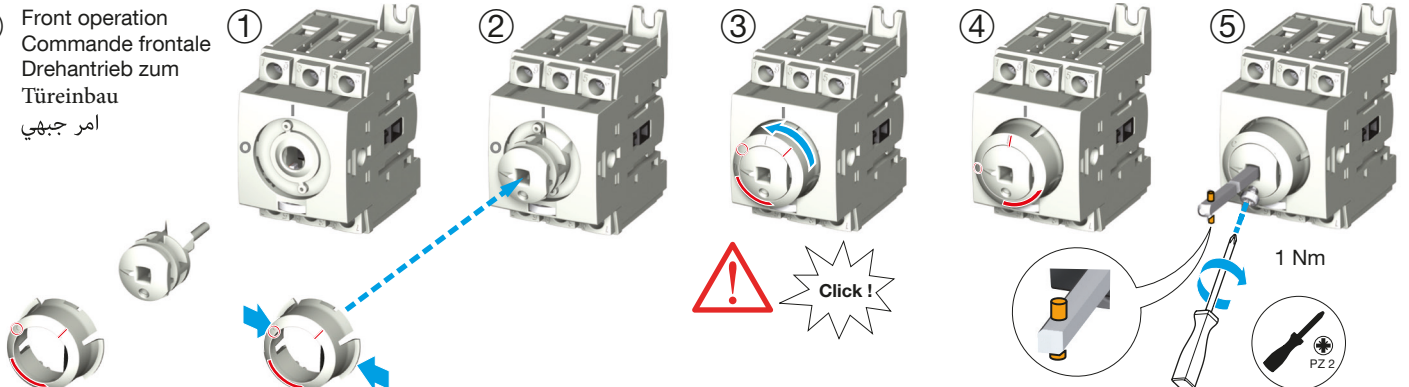
(B)
Front operation
Commande frontale
Drehantrieb zum
Türeinbau
امر جبهوي

(C)
Right side operation
Commande latérale droite
Drehantrieb zum
Seiteneinbau
امر جهوي يمين

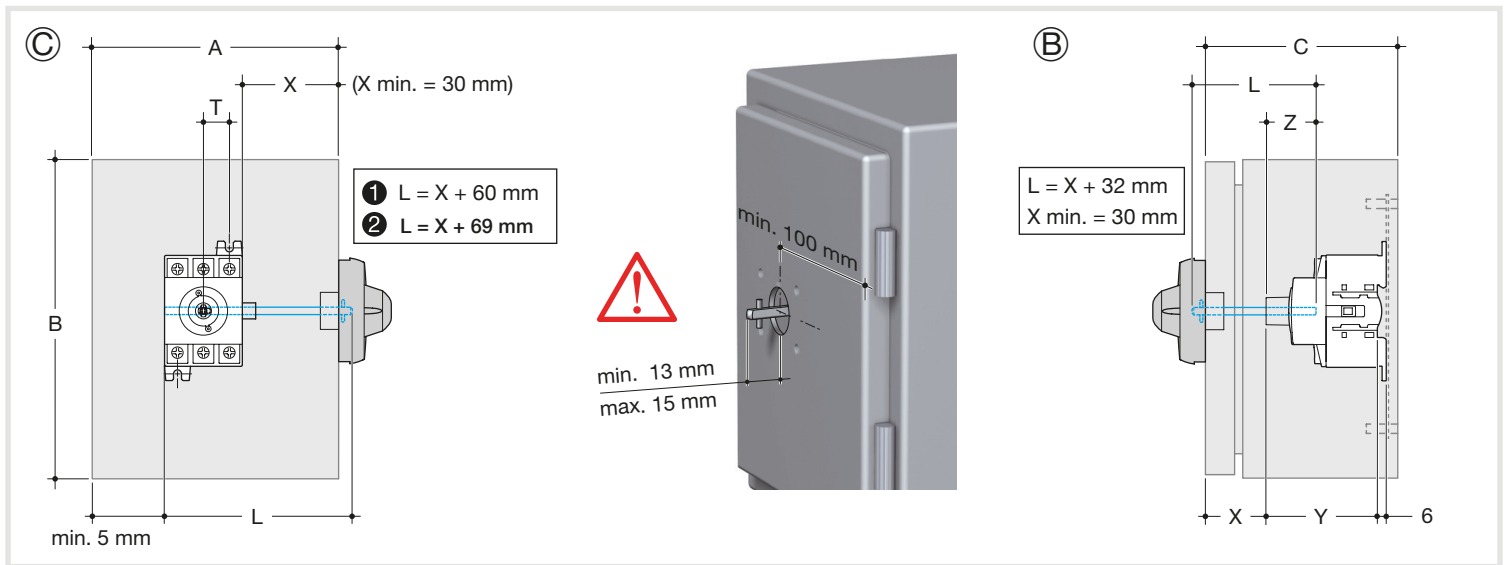
(A)
Direct operation
Commande directe
Direkt Drehantrieb
امر مباشر



(B)
Front operation
Commande frontale
Drehantrieb zum
Türeinbau
امر جبهوي



Edition 06/19 - IS IS 535617-E / RECTO-VERSO / S blanc offset quadri 80g/m²



Ref. / Réf. / Artikel / ميزة	A	B	C	Y	Z min.	Z max.
	mm					
HAB302 / 303 / 304 / 306 HAB402 / 403 / 404 / 406	152,4	203,2	101,6	75	12	17
HAC306 / 308 / 310 HAC406 / 408 / 410	203,2	254	101,6	75		

6,5 PZ 2	Use 75°C Cu wire only Utiliser uniquement du fil cuivre 75°C Nur mit 75°C Kupfer Leitungsdrat استعمال الا لخيط نحاسي 75	
		1 9 mm - 12 mm 2 1,5 mm ² - 16 mm ² 1 3 Nm 2,5 mm ² - 35 mm ² 2 4,5 Nm

**Switch/
Interrupteur
Lasttrennschalter
قاطع**

**Aux. Contact/
Contact aux.
Hilfskontakt
موصل الى**

$W = A1 + (x) \times A2 \quad (x = 2 \text{ max})$

Ref. / Réf. / Artikel /	A1	A2	B1	AD	H	T	N	M
	mm							
HAB302 / 303 / 304 / 306	45	8,8	68	48,5	75	15	75	30
HAB402 / 403 / 404 / 406	60		15			75	30	
HAC306 / 308 / 310	54		76			17,5	85	35
HAC406 / 408 / 410	71,5		76			17,5	85	35