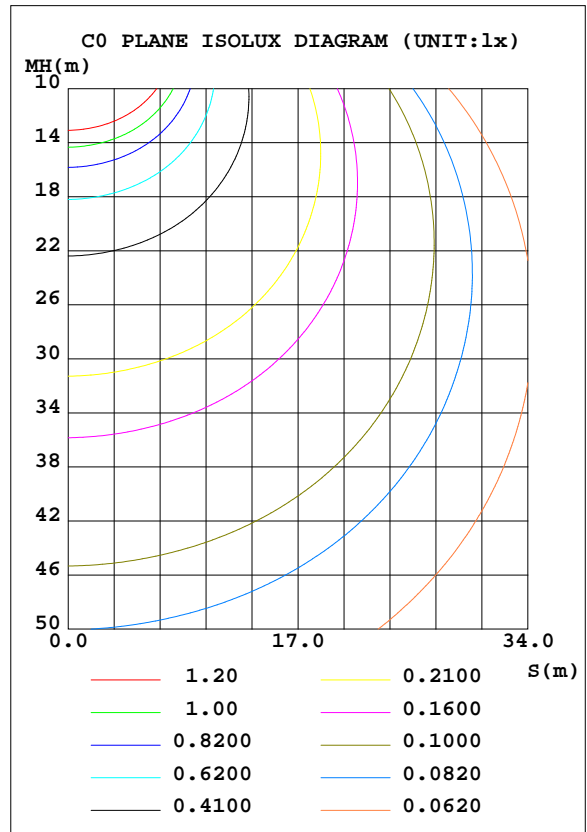
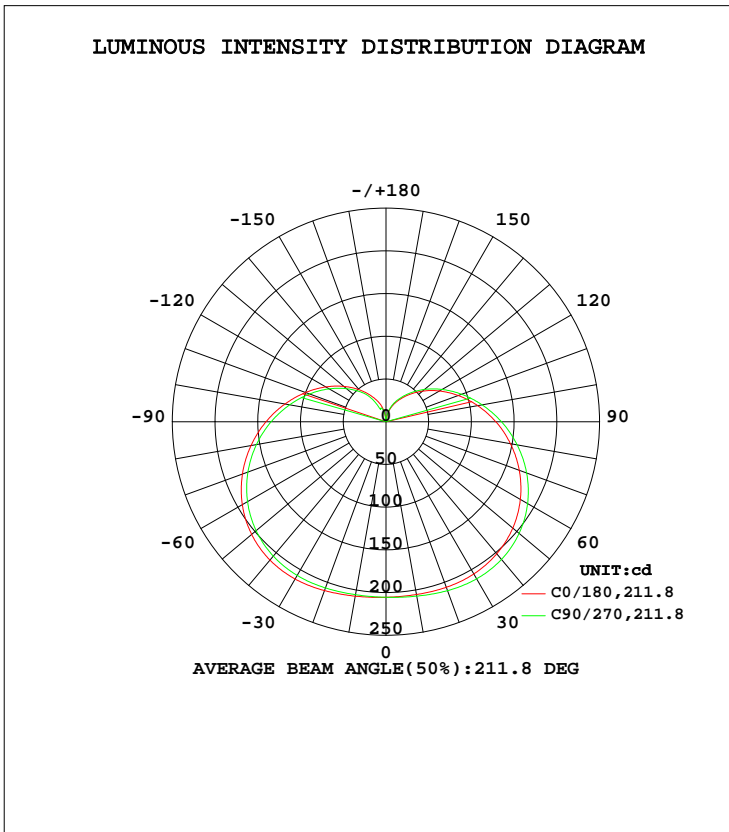


LUMINAIRE PHOTOMETRIC TEST REPORT

Test:U:230.0V I:0.1090A P:13.19W PF:0.5261 Freq:50.01Hz Lamp Flux:1624.02x1 lm		
NAME:	TYPE:	WEIGHT:
SPEC.:A1521ST 14.5W 40K	DIM.:	SERIAL No.:A1901415B001
MFR.: EVERFINE	SUR.:	Shielding Angle:

DATA OF LAMP		PHOTOMETRIC DATA Eff: 123.11 lm/W			
MODEL		I <sub>max</sub> (cd)	213.1	S/MH(C0/180)	1.58
NOMINAL POWER(W)		LOR(%)	100.0	S/MH(C90/270)	1.54
RATED VOLTAGE(V)		TOTAL FLUX(lm)	1624.0	η UP, DN(C0-180)	14.4, 35.5
NOMINAL FLUX(lm)	1624.02	CIE CLASS	SEMI-D.	η UP, DN(C180-360)	14.8, 35.3
LAMPS INSIDE	1	η up(%)	29.2	CIBSE SHR NOM	1.75
TEST VOLTAGE(V)		η down(%)	70.8	CIBSE SHR MAX	1.75



C Range: 0 - 360DEG  
 C Interval: 22.5DEG  
 Test Speed: HIGH  
 Temperature:24.6DEG  
 Operators:LWQ  
 Test Date:2019-01-29

γ Range: 0 - 180DEG  
 γ Interval: 0.5DEG  
 Test System:EVERFINE GO-R5000\_V2 SYSTEM V2.0.363T  
 Humidity:37%  
 Test Distance:1.509m [K=1.0000]  
 Remarks:

ZONAL FLUX DIAGRAM

ZONAL FLUX DIAGRAM:

γ	C0	C45	C90	C135	C180	C225	C270	C315	γ	Φ zone	Φ total	%lum, lamp
10	205.3	206.3	207.3	207.6	207.3	206.5	205.5	204.9	0- 10	19.65	19.65	1.21,1.21
20	206.2	208.5	210.4	210.8	210.3	209.0	207.0	205.6	10- 20	58.82	78.47	4.83,4.83
30	205.7	209.2	212.3	213.0	212.6	210.9	207.8	205.2	20- 30	96.87	175.3	10.8,10.8
40	201.8	206.2	210.3	211.4	211.3	209.4	205.3	201.6	30- 40	131.1	306.4	18.9,18.9
50	193.7	198.6	203.4	204.8	205.2	203.2	198.4	193.9	40- 50	157.9	464.4	28.6,28.6
60	181.6	186.4	191.4	193.2	194.1	192.2	187.1	182.1	50- 60	174.6	639.0	39.3,39.3
70	166.0	170.3	175.1	177.4	178.8	177.0	171.9	166.9	60- 70	179.6	818.5	50.4,50.4
80	147.9	151.3	155.8	158.6	160.4	158.7	153.9	149.1	70- 80	173.3	991.8	61.1,61.1
90	128.6	131.1	135.2	138.3	140.5	138.9	134.5	130.1	80- 90	157.8	1150	70.8,70.8
100	109.0	110.6	114.3	117.7	120.1	118.7	114.6	110.7	90-100	135.9	1285	79.2,79.2
110	90.06	91.04	94.32	97.82	100.3	98.91	95.28	91.89	100-110	110.8	1396	86,86
120	72.22	72.87	75.81	79.30	81.65	80.38	77.05	74.10	110-120	85.19	1481	91.2,91.2
130	55.88	56.34	58.98	62.30	64.52	63.33	60.35	57.63	120-130	61.31	1543	95,95
140	41.26	41.68	44.03	47.08	48.97	47.95	45.35	42.84	130-140	40.63	1583	97.5,97.5
150	28.88	29.20	31.14	33.80	35.29	34.34	28.28	30.04	140-150	24.10	1607	99,99
160	18.15	18.56	20.07	22.54	23.79	21.92	17.18	19.78	150-160	11.79	1619	99.7,99.7
170	5.484	3.374	7.352	10.87	11.41	10.56	10.56	8.102	160-170	4.390	1624	100,100
180	0.3206	0.3315	0.3278	0.3231	0.3200	0.3200	0.3342	0.3242	170-180	0.3500	1624	100,100
DEG	LUMINOUS INTENSITY:cd									UNIT:lm		

Conical surface Flux(90deg): 382.63 lm

%lum = 23.6%  
 %lamp = 23.6%

Conical surface Flux(120deg): 638.95 lm

%lum = 39.3%  
 %lamp = 39.3%

C Range: 0 - 360DEG  
 C Interval: 22.5DEG  
 Test Speed: HIGH  
 Temperature:24.6DEG  
 Operators:LWQ  
 Test Date:2019-01-29

γ Range: 0 - 180DEG  
 γ Interval: 0.5DEG  
 Test System:EVERFINE GO-R5000\_V2 SYSTEM V2.0.363T  
 Humidity:37%  
 Test Distance:1.509m [K=1.0000]  
 Remarks:

UGR(Unified Glare Rating) Table

Test:U:230.0V I:0.1090A P:13.19W PF:0.5261 Freq:50.01Hz Lamp Flux:1624.02x1 lm										
NAME:					TYPE:			WEIGHT:		
SPEC.:A1521ST 14.5W 40K					DIM.:			SERIAL No.:A1901415B001		
MFR.: EVERFINE					SUR.:			Shielding Angle:		
ceiling/cavity	0.7	0.7	0.5	0.5	0.3	0.7	0.7	0.5	0.5	0.3
walls	0.5	0.3	0.5	0.3	0.3	0.5	0.3	0.5	0.3	0.3
working plane	0.2	0.2	0.2	0.2	0.2	0.2	0.2	0.2	0.2	0.2
Room dimensions	Viewed crosswise					Viewed endwise				
x = 2H y = 2H	23.7	25.0	24.4	25.7	26.5	24.0	25.2	24.6	25.9	26.7
3H	26.5	27.7	27.2	28.4	29.2	26.8	28.0	27.4	28.7	29.5
4H	28.0	29.2	28.7	29.9	30.7	28.3	29.5	29.0	30.2	31.0
6H	29.7	30.8	30.5	31.5	32.4	30.0	31.1	30.7	31.8	32.7
8H	30.7	31.7	31.4	32.4	33.3	31.0	32.0	31.7	32.8	33.6
12H	31.8	32.8	32.5	33.5	34.4	32.1	33.1	32.8	33.8	34.7
4H 2H	24.7	25.8	25.3	26.5	27.3	24.8	25.9	25.5	26.7	27.5
3H	27.6	28.6	28.3	29.3	30.2	27.8	28.8	28.5	29.5	30.4
4H	29.3	30.2	30.0	31.0	31.9	29.5	30.4	30.3	31.2	32.1
6H	31.1	32.0	31.9	32.7	33.7	31.4	32.2	32.2	33.0	34.0
8H	32.2	32.9	33.0	33.7	34.7	32.4	33.2	33.2	34.0	35.0
12H	33.4	34.1	34.2	34.9	35.9	33.6	34.3	34.4	35.2	36.1
8H 4H	29.9	30.7	30.7	31.5	32.5	30.1	30.9	30.9	31.7	32.7
6H	32.1	32.7	32.9	33.6	34.6	32.3	32.9	33.1	33.8	34.8
8H	33.3	33.9	34.1	34.7	35.7	33.5	34.1	34.3	34.9	36.0
12H	34.7	35.2	35.5	36.1	37.1	34.9	35.5	35.8	36.3	37.4
12H 4H	30.1	30.8	30.9	31.6	32.6	30.3	31.0	31.1	31.8	32.8
6H	32.4	33.0	33.2	33.8	34.8	32.5	33.1	33.4	34.0	35.0
8H	33.7	34.2	34.5	35.1	36.1	33.9	34.4	34.7	35.3	36.3
Variations with the observer position at spacings:										
S = 1.0H	+ 0.1 / - 0.1					+ 0.1 / - 0.1				
1.5H	+ 0.2 / - 0.3					+ 0.2 / - 0.3				
2.0H	+ 0.3 / - 0.4					+ 0.3 / - 0.4				

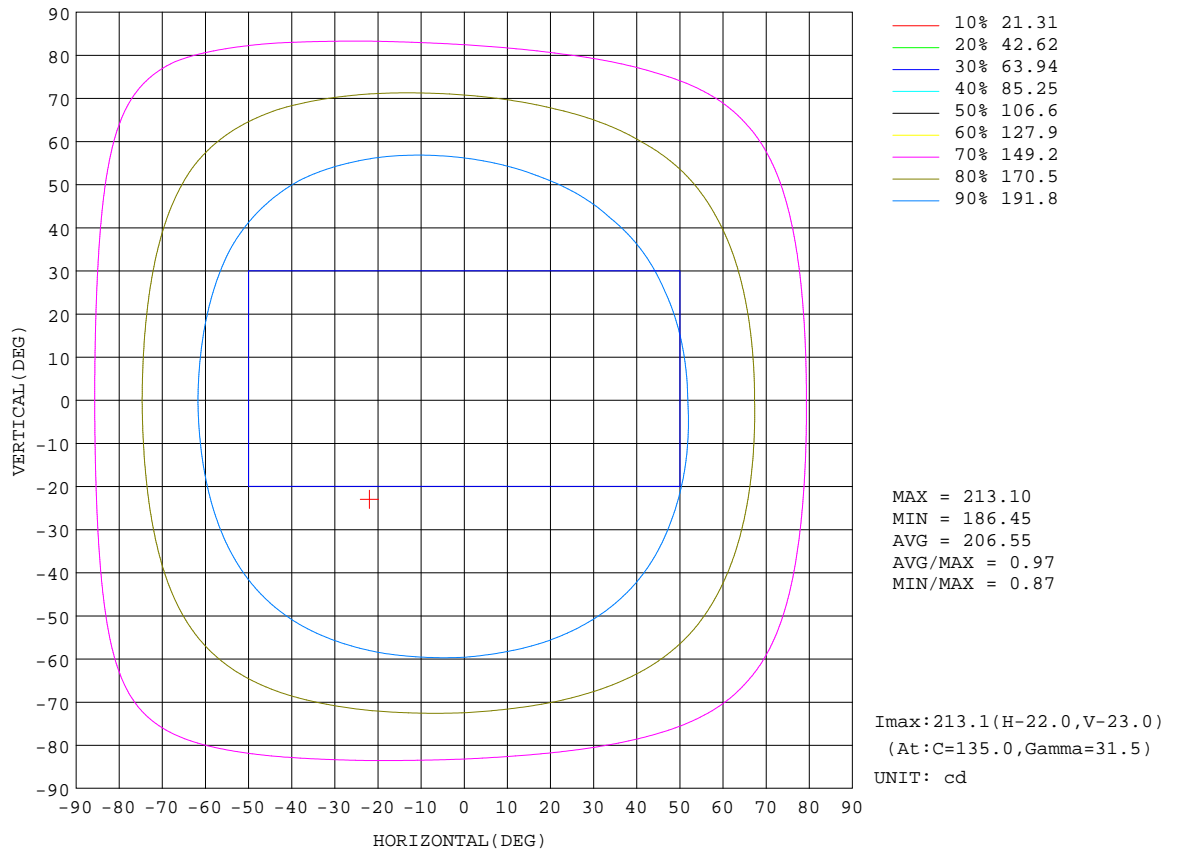
CIE Pub.117, 1624 lm Total Lamp Luminous Flux Correct (8log(F/F0) = 1.7)

C Range: 0 - 360DEG  
 C Interval: 22.5DEG  
 Test Speed: HIGH  
 Temperature:24.6DEG  
 Operators:LWQ  
 Test Date:2019-01-29

γ Range: 0 - 180DEG  
 γ Interval: 0.5DEG  
 Test System:EVERFINE GO-R5000\_V2 SYSTEM V2.0.363T  
 Humidity:37%  
 Test Distance:1.509m [K=1.0000]  
 Remarks:

**ISOCANDELA DIAGRAM**

Test:U:230.0V I:0.1090A P:13.19W PF:0.5261 Freq:50.01Hz Lamp Flux:1624.02x1 lm		
NAME:	TYPE:	WEIGHT:
SPEC.:A1521ST 14.5W 40K	DIM.:	SERIAL No.:A1901415B001
MFR.: EVERFINE	SUR.:	Shielding Angle:

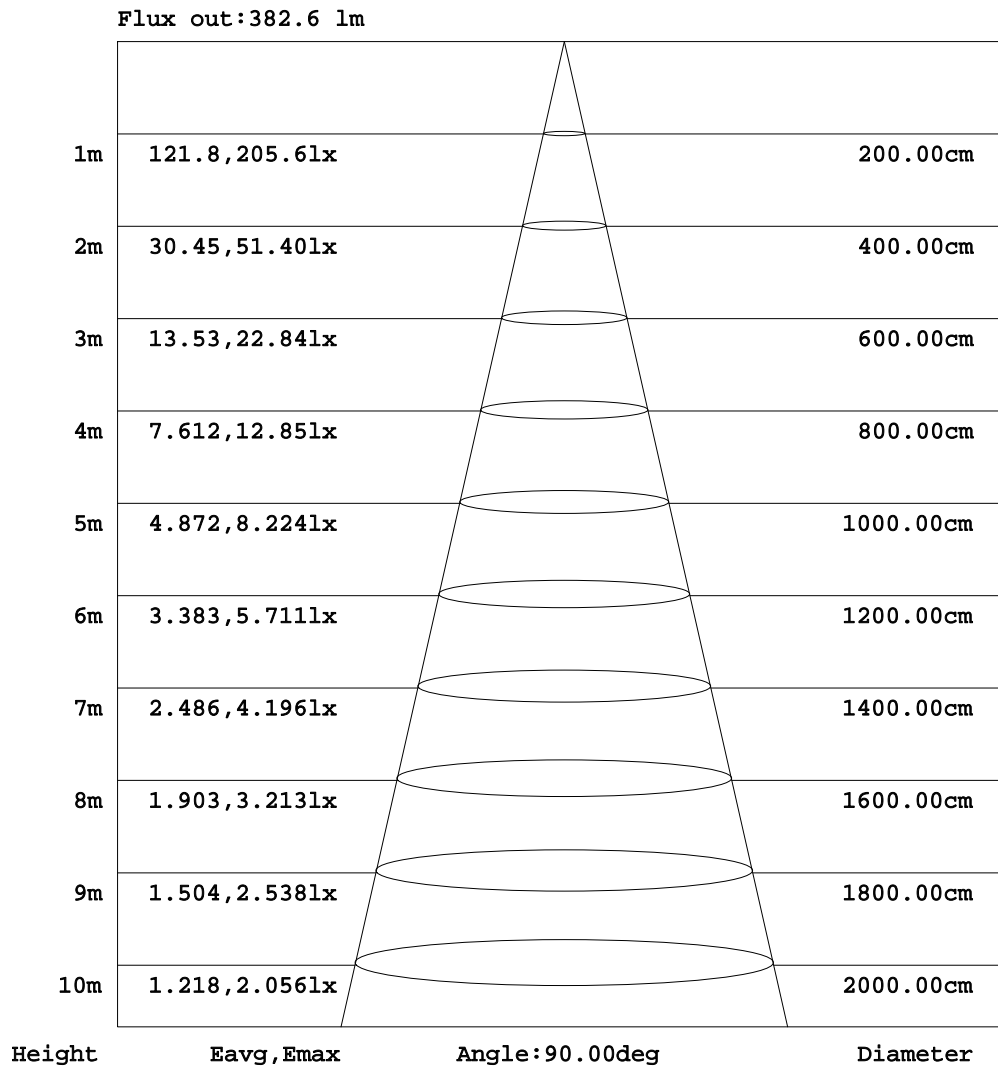


C Range: 0 - 360DEG  
 C Interval: 22.5DEG  
 Test Speed: HIGH  
 Temperature: 24.6DEG  
 Operators: LWQ  
 Test Date: 2019-01-29

γ Range: 0 - 180DEG  
 γ Interval: 0.5DEG  
 Test System: EVERFINE GO-R5000\_V2 SYSTEM V2.0.363T  
 Humidity: 37%  
 Test Distance: 1.509m [K=1.0000]  
 Remarks:

**AAI Figure**

Test:U:230.0V I:0.1090A P:13.19W PF:0.5261 Freq:50.01Hz Lamp Flux:1624.02x1 lm		
NAME:	TYPE:	WEIGHT:
SPEC.:A1521ST 14.5W 40K	DIM.:	SERIAL No.:A1901415B001
MFR.: EVERFINE	SUR.:	Shielding Angle:



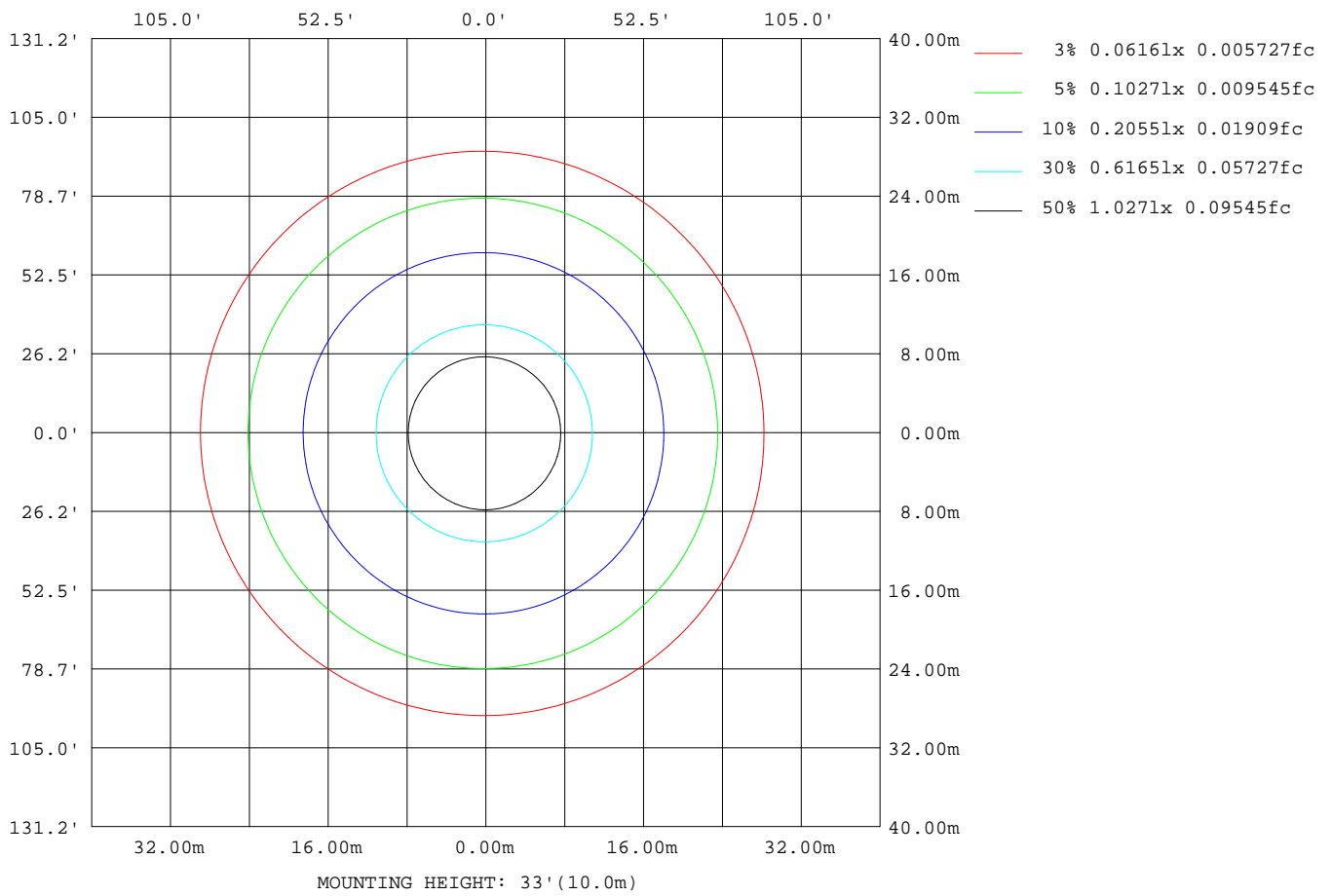
Note:The Curves indicate the illuminated area and the average illumination when the luminaire is at different distance.

C Range: 0 - 360DEG  
 C Interval: 22.5DEG  
 Test Speed: HIGH  
 Temperature:24.6DEG  
 Operators:LWQ  
 Test Date:2019-01-29

γ Range: 0 - 180DEG  
 γ Interval: 0.5DEG  
 Test System:EVERFINE GO-R5000\_V2 SYSTEM V2.0.363T  
 Humidity:37%  
 Test Distance:1.509m [K=1.0000]  
 Remarks:

**ISOLUX DIAGRAM**

Test:U:230.0V I:0.1090A P:13.19W PF:0.5261 Freq:50.01Hz Lamp Flux:1624.02x1 lm		
NAME:	TYPE:	WEIGHT:
SPEC.:A1521ST 14.5W 40K	DIM.:	SERIAL No.:A1901415B001
MFR.: EVERFINE	SUR.:	Shielding Angle:



C Range: 0 - 360DEG  
 C Interval: 22.5DEG  
 Test Speed: HIGH  
 Temperature:24.6DEG  
 Operators:LWQ  
 Test Date:2019-01-29

$\gamma$  Range: 0 - 180DEG  
 $\gamma$  Interval: 0.5DEG  
 Test System:EVERFINE GO-R5000\_V2 SYSTEM V2.0.363T  
 Humidity:37%  
 Test Distance:1.509m [K=1.0000]  
 Remarks:

LED Avg.L Report

Test:U:230.0V I:0.1090A P:13.19W PF:0.5261 Freq:50.01Hz Lamp Flux:1624.02x1 lm		
NAME:	TYPE:	WEIGHT:
SPEC.:A1521ST 14.5W 40K	DIM.:	SERIAL No.:A1901415B001
MFR.: EVERFINE	SUR.:	Shielding Angle:

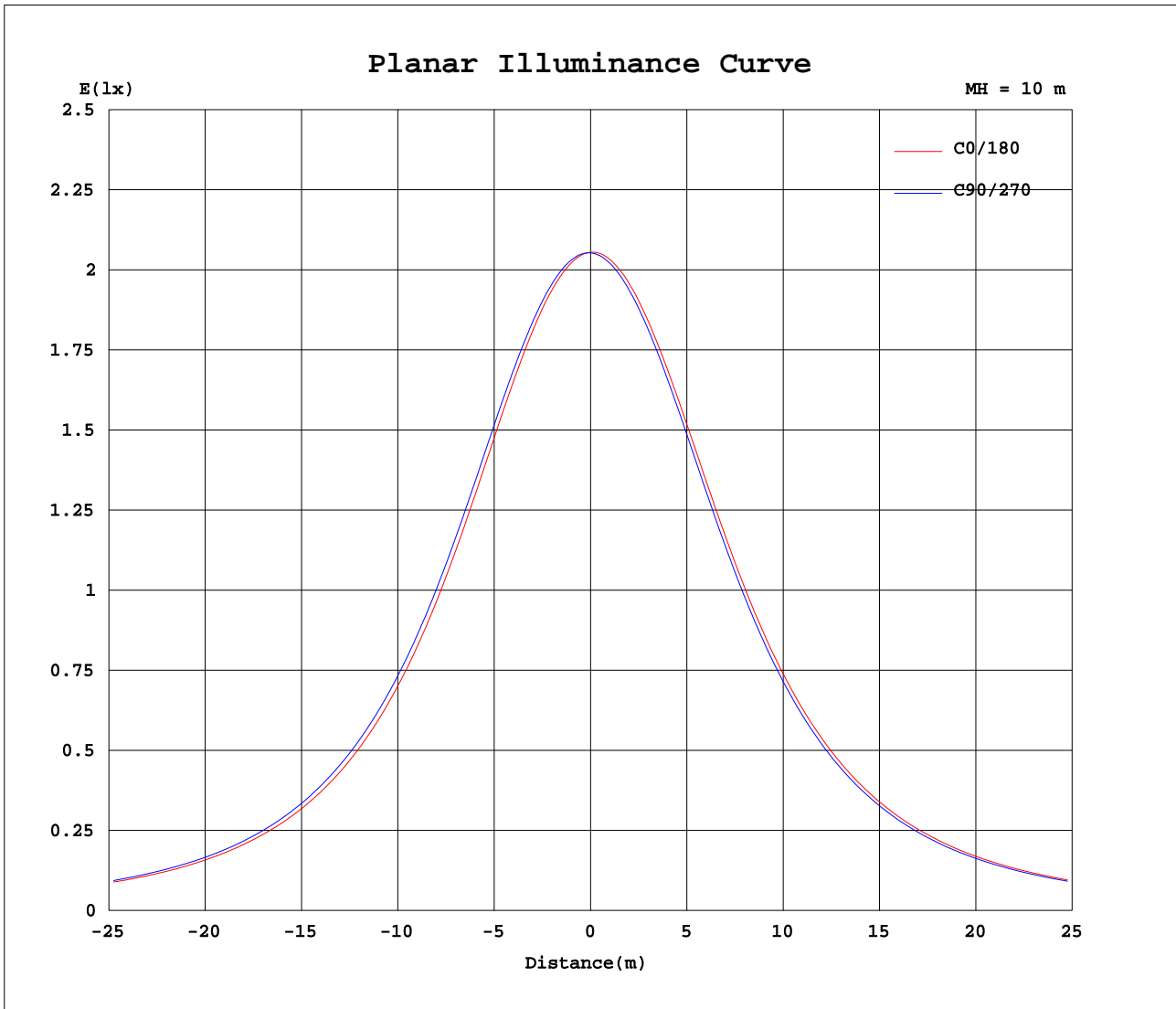
AvgL	cd/m2
L_0~180(65)av	79110
L_0~180(75)av	116999
L_0~180(85)av	306921
L_90~270(65)av	79679
L_90~270(75)av	117686
L_90~270(85)av	307935
L_45(65)av	79357
L_45(75)av	117262
L_45(85)av	307219

Standard: GB/T 29293-2012

C Range: 0 - 360DEG  
 C Interval: 22.5DEG  
 Test Speed: HIGH  
 Temperature:24.6DEG  
 Operators:LWQ  
 Test Date:2019-01-29

γ Range: 0 - 180DEG  
 γ Interval: 0.5DEG  
 Test System:EVERFINE GO-R5000\_V2 SYSTEM V2.0.363T  
 Humidity:37%  
 Test Distance:1.509m [K=1.0000]  
 Remarks:

Planar Illuminance Curve



C Range: 0 - 360DEG  
 C Interval: 22.5DEG  
 Test Speed: HIGH  
 Temperature: 24.6DEG  
 Operators: LWQ  
 Test Date: 2019-01-29

γ Range: 0 - 180DEG  
 γ Interval: 0.5DEG  
 Test System: EVERFINE GO-R5000\_V2 SYSTEM V2.0.363T  
 Humidity: 37%  
 Test Distance: 1.509m [K=1.0000]  
 Remarks:



LUMINOUS DISTRIBUTION INTENSITY DATA

Test:U:230.0V I:0.1090A P:13.19W PF:0.5261 Freq:50.01Hz Lamp Flux:1624.02x1 lm		
NAME:	TYPE:	WEIGHT:
SPEC.:A1521ST 14.5W 40K	DIM.:	SERIAL No.:A1901415B001
MFR.: EVERFINE	SUR.:	Shielding Angle:

Table--1

UNIT: cd

C(DEG)\ γ (DEG)	0	22.5	45	67.5	90	112.5	135	157.5	180	202.5	225	247.5	270	292.5	315	337.5			
0	205	205	205	205	205	205	205	205	205	205	205	205	205	205	205	205			
5	205	205	206	206	206	206	206	206	206	206	206	205	205	205	205	205			
10	205	206	206	207	207	208	208	208	207	207	206	206	206	205	205	205			
15	206	207	207	208	209	209	209	209	209	208	208	207	206	206	205	205			
20	206	207	208	210	210	211	211	211	210	210	209	208	207	206	206	206			
25	206	208	209	211	212	212	212	212	212	211	210	209	208	206	206	206			
30	206	207	209	211	212	213	213	213	213	212	211	209	208	206	205	205			
35	204	206	208	210	212	213	213	213	213	212	211	209	207	205	204	204			
40	202	204	206	209	210	211	211	211	211	211	209	208	205	203	202	201			
45	198	200	203	206	207	208	209	209	209	208	207	205	202	200	198	198			
50	194	196	199	201	203	204	205	205	205	205	203	201	198	196	194	193			
55	188	190	193	196	198	199	200	200	200	200	198	196	193	191	188	188			
60	182	184	186	189	191	193	193	194	194	194	192	190	187	184	182	181			
65	174	176	179	182	184	185	186	186	187	186	185	183	180	177	175	174			
70	166	168	170	173	175	177	177	178	179	178	177	175	172	169	167	166			
75	157	159	161	164	166	167	168	169	170	169	168	166	163	160	158	157			
80	148	149	151	154	156	157	159	159	160	160	159	157	154	151	149	148			
85	138	139	141	144	146	147	148	149	151	150	149	147	144	142	140	139			
90	129	129	131	133	135	137	138	139	140	140	139	137	135	132	130	129			
95	119	119	121	123	125	127	128	129	130	130	129	127	125	122	120	119			
100	109	109	111	112	114	116	118	119	120	120	119	117	115	112	111	110			
105	99.4	99.7	101	102	104	106	108	109	110	110	109	107	105	103	101	100			
110	90.1	90.2	91.0	92.5	94.3	96.2	97.8	99.0	100	100	98.9	97.2	95.3	93.4	91.9	90.9			
115	81.0	81.0	81.7	83.1	84.9	86.7	88.4	89.6	90.8	90.6	89.5	87.9	86.0	84.3	82.8	81.9			
120	72.2	72.2	72.9	74.1	75.8	77.7	79.3	80.5	81.7	81.4	80.4	78.9	77.0	75.4	74.1	73.2			
125	63.9	63.8	64.4	65.6	67.2	69.0	70.6	71.8	72.9	72.7	71.7	70.2	68.5	67.0	65.7	64.8			
130	55.9	55.8	56.3	57.4	59.0	60.8	62.3	63.4	64.5	64.3	63.3	62.0	60.3	58.9	57.6	56.8			
135	48.3	48.3	48.8	49.8	51.3	53.0	54.5	55.5	56.5	56.3	55.4	54.1	52.6	51.2	50.0	49.2			
140	41.3	41.3	41.7	42.6	44.0	45.6	47.1	48.1	49.0	48.7	48.0	46.8	45.4	44.0	42.8	42.1			
145	34.8	34.8	35.1	36.0	37.3	38.8	40.2	41.1	41.9	41.7	41.0	39.2	38.0	37.3	36.2	35.5			
150	28.9	28.9	29.2	30.0	31.1	32.6	33.8	34.6	35.3	35.2	34.3	31.3	28.3	29.5	30.0	29.5			
155	23.4	23.3	23.7	24.5	25.6	26.9	28.0	28.8	29.3	29.2	27.8	24.8	16.6	19.9	20.9	23.5			
160	18.2	17.8	18.6	19.3	20.1	21.5	22.5	23.3	23.8	23.7	21.9	19.3	17.2	20.9	19.8	11.3			
165	12.8	12.0	13.2	14.0	14.0	16.1	17.1	17.8	18.0	17.8	16.3	14.4	15.3	15.7	14.5	13.8			
170	5.48	5.72	3.37	4.48	7.35	9.85	10.9	11.7	11.4	11.4	10.6	9.30	10.6	9.83	8.10	7.25			
175	0.34	0.34	0.34	0.34	0.34	0.37	0.97	0.49	1.52	1.63	0.86	0.78	0.34	0.30	0.29	0.29			
180	0.32	0.32	0.33	0.33	0.33	0.32	0.32	0.32	0.32	0.32	0.32	0.33	0.33	0.33	0.32	0.32			

C Range: 0 - 360DEG  
 C Interval: 22.5DEG  
 Test Speed: HIGH  
 Temperature:24.6DEG  
 Operators:LWQ  
 Test Date:2019-01-29

γ Range: 0 - 180DEG  
 γ Interval: 0.5DEG  
 Test System:EVERFINE GO-R5000\_V2 SYSTEM V2.0.363T  
 Humidity:37%  
 Test Distance:1.509m [K=1.0000]  
 Remarks: