

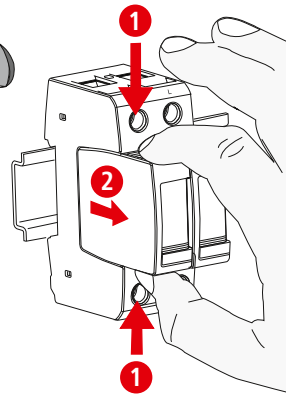
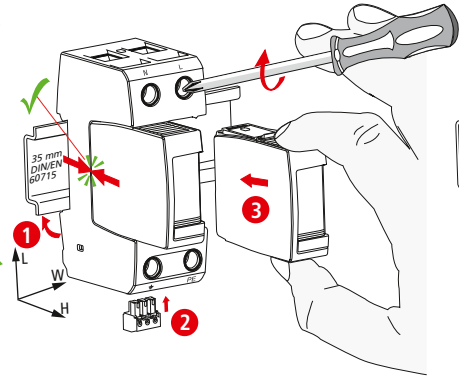
DEHNguard modular DG M TN 275 NL (FM)

- DE Einbauanleitung
- GB Installation instructions
- IT Istruzioni di montaggio
- FR Instructions de montage
- NL Montagehandleiding
- ES Instrucciones de montaje
- PT Instruções de montagem
- DK Monteringsvejledning
- SE Monteringsanvisning
- FI Asennusohje
- GR Οδηγίες συναρμολόγησης
- PL Instrukcja montażu
- CZ Montážní návod
- TR Kurulum Talimatları
- RU Инструкция по монтажу
- CN 安装说明
- HU Szerelési útmutató
- JP 設置説明書

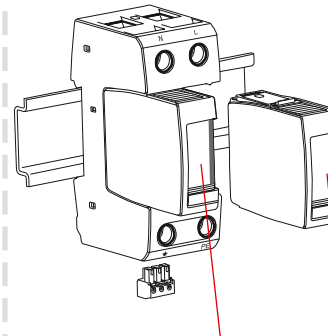


II IEC 61643-11...
2 EN 61643-11...

PZ 2 (4 Nm)



DG M TT 2P 275 NL (FM)



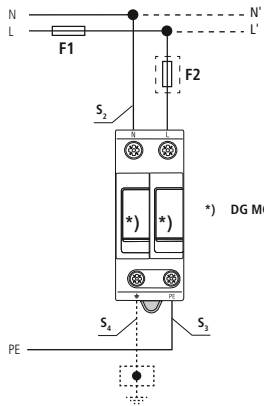
DG MOD NPE

DG MOD 275

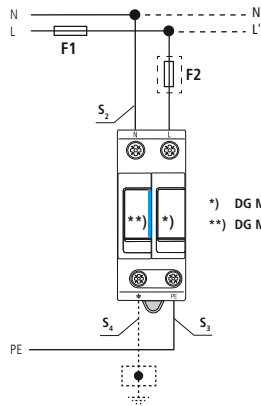
	DG M TN 275 NL (FM)	DG M TT 2P 275 NL (FM)	
		L - N	N-PE
		DG MOD 275	DG MOD NPE
U_c	275 V~		255 V~
$U_N / \text{Tol.: } \pm 10\%$		230 / 400 V	
f_N		50 / 60 Hz	
I_{SCCR}	50 kA _{rms}		---
max.	125 A gG		---
I_{fi}	---		100 A _{rms}
I_{PE}	< 0.5 mA		< 5 μ A
I_{max}	40 kA (8/20)		
θ	- 40°C ... + 80°C		
ϕ	5% ... 95%		
IP 1)	20		
L x W x H	90 mm x 36 mm x 73 mm		

TN (-C) -S DG M TN 275 NL (FM)

TT DG M TT 2P 275 NL (FM)



*) DG MOD 275



*) DG MOD 275
**) DG MOD NPE

DEHNguard modular
DG M TN 275 NL (FM),
DG M TT 2P 275 NL (FM)

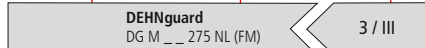
F1	$F1 \leq 125 \text{ A gG}$		$F2 \leq 125 \text{ A gG}$
F2	$F1 > 125 \text{ A gG}$		$F2 \leq 125 \text{ A gG}$

DEHNguard modular
DG M TN 275 NL (FM),
DG M TT 2P 275 NL (FM)

F1 A gG	S ₂ / mm ²	S ₃ / mm ²	S ₄ / mm ²	F2 A gG
25	4	6	6	---
35	4	6	6	---
40	4	6	6	---
50	6	6	6	---
63	10	10	10	---
80	10	10	10	---
100	16	16	16	---
125	16	16	16	---
> 125	16	16	16	125

min. L, N, PE,	12 mm	12 mm	12 mm
	1.5 mm ²		
max. L, N, PE,	25 mm ²	35 mm ²	
	16 mm ² Cu	$\geq 15.5 \text{ mm}$	

LPZ 0_A | LPZ 0_B | LPZ 1 | LPZ 2 | LPZ 3



DEHNguard modular
DG M TN 275 NL FM, DG M TT 2P 275 NL FM

U_N / I_N

AC:	250 V / 0.5 A
DC:	250 V / 0.1 A 125 V / 0.2 A 75 V / 0.5 A

0.2 Nm

max. 1.5 mm²

