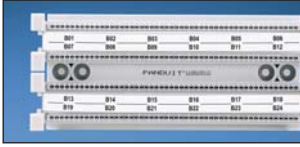


Component Labels for Pan-Punch® 110 Category 5e Tower Systems



Suggested Label Solutions for TIA/EIA-606-A Compliance				
Punchdown System Part Number	Laser/Ink Desktop Printer Label	TDP43ME Thermal Transfer Desktop Printer Label	PanTher™ LS8E Hand-Held Printer Label	Cougar™ LS9 Hand-Held Printer Label
All Pan-Punch® Tower Kits	C750X050Y1J	C750X050Y1T	C750X050Y1C	T050X000VPC-BK‡

For complete labeling solutions and product information, reference charts on pages O.1 – O.22.

‡For non-adhesive labeling solution, do not remove liner from label.



Vertical Cable Managers for Tower Systems

- Finger design allows for easy changes
- Can be mounted between towers
- Compatible with GP6™ PLUS or 110 Tower Systems
- Designed for wall mount or 19" rack mount applications
- Facilitates vertical cable management
- Rugged all metal construction



Part Number	Part Description	Color	Std. Pkg. Qty.
Vertical Cable Manager for use with 300-Pair Tower System			
P110VCM300	Mounts adjacent to 300-pair tower system.	Black	1
Vertical Cable Manager for use with Backboard Mounting			
P110VCM	Mounts to plywood backboard and adjacent to bases and jumper troughs. White metal backboard and large D-rings, designed for wall mount vertical or horizontal cable management.	White	1
Vertical Cable Manager for use with 900-Pair Tower System			
P110VCM900	Mounts adjacent to 900-pair tower system.	Black	1

110 Punchdown Label Holder

- Use with adhesive or non-adhesive designation labels



Part Number	Part Description	Std. Pkg. Qty.	Std. Ctn. Qty.
P110LH	Label holder snaps into 110 and GP6™ Bases.	6	60