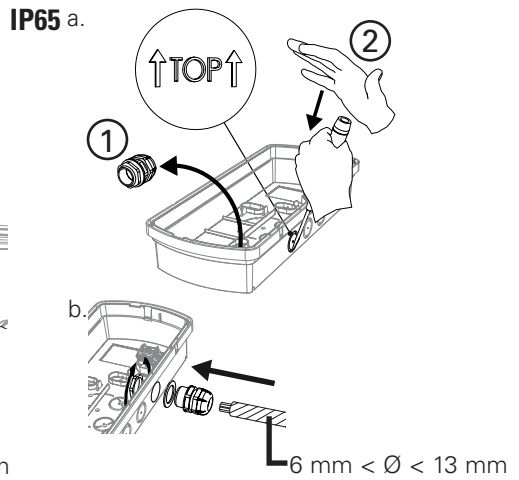
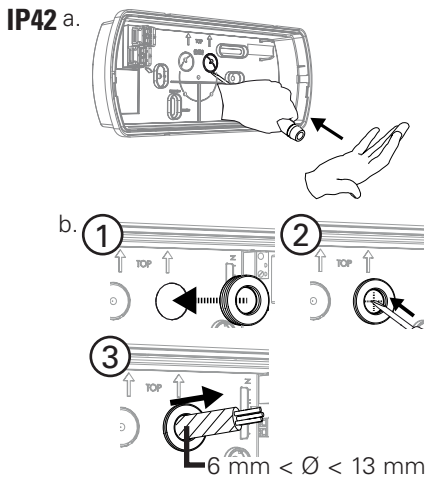
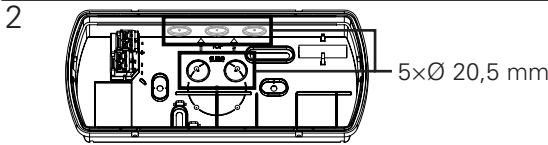
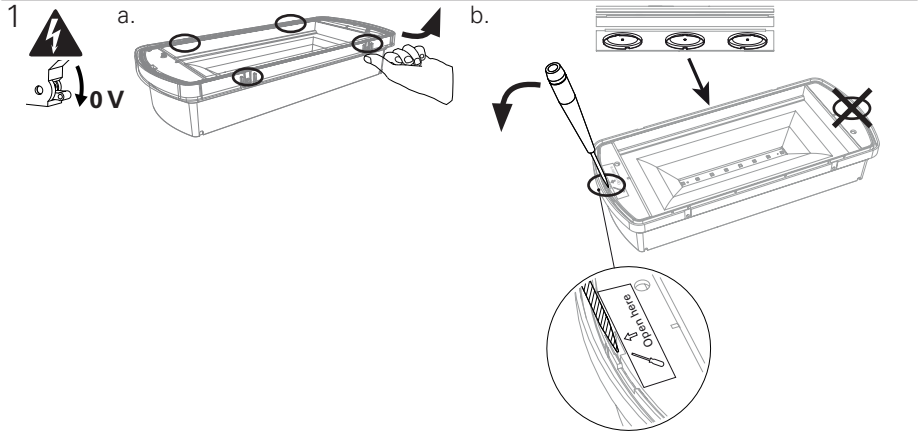
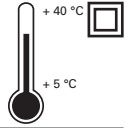
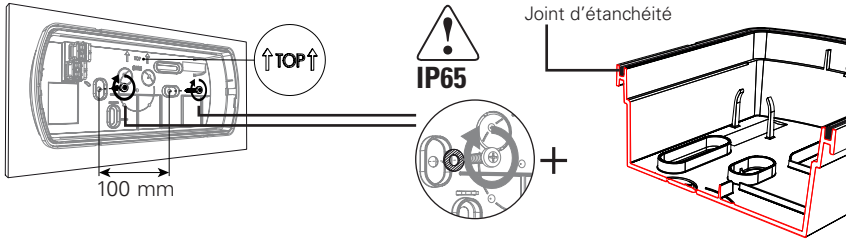


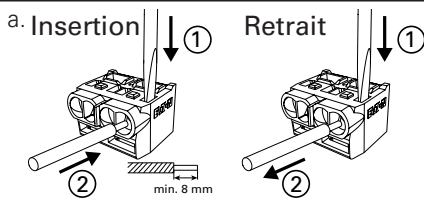
STD 2-8 & STD 2-8 ES



3

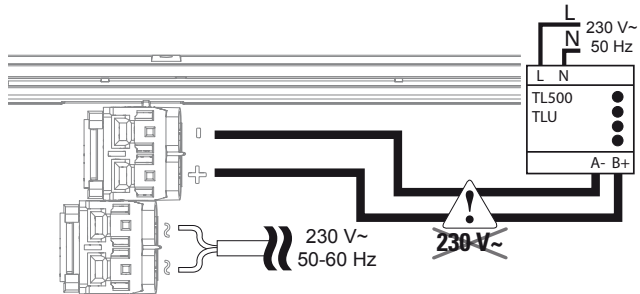


4



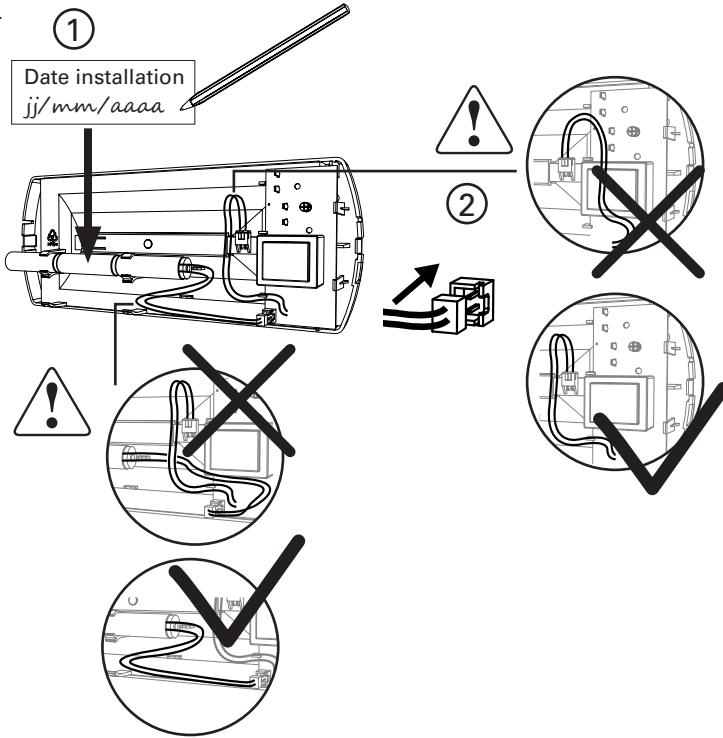
Fil rigide ou souple
 $0,5 < S < 2,5 \text{ mm}^2$

Si fil rigide
 $1,5 < S < 2,5 \text{ mm}^2$

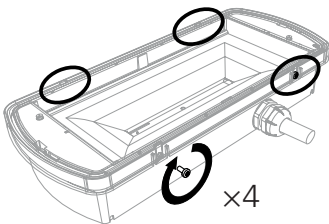
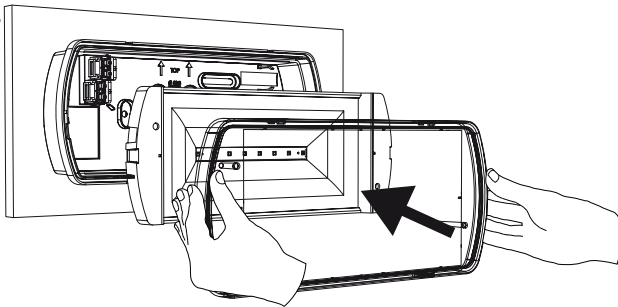


Voir manuel
 TLU
 LUM10312
 TL500
 LUM10313

4 b.

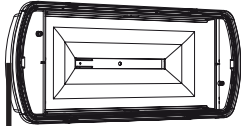
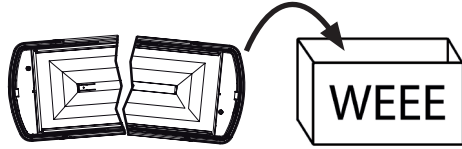
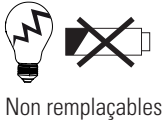


5 a.



b.  230 V~





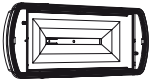
EATON
LUM1024x
STD 2-x
X1 ABEG 300 8 lm
230 Vac 50/60 Hz
NiCd 3.6 V 0.8 Ah

COOPER SECURITE SAS
63204 RIOM - FRANCE
AA/SS
NF
AGAS

Date de fabrication

Permanent

Flux lumineux
Autonomie batterie (min)



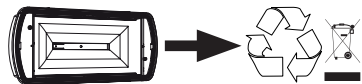
NF



EN

FR

STD 2-8	LUM10244	IP 42 / IK 07	xxxxx	NiCd 3x1,2 V/0,8 Ah AA Ronda	5 h	8 lm	230 Vac 50/60 Hz	EN 60598:1 EN 60598:2,22	NFC71805
STD 2-8 ES	LUM10246	IP 65 / IK 10	xxxxx			8 x LED 2,6 V 1,8 mA			



Eaton
EMEA Headquarters
Route de la Longeraie 7
1110 Morges, Switzerland
Eaton.eu

ZNO2038400 A - 01/2017

© 2017 Eaton
Tous droits réservés

Eaton est une marque déposée.

Toutes les autres marques
appartiennent à leurs propriétaires
respectifs.



EATON

Powering Business Worldwide