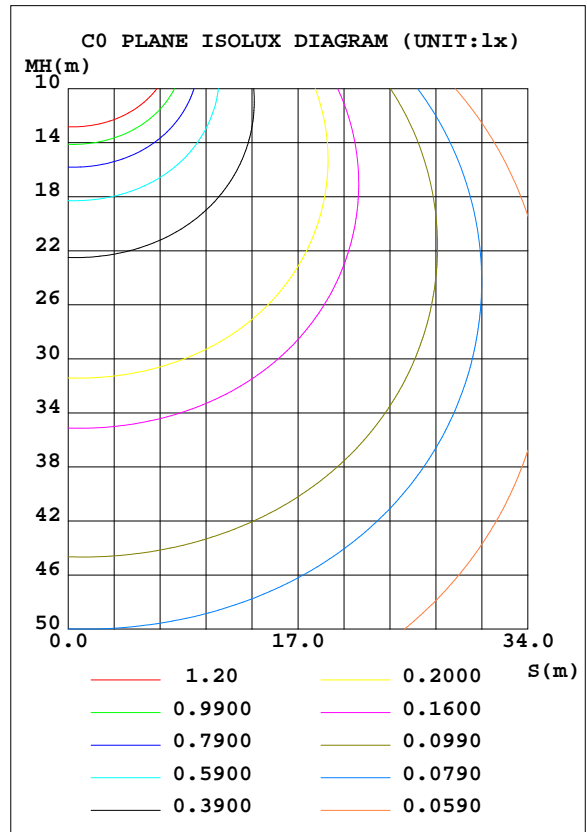
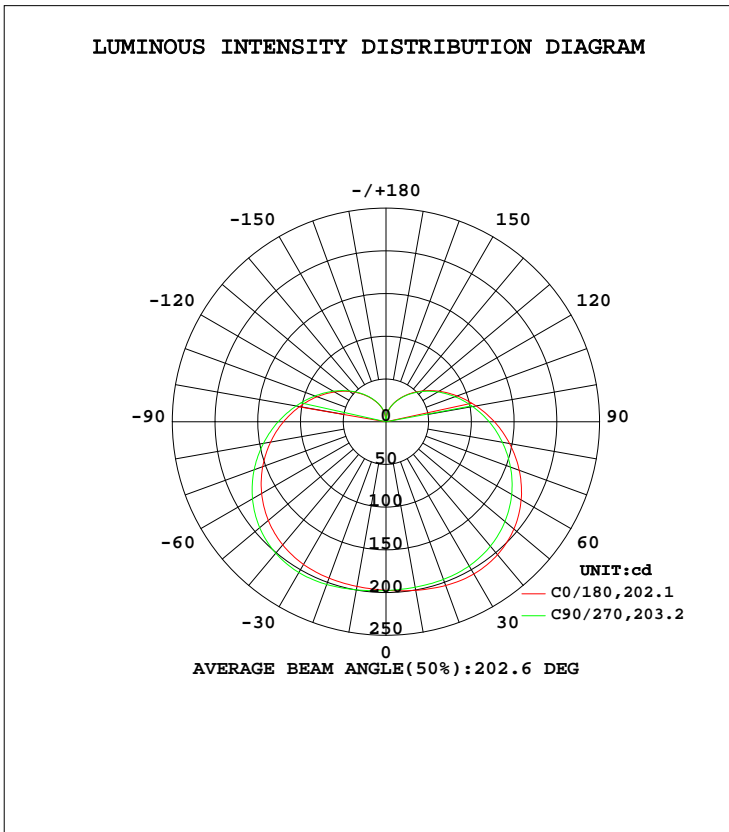


EVERFINE GONIOPHOTOMETERS SYSTEM TEST REPORT

LUMINAIRE PHOTOMETRIC TEST REPORT

Test:U:240.0V I:0.1080A P:13.61W PF:0.5250 Freq:49.99Hz Lamp Flux:1513.24x1 lm		
NAME: 9aSA-A1521ST-Q1-03	TYPE:LED	WEIGHT:
SPEC.:9aSA-A1521ST-Q1-03 240V50HZ	DIM.:	SERIAL No.:C2031647A001
MFR.: EVERFINE	SUR.:	Shielding Angle:

DATA OF LAMP		PHOTOMETRIC DATA Eff: 111.18 lm/W			
MODEL		I _{max} (cd)	205.8	S/MH(C0/180)	1.49
NOMINAL POWER(W)	13.2	LOR(%)	100.0	S/MH(C90/270)	1.56
RATED VOLTAGE(V)	240	TOTAL FLUX(lm)	1513.2	η UP, DN(C0-180)	14.5, 35.7
NOMINAL FLUX(lm)	1513.24	CIE CLASS	SEMI-D.	η UP, DN(C180-360)	14.5, 35.3
LAMPS INSIDE	1	η up(%)	29.0	CIBSE SHR NOM	1.75
TEST VOLTAGE(V)	240	η down(%)	71.0	CIBSE SHR MAX	1.75



C Range: 0 - 360DEG
 C Interval: 90.0DEG
 Test Speed: HIGH
 Temperature:25.3DEG
 Operators:肖春梅
 Test Date:2020-08-07

γ Range: 0 - 180DEG
 γ Interval: 1.0DEG
 Test System:EVERFINE GO-SPEX500_V1 SYSTEM V2.0.363T
 Humidity:65.0%
 Test Distance:4.950m [K=1.0000]
 Remarks: