

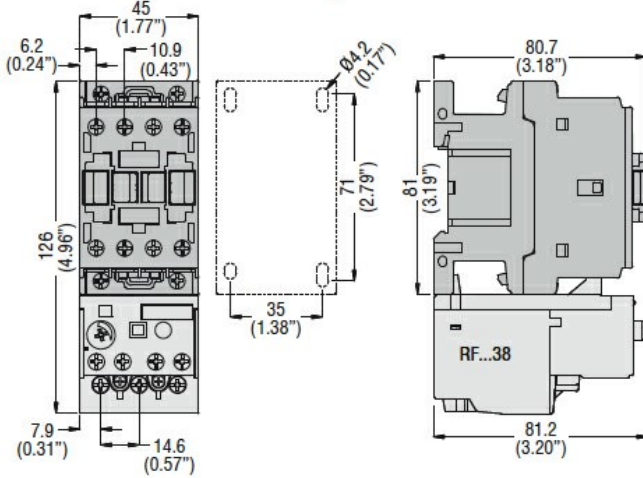


Product designation	RFN38		
Product type designation	Motor protection relay		
<b>General characteristics</b>			
Number of poles	Nr.	3	
Overvoltage category	III		
Pollution degree	3		
Frontal IP degree	IP20		
Type of release	Thermal		
Protection fuse	aM (IEC)	A	0.5
	RK5 (UL)	A	1
Phase failure detection	no		
Reset mode	Manual or automatic		
<b>Power circuit characteristics</b>			
Rated insulation voltage $U_i$ IEC/EN	V	690	
Rated impulse withstand voltage $U_{imp}$	kV	6	
Rated operational voltage	V	690	
Operational frequency	min	Hz	0
	max	Hz	400
Operational current $I_e$	Operational current min	A	0.16
	Operational current max	A	0.25
Tripping class	10A		
Test Button	yes		
Trip indicator	yes		
Terminals	type	screw and washer	
	screw	M4	
	width	mm	12.6
	tool	Phillips 2	
Tightening torque for terminals	min	Nm	2
	max	Nm	2.5
	min	lbin	1.5
	max	lbin	1.8
Conductor section	AWG/kcmil max	8	
<b>Auxiliary circuit characteristics</b>			
Auxiliary contacts	NO	Nr.	1
	NC	Nr.	1

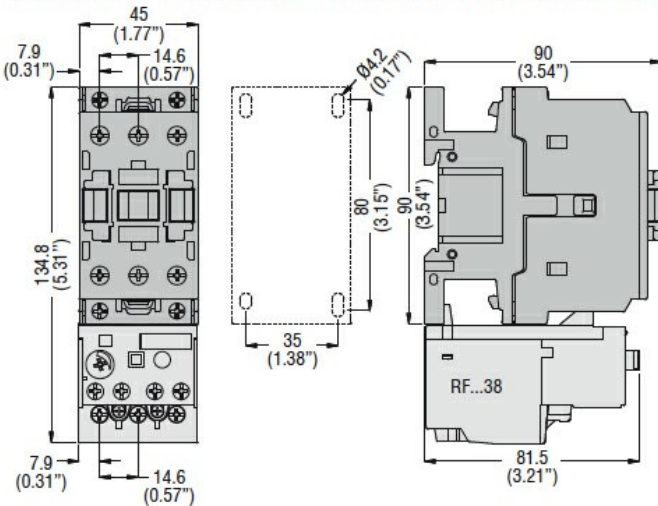
Auxiliary Rated insulation voltage $U_i$ IEC/EN	V	690
Auxiliary Rated impulse withstand voltage $U_{imp}$	kV	6
Auxiliary Rated operational voltage	V	690
Operating current AC15		
	24V	A 3
	120V	A 3
	240V	A 1.5
	380V	A 0.95
	480V	A 0.75
	500V	A 0.72
	600V	A 0.6
Operating current DC13		
	125V	A 0.11
	600V	A 0.22
IEC Conventional free air thermal current $I_{th}$	A	10
Terminals		
	Auxiliary circuit type	screw and washer
	Auxiliary circuit screw	M3,5
	Auxiliary circuit width	mm 8
	Auxiliary circuit tool	Phillips 2
Conductor section		
	Auxiliary circuit Flexible w/o lug max	mm <sup>2</sup> 2.5
	Auxiliary circuit Flexible c/w lug max	mm <sup>2</sup> 2.5
Tightening torque for terminals		
	Auxiliary circuit min	Nm 0.8
	Auxiliary circuit max	Nm 1
	Auxiliary circuit min	Ibin 0.59
	Auxiliary circuit max	Ibin 0.74
UL/CSA and IEC/EN 60947-5-1 designation		B600-R300
<b>Ambient conditions</b>		
Operating temperature		
	min	°C -25
	max	°C 60
Storage temperature		
	min	°C -50
	max	°C 70
Compensation temperature		
	min	°C -20
	max	°C 60
Max altitude	m	3000
<b>Mechanical features</b>		
Operating position		
	normal allowable	Vertical plan ±30°
Fixing		Direct mounting on BF09... BF38...
Weight	g	160
<b>UL technical data</b>		
Full-load current (FLA) for three-phase AC motor		
	at 480V	A 0.25
	at 600V	A 0.25
<b>Dimensions</b>		

MOTOR PROTECTION RELAY, NON PHASE FAILURE/NON SINGLE-PHASE SENSITIVE.  
THREE-POLE (THREE-PHASE), MANUAL OR AUTOMATIC RESETTING. DIRECT MOUNTING  
ON BF09 - BF38 CONTACTORS, 0.16...0.25A

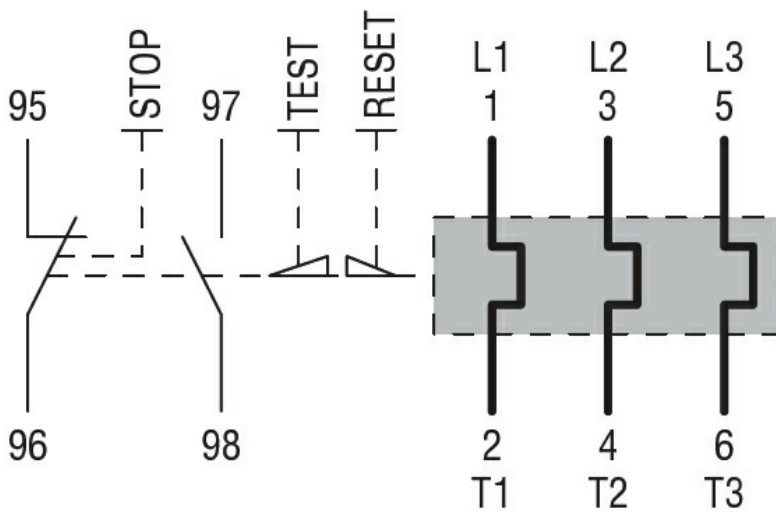
**BF00 A... BF09 A... - BF12 A... - BF18 A... - BF25 A...** three poles with  
**RF...38** thermal overload relay



**BF26 00A... - BF32 00A... - BF38 00A...** three poles with **RF...38** thermal overload relay



**Wiring diagrams**



**Certifications and compliance**

Compliance

CSA C22.2 n° 14

IEC/EN 60947-1

IEC/EN 60947-4-1

MOTOR PROTECTION RELAY, NON PHASE FAILURE/NON SINGLE-PHASE SENSITIVE.  
THREE-POLE (THREE-PHASE), MANUAL OR AUTOMATIC RESETTING. DIRECT MOUNTING  
ON BF09 - BF38 CONTACTORS, 0.16...0.25A

---

UL508

---

Certifications

CCC

---

cULus

---

EAC

---

ETIM classification

ETIM 8.0

EC000106 -  
Thermal overload  
relay