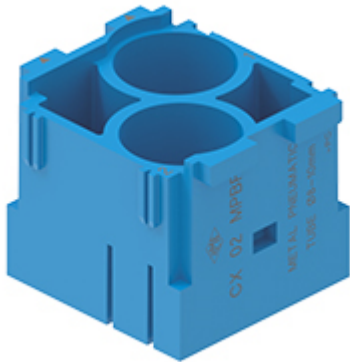


Part number

# CX 02 MPBF



Female modular insert, Mixo series, for pneumatic contacts, 2 modules, with 2 seats for tube diameter 8,0-10 mm

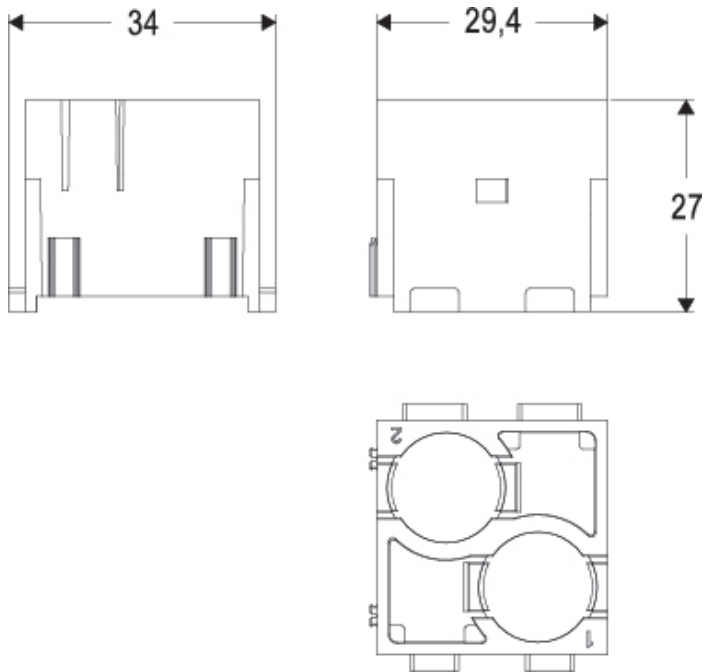
Product description		Material properties	
<b>Product type</b>	Modular insert	<b>Main material</b>	Polycarbonate (PC)
<b>Series</b>	Mixo	<b>Colour</b>	RAL 5015 blue
<b>Connection type</b>	Pneumatic	<b>RoHs conformity</b>	Compliant
<b>Gender</b>		<b>China RoHs - EFUP</b>	E
<b>N. of poles</b>	2 poles	<b>REACH SVHC substances</b>	No
<b>Size</b>	2 modules	<b>General ordering information</b>	
<b>Specification</b>	With 2 seats for tube diameter 8,0-10 mm	<b>EAN13 code</b>	8015747193320
<b>Further technical details</b>		<b>eCl@ss 8.1</b>	27440205
<b>Mating cycles</b>	≥ 500   ≥ 10.000 (HNM MIXO frames and enclosures)	<b>ETIM 7.0</b>	EC000438
<b>Insulation resistance</b>	≥ 10 GΩ	<b>Packaging Information</b>	
<b>Weight</b>	9,00 g	<b>Packaging length</b>	350,00 mm
<b>Operating temperature range (min, max)</b>	-40°C ... +80°C	<b>Packaging height</b>	105,00 mm
<b>UL 94 flammability rating</b>	V-0	<b>Packaging width</b>	145,00 mm
		<b>Packaging weight</b>	0,84 kg
		<b>Packaging volume</b>	5,33 dm <sup>3</sup>
		<b>Packaging description</b>	Carton box
		<b>Packaging quantity</b>	60 Pcs
		<b>Packaging EAN code</b>	8015747193344
		<b>Sub-packaging length</b>	35,00 mm
		<b>Sub-packaging height</b>	40,00 mm
		<b>Sub-packaging width</b>	155,00 mm
		<b>Sub-packaging weight</b>	0,07 kg
		<b>Sub-packaging volume</b>	0,22 dm <sup>3</sup>
		<b>Sub-packaging description</b>	Carton tray
		<b>Sub-packaging quantity</b>	5 Pcs
		<b>Sub-packaging EAN barcode</b>	8015747193368

Part number

# CX 02 MPBF



## Catalogue drawings



---

Notes