

1SNA115206R2200 ✓ ACTIVE

ENTRELEC | ENTRELEC SNA

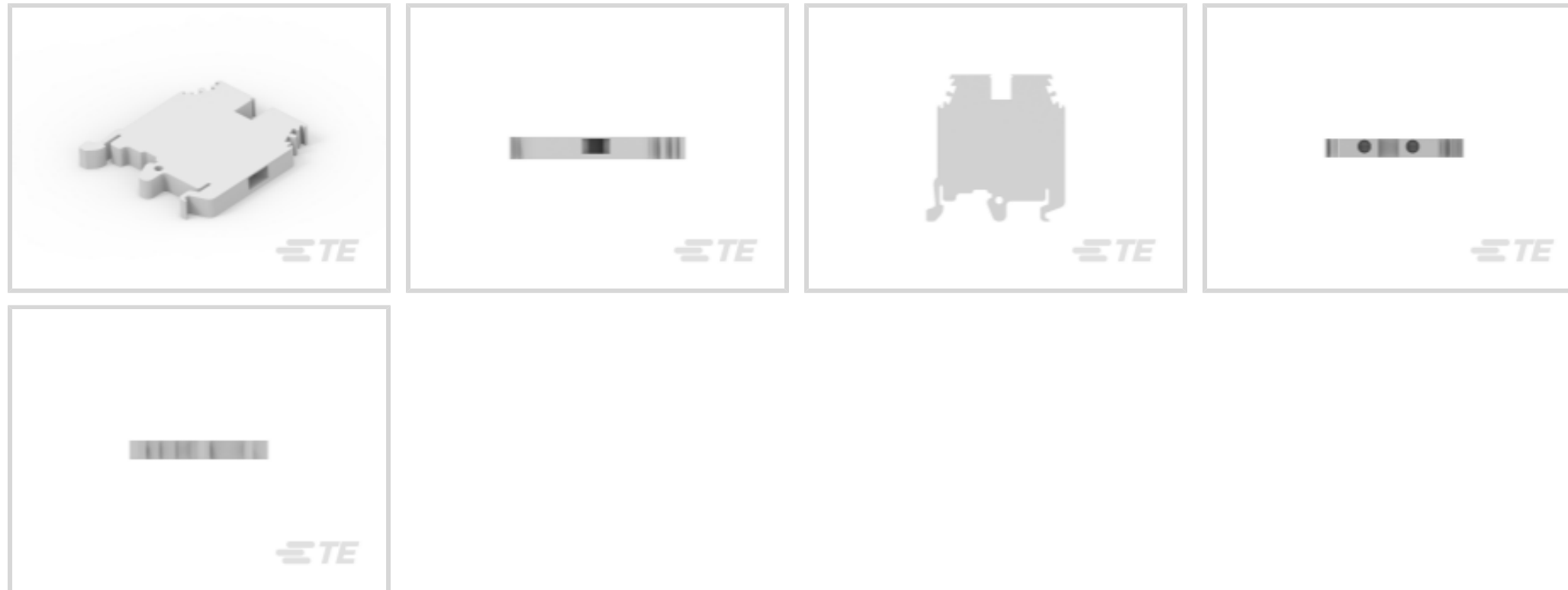
TE Internal #: 1SNA115206R2200

Modular Terminal Blocks, Feed-Through, Screw Clamp Terminal Block, Gray, Product Spacing .236 in [6 mm], 2 Position, Screw Terminal, ENTRELEC SNA

[View on TE.com >](#)



Connectors > Terminal Blocks & Strips > Modular Terminal Blocks



Block Function: **Feed-Through**

Modular Terminal Block Product Type: **Screw Clamp Terminal Block**

Rated Cross Section: **1.5 mm²**

Primary Product Color: **Gray**

Features

Product Type Features

Modular Terminal Block Product Type	Screw Clamp Terminal Block
Sealable	No

Configuration Features

Number of Levels	1
Block Function	Feed-Through
Number of Positions	2

Electrical Characteristics

Current Rating (NFC)	500 A
Current Rating (DIN)	500 A
Voltage Rating	500 VAC

Body Features

Product Weight	20 g [.705 oz]
Primary Product Color	Gray

Termination Features



Termination Method to Wire & Cable	Screw Terminal
------------------------------------	----------------

Mechanical Attachment

Tightening Torque	5.3 in-lbs
DIN Rail Mounting Type	G32, TH35-15, TH35-7.5
Connector Mounting Type	DIN Rail

Housing Features

Housing Material	Polyamide
------------------	-----------

Dimensions

Wire Stripping Length	31 mm[1.22 in]
Product Depth	40.5 mm[1.594 in]
Product Width	6 mm[.236 in]
Product Length	40.5 mm[1.594 in]
Product Height	44.5 mm[1.751 in]
Rated Cross Section	1.5 mm ²
Product Spacing	6 mm[.236 in]
Wire Size	.9 – 1.5 mm ²

Usage Conditions

Storage Temperature Range	-55 – 110 °C[-67 – 230 °F]
Operating Temperature Range	-55 – 110 °C[-67 – 230 °F]

Operation/Application

Circuit Application	Signal
---------------------	--------

Industry Standards

UL Flammability Rating	UL 94V-0
------------------------	----------

Product Compliance

[For compliance documentation, visit the product page on TE.com>](#)

EU RoHS Directive 2011/65/EU	Compliant with Exemptions
EU ELV Directive 2000/53/EC	Compliant with Exemptions
China RoHS 2 Directive MIIT Order No 32, 2016	Restricted Materials Above Threshold
EU REACH Regulation (EC) No. 1907/2006	Current ECHA Candidate List: JUNE 2022 (224) Candidate List Declared Against: JUNE 2022 (224)



SVHC > Threshold:

Pb (3.7% in Component Part)

Article Safe Usage Statements:

Do not eat, drink or smoke when using this product. Wash thoroughly after handling. Recycle if possible and dispose of the article by following all applicable governmental regulations relevant to your geographic location.

Halogen Content

BFR/CFR/PVC Free, but Br/Cl >900 ppm in other sources.

Solder Process Capability

Not reviewed for solder process capability

Product Compliance Disclaimer

This information is provided based on reasonable inquiry of our suppliers and represents our current actual knowledge based on the information they provided. This information is subject to change. The part numbers that TE has identified as EU RoHS compliant have a maximum concentration of 0.1% by weight in homogenous materials for lead, hexavalent chromium, mercury, PBB, PBDE, DBP, BBP, DEHP, DIBP, and 0.01% for cadmium, or qualify for an exemption to these limits as defined in the Annexes of Directive 2011/65/EU (RoHS2). Finished electrical and electronic equipment products will be CE marked as required by Directive 2011/65/EU. Components may not be CE marked. Additionally, the part numbers that TE has identified as EU ELV compliant have a maximum concentration of 0.1% by weight in homogenous materials for lead, hexavalent chromium, and mercury, and 0.01% for cadmium, or qualify for an exemption to these limits as defined in the Annexes of Directive 2000/53/EC (ELV). Regarding the REACH Regulation, the information TE provides on SVHC in articles for this part number is based on the latest European Chemicals Agency (ECHA) 'Guidance on requirements for substances in articles' posted at this URL: <https://echa.europa.eu/guidance-documents/guidance-on-reach>

Compatible Parts




TE Part # 1SNA146227R2500
MTC6.EX




TE Part # 1SNA233000R0100
RC610



TE Part # 1SNA118368R1600
FEM6



TE Part # 1SNA178745R1400
CBM5

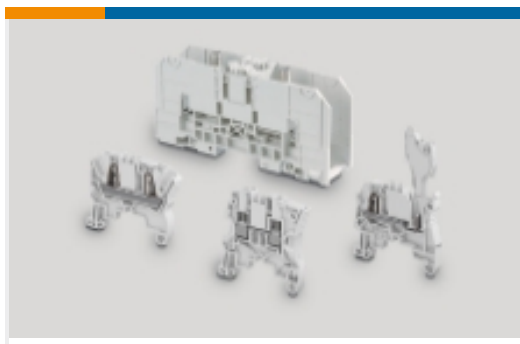


TE Part # 1SNA399903R0200
BADL

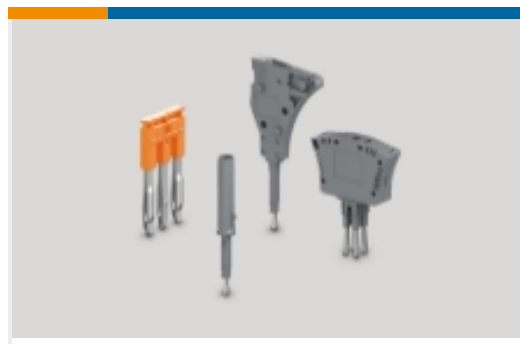


TE Part # 1SNA178746R1500
CBM8

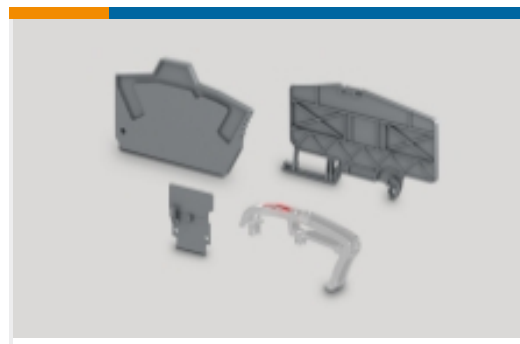
Also in the Series | **ENTRELEC SNA**



Modular Terminal Blocks(182)



Terminal Block & Strip Conducting Accessories(26)



Terminal Block & Strip Insulating Accessories(14)

Customers Also Bought



TE Part #1SNA115120R1700
M10/10



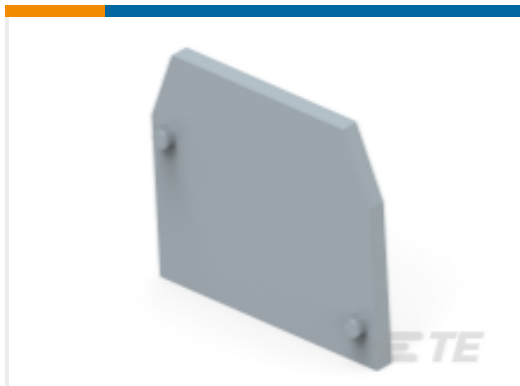
TE Part #1SNA115224R1300
M4/6.T



TE Part #1SNA115501R1200
M6/8.D2



TE Part #1SNA116576R1500
FEM3A



TE Part #1SNA118368R1600
FEM6



TE Part #1SNA176665R0200
BJMI6-4



TE Part #1SNA176679R1000
BJMI10-10



TE Part #1SNA113079R2300
PEB M1



TE Part #1SNA205171R0100
SFB.B2



TE Part #305956-8
ANVIL

Documents

CAD Files

[3D PDF](#)

[3D](#)

Customer View Model

[ENG_CVM_CVM_1SNA115206R2200_A.2d_dxf.zip](#)

English

Customer View Model

[ENG_CVM_CVM_1SNA115206R2200_A.3d_igs.zip](#)

1SNA115206R2200

Modular Terminal Blocks, Feed-Through, Screw Clamp Terminal Block, Gray, Product Spacing .236 in [6 mm], 2 Position, Screw Terminal, ENTRELEC SNA



English

Customer View Model

[ENG_CVM_CVM_1SNA115206R2200_A.3d_stp.zip](#)

English

By downloading the CAD file I accept and agree to the [Terms and Conditions](#) of use.

Datasheets & Catalog Pages

[ENTRELEC Terminal Block - Master Catalog](#)

English

[Entrelec-sensor-actuator](#)

English

[ENTRELEC Terminal Blocks Catalogue \(RUS\)](#)