

Eaton Green Motion DC 22 floor-mounted column

Accessory leaflet

Prior to installation it is required to download (www.eaton.com/greenmotiondc22), read, and understand the step-by-step instructions from the latest installation and user manuals.

Never turn on equipment when there is an evidence of fire or structural damage.

The Green Motion DC 22 column must be installed only by professional and qualified personnel.

Read and understand the safety instructions and warnings prior to installation.

1. Technical specifications

Technical disclaimer

All drawings, descriptions or illustrations contained in this document serve to provide a clear overview and/or technical explanation of the present product and its various components and accessories.

In line with our goal to continuously improve the products and the customer service we provide, all specifications contained in this document are subject to change without notice.

Dimensions and weight

The table below shows the dimensions and weight of the Green Motion DC 22 floor-mounted column.

Table 1. Dimensions and weight of the Eaton Green Motion DC 22 floor-mounted column

Green Motion DC 22 Accessory – Floor-mounted column	
Dimensions (H x W x D) in mm	1080 x 540 x 200
Weight in kg	32
Installation method	Floor-mounted

Figure 1. Green Motion DC 22 EV charger floor-mounted column, front and side views with dimensions

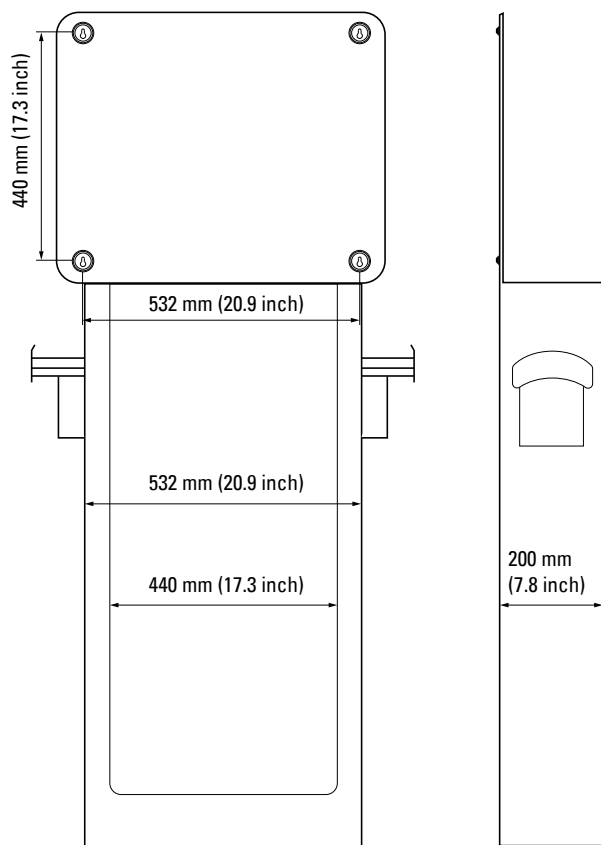
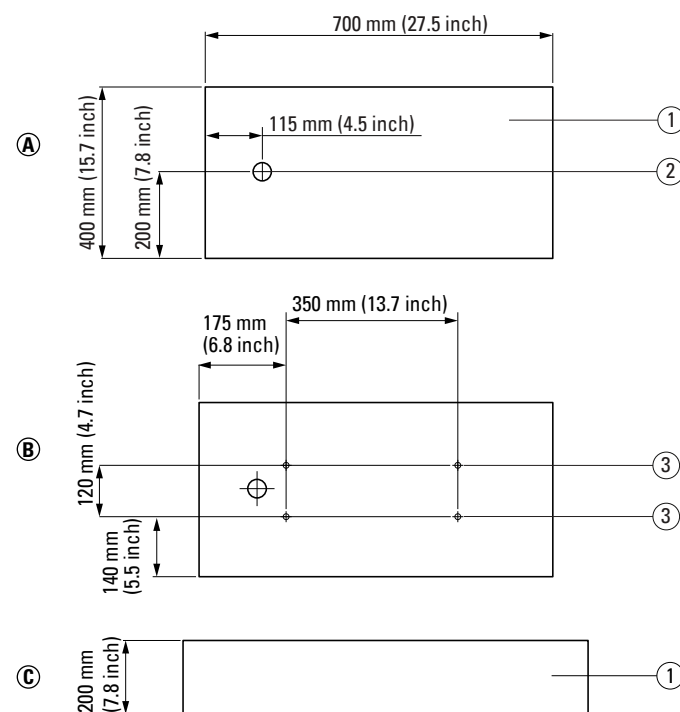


Figure 2. Bottom, top and front views of the concrete base for the EV charger column with dimensions



Tag	Description
①	Concrete base
②	40 mm throughput for electrical cables
③	M10 stainless steel threaded rods
A	Bottom view of the concrete base
B	Top view of the concrete base
C	Front view of the concrete base

2. Installation method

Tools required for the installation

To perform the installation, the installer should have the following tools:

- Screwdriver
- Open-ended wrenches
- Drilling machine

Mounting

Prepare a concrete base for the column as shown in Figure 2 using the following instructions:

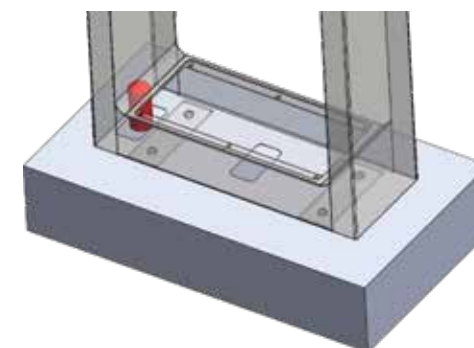
- Dimensions of concrete base: 400 mm x 700 mm x 150 mm.
- Place 4 x M10 stainless steel threaded rods in the concrete base.
- Leave a 40-mm throughput for the power and communication cable of the EV charger.

Bolt the floor-mounted column to the 4 stainless steel threaded rods in the concrete base. Use the flat washers to secure the mounting.

The power input electrical cable is fed through the bottom-left opening (100 mm x 50 mm) of the column.

Below is a schematic representation of the base of the EV charger column to be mounted on the concrete base.

Figure 3. The base of the EV charger column



Site design

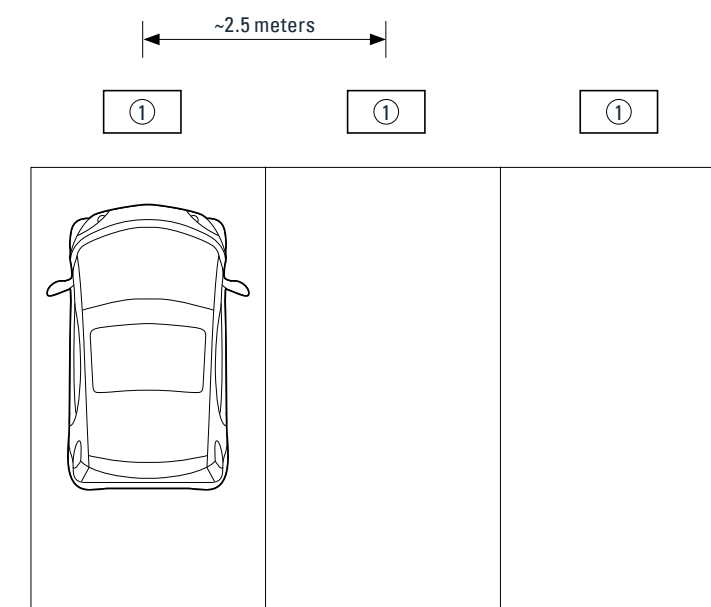
A site for electric vehicles (EVs) equipped with EV chargers mounted on columns can be designed in different setups. This section is intended to provide some valuable information on the placement of the EV chargers with respect to parking spaces.

As shown in Figure 4, Eaton recommends installing the EV charger at the front and center of the parking space, and each EV charger should serve one parking space.

Configuration and commissioning

Before the installation of the Green Motion DC 22 on its column, please refer to the installation manual for further details, available from www.eaton.com/greenmotiondc22.

Figure 4. Optimal positioning of EV chargers



Tag	Description
①	EV charger