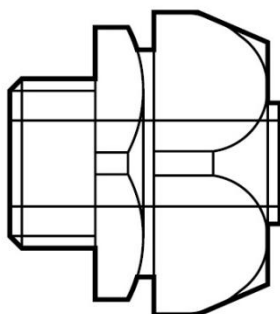


## 2000METAL connectors

### Straight fixed male

Item codes : from 382000 to 382014, 382016, from 382020 to 382037, from 382040 to 382049 and from 382051 to 382064



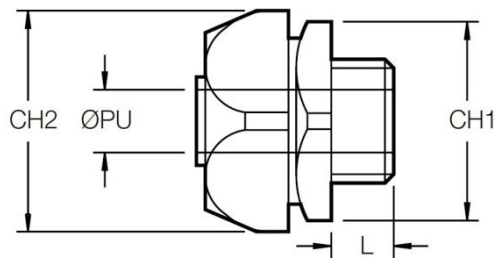
SUMMARY	PAGES
1. Description and applications.....	1
2. Dimensions and compatibility .....	1
3. Technical features.....	2
4. Environmental profile.....	3
5. Conformity and approvals.....	3

### 1. DESCRIPTION AND APPLICATIONS

Straight fixed male nickel-plated brass or galvanized fittings for PVC, metal or composite conduits. It guarantees high mechanical and thermal performance and it's the best and safe solution for most applications. The seal between the conduit and the connector is guaranteed by the sealing ring, while electrical continuity is assured by the metal ferrule screwed up into the conduit. The bending of the terminal part of the connector avoids the possible abrasion of electrical cables. The rapid mechanical tightening assures also a good resistance to tension, torque and corrosion. It's the ideal solution for all requirements and installations.

### 2. DIMENSIONS AND COMPATIBILITY

Dimensions and packaging:



Item Isometric	NW	THR	Dimensions [mm]				Pack [pcs]
			ØPU	CH1	CH2	L	
382040	8	M12	6,5	18,0	20,0	8,0	50
382041	10	M16	8,5	20,0	22,0	8,0	50
382042	12	M16	10,0	24,0	26,0	8,0	50
382043	12	M20	10,0	24,0	26,0	8,0	50
382035	16	M16	10,0	27,0	29,0	8,0	25
382044	16	M20	14,0	27,0	29,0	8,0	25
382036	21	M20	14,0	33,0	35,0	8,0	25
382045	21	M25	19,0	33,0	35,0	8,0	25
382037	27	M25	19,0	43,0	45,0	8,0	15
382046	27	M32	24,0	43,0	45,0	9,5	15
382047	35	M40	32,0	51,0	54,0	11,5	10
382048	40	M50	37,0	60,0	62,0	11,5	10
382049	51	M63	47,0	74,0	77,0	13,0	4

In according to UNI 5542-65.

Item PG	NW	THR	Dimensions [mm]				Pack [pcs]
			CH	L	Lf	ØE	
382020	8	PG7	6,5	18,0	20,0	8,0	50
382021	10	PG7	8,5	20,0	22,0	8,0	50
382022	10	PG9	8,5	20,0	22,0	8,0	50
382023	10	PG11	8,5	20,0	22,0	8,0	50
382024	10	PG13,5	8,5	21,0	22,0	8,0	50
382025	12	PG11	10,5	24,0	26,0	8,0	50
382026	12	PG13,5	10,5	24,0	26,0	8,0	50
382027	12	PG16	10,5	24,0	26,0	8,0	50
382028	16	PG13,5	14,0	27,0	29,0	8,0	25
382029	16	PG16	14,0	27,0	29,0	8,0	25
382030	21	PG21	19,0	33,0	35,0	8,0	25
382031	27	PG29	24,0	43,0	45,0	9,5	15
382032	35	PG36	32,5	51,0	54,0	11,5	10
382033	40	PG42	37,3	60,0	62,0	11,5	10
382034	51	PG48	48,0	74,0	77,0	13,0	4

In according to DIN 40430.

Item GAS	NW	THR	Dimensions [mm]				Pack [pcs]
			CH	L	Lf	ØE	
382000	8	G1/4	6,5	18,0	20,0	8,0	50
382016	8	G3/8	7,0	18,0	20,0	8,0	50
382001	10	G1/4	8,5	20,0	22,0	8,0	50
382002	10	G3/8	8,5	20,0	22,0	8,0	50
382003	12	G3/8	10,5	24,0	26,0	8,0	50
382004	12	G1/2	10,5	24,0	26,0	8,0	50
382005	16	G1/2	14,0	27,0	29,0	8,0	50
382006	21	G3/4	19,0	33,0	35,0	8,0	25
382007	27	G1	24,0	43,0	45,0	9,5	15
382008	35	G1 ¼	32,0	51,0	54,0	11,5	10
382009	40	G1 ½	37,3	60,0	62,0	11,5	10
382010	51	G2	48,0	74,0	77,0	13,0	4
382011	63	G2 ½	58,0	92,0	96,0	18,5	2
382012	77	G3	72,0	109	109	21,0	1

# 2000METAL connectors

## Straight fixed male

Item codes : from 382000 to 382014, 382016, from 382020 to 382037, from 382040 to 382049 and from 382051 to 382064

Item GAS	NW	THR	Dimensions [mm]				Pack [pcs]
			CH	L	Lf	ØE	
382013	102	G4	96,0	132	135	22,0	1
382014	127	G5	122	161	160	27,0	1

In according to UNI ISO 228/1

Item NPT	NW	THR	Dimensions [mm]				Pack [pcs]
			CH	L	Lf	ØE	
382051	10	NPT1/4	6,5	20,0	22,0	9,5	50
382052	10	NPT3/8	8,5	20,0	22,0	9,5	50
382053	12	NPT3/8	10,0	24,0	26,0	9,5	50
382054	12	NPT1/2	10,0	24,0	26,0	12,5	50
382055	16	NPT1/2	14,0	27,0	29,0	12,5	50
382056	21	NPT3/4	19,0	33,0	35,0	12,5	25
382057	27	NPT1	24,0	43,0	45,0	17,0	25
382058	35	NPT1 ¼	32,0	51,0	54,0	20,5	15
382059	40	NPT1 ½	37,0	60,0	62,0	20,5	10
382060	51	NPT2	47,0	74,0	77,0	21,0	4
382061	63	NPT2 ½	58,0	92,0	96,0	28,5	2
382062	77	NPT3	72,0	109	109	30,0	1
382063	102	NPT4	96,0	132	135	31,0	1
382064	127	NPT5	122	161	162	44,0	1

In according to ASA B 2.1

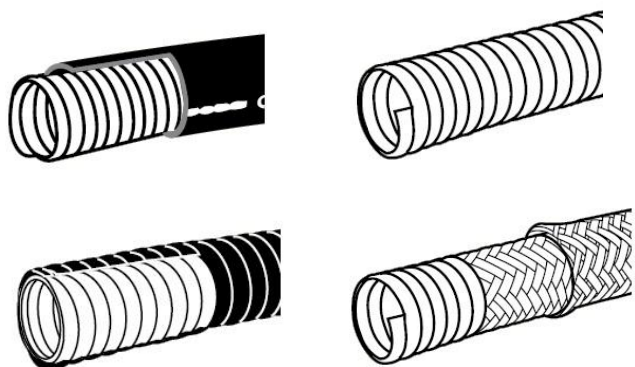
### Compatibility:

PVC conduits: GE PVC, GE TR, and FP2000 series.

Metal conduits: TRS, GNS, GND and GNDX series.

Composite conduits: FA, FA HF, FA2000, PN, PN HF, P3, P3 HF, P2X, LA, FTR, FTR HF and NGDAX series.

Metal accessories and equipments.



### 3. TECHNICAL FEATURES

#### Raw material:

Body and locknut: nickel plated brass UNI EN 12164 CW 614N 2 + 5 µm (from NW 8 to NW 51) or galvanized brass UNI EN 12164 CW 614N 2 µm minimum (from NW 63 to NW 127).

Lock ring: polyamide PA6 [UL94-V2] (red).

Ferrule: tinned steel (from NW 8 to NW 51) or brass UNI EN 12164 CW 614N 2 µm minimum (from NW 63 to NW 127).

### Resistance to corrosion:

Represents the resistance to corrosion in different environments: all 2000METAL connectors have been subjected to the corrosion tests.

Resistance to corrosion in neutral saline mist in according to UNI ISO 9227 (pluviometric index 1,8 ml/hours): no signs of corrosion after 192 hours.

Resistance to corrosion in constant damp humidity in according to DIN 50017 SK (conditions: 38 °C / 100 °F with 100% of relative humidity): no signs of corrosion after 1000 hours.

### Operating temperature:

Minimum: -20° C / -4° F

Maximum: +80° C / +176° F

### IP protection index:

IP42 with TRS, GNS, GND, GNDX, NGDAX series conduits and adaptor rings..

IP43 with FTR, FTR HF series conduits.

IP65 with FA, FA HF, FA2000 PN, PN HF, P3, P3 HF, LA, P2X, GE PVC, GE TR series conduits and adaptor rings.

IP66 with FP2000 series conduits.

IP67 with FA, FA HF, FA2000 series conduits and sleeves.

1 <sup>st</sup> digit IP		2 <sup>nd</sup> digit IP	
Protection against the ingress of solid bodies		Protection against the ingress of liquids	
<b>0</b>	No protection	<b>2</b>	Protection against drops of water falling at up to 15° from the vertical
<b>1</b>	Protection against solid bodies larger than 50 mm (e.g.: accidental contact)	<b>3</b>	Protection against drops of rain water at up to 60° from the vertical
<b>2</b>	Protection against solid bodies larger than 12 mm (e.g.: finger)	<b>4</b>	Protection against sprays of water from all directions
<b>3</b>	Protection against solid bodies larger than 2,5 mm	<b>5</b>	Protection against jets of water from all directions
<b>4</b>	Protection against solid bodies larger than 1 mm	<b>6</b>	Protection against jets of water of similar force to heavy seas
<b>5</b>	Protection against dust	<b>7</b>	Protection against the effects of immersion
<b>6</b>	Complete protection against dust	<b>8</b>	Protection against prolonged effects of immersion under pressure

### Thread types and dimensions:

**ISO THREAD (EN 60423)**

Dimensions in mm

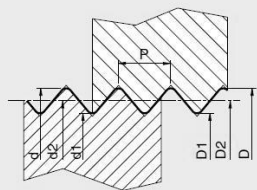
Threads	Outside thread			Inside thread			
	Pitch	Outside diam.	Medium diam.	Core diam.	Outside diam.	Medium diam.	Inside diam.
Thread size	P	d	d <sub>2</sub>	d <sub>c</sub>	D	D <sub>2</sub>	D <sub>i</sub>
M12	1,5	11,968	10,994	10,128	12	11,026	10,376
M16	1,5	15,968	14,994	14,128	16	15,026	14,376
M20	1,5	19,968	18,994	18,128	20	19,026	18,376
M25	1,5	24,968	23,994	23,128	25	24,026	23,376
M32	1,5	31,968	30,994	30,128	32	31,026	30,376
M40	1,5	39,968	38,994	38,128	40	39,026	38,376
M50	1,5	49,968	48,994	48,128	50	49,026	48,376
M63	1,5	62,968	61,994	61,128	63	62,026	61,376

# 2000METAL connectors

## Straight fixed male

Item codes : from 382000 to 382014, 382016, from 382020 to 382037, from 382040 to 382049 and from 382051 to 382064

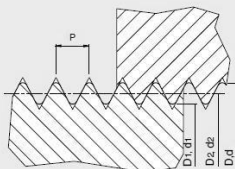
### PG THREAD (DIN 40430)



Dimensions in mm  
1" = 25,4 mm

Thread size	Outside diam. d = D	Medium diam. d <sub>2</sub> = D <sub>2</sub>	Core diam. d <sub>1</sub> = D <sub>1</sub>	Pitch P	t.p.i. (threads/inch) z
PG 7	12,50	11,89	11,28	1,27	20
PG 9	15,20	14,53	13,86	1,41	18
PG 11	18,60	17,93	17,26	1,41	18
PG 13,5	20,40	19,73	19,06	1,41	18
PG 16	22,50	21,83	21,16	1,41	18
PG 21	28,30	27,54	26,78	1,588	16
PG 29	37,00	36,24	35,48	1,588	16
PG 36	47,00	46,24	45,48	1,588	16
PG 42	54,00	53,24	52,48	1,588	16
PG 48	59,30	58,54	57,78	1,588	16

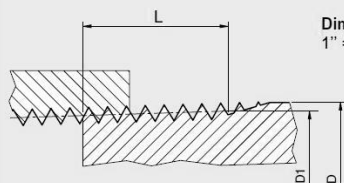
### GAS THREAD (UNI ISO 228)



Dimensions in mm  
1" = 25,4 mm

Thread size	Outside diam. d = D	Medium diam. d <sub>2</sub> = D <sub>2</sub>	Core diam. d <sub>1</sub> = D <sub>1</sub>	Pitch P	t.p.i. (threads/inch) z
G 1/4"	13,157	12,301	11,445	1,337	19
G 3/8"	16,662	15,806	14,950	1,337	19
G 1/2"	20,955	19,793	18,631	1,814	14
G 3/4"	26,441	25,279	24,117	1,814	14
G 1"	33,249	31,770	30,291	2,309	11
G1 1/4"	41,910	40,431	38,952	2,309	11
G1 1/2"	47,803	46,324	44,845	2,309	11
G2"	59,614	58,135	56,656	2,309	11
G2 1/2"	75,184	73,705	72,226	2,309	11
G3"	87,884	86,405	84,926	2,309	11
G4"	113,030	111,551	110,072	2,309	11
G5"	138,430	136,951	135,472	2,309	11

### NPT THREAD (ANSI B 2.1)



Dimensions in mm  
1" = 25,4 mm

Thread size	Outside diam.			Pitch P	t.p.i. (threads/inch) z
	D	L	D <sub>1</sub>		
NPT 1/4"	13,716	10,206	12,7635	1,411	19
NPT 3/8"	17,145	10,358	16,1925	1,411	19
NPT 1/2"	21,336	13,556	20,1115	1,814	14
NPT 3/4"	26,670	13,861	25,4455	1,814	14
NPT 1"	33,401	17,343	31,9100	2,309	11 1/2
NPT 1 1/4"	42,164	17,953	40,6730	2,309	11 1/2
NPT 1 1/2"	48,260	18,377	46,7690	2,309	11 1/2
NPT 2"	60,325	19,215	58,8340	2,309	11 1/2
NPT 2 1/2"	73,025	28,892	70,8817	3,175	8
NPT 3"	88,900	30,480	86,7567	3,175	8
NPT 4"	114,300	33,020	112,1567	3,175	8
NPT 5"	141,300	35,720	139,1569	3,175	8

## 4. ENVIRONMENTAL PROFILE

All the items identified in this technical sheet respect in terms of concentration of substances and raw materials the European legislations about dangerous and forbidden substances and chemical preparations.

## 5. CONFORMITY AND APPROVALS



All the items identified in this technical sheet are compliant to all the requirements and the regulations currently in force in the European Union about safety, health and environmental issues.



IMQ mark: items from 382035 to 382037 and from 382041 to 382049.



UL Listed mark: items from 382004 to 382010, from 382044 to 382046, from 382026 to 382030, 382032, 382034 and from 382054 to 382060



CSA Listed mark: items from 382003 to 382010, from 382025 to 382034, from 382042 to 382046 and from 382053 to 382060



UL Recognized mark: items 302003, 382025, 382031, 382033, 382042, 382043 and 382053.



RINA mark: items from 382035 to 382037 and from 382041 to 382049.

For technical documentation, test reports, commercial information or any other needs please refer to the local LEGRAND office.