

NOTES:

1. MATERIAL:  
BODY - ALUMINUM, TIN PLATED  
SCREW - ALUMINUM, TIN PLATED
2. UL LISTED & CSA CERTIFIED FOR USE UP TO 600V & TEMPERATURE RATED 90°C (AL9CU)  
NOTE: LAM3B2-56-6Y IS cULus
3. DUAL RATED FOR USE WITH COPPER OR ALUMINUM STRANDED CODE CONDUCTOR
4. THESE PARTS ARE RoHS COMPLIANT
5. USE OF OXIDE INHIBITING JOINT COMPOUND LIKE PANDUIT CMP-100 RECOMMENDED FOR PAD TO PAD AND CONDUCTOR SURFACES
6. SEE PACKAGING LABEL FOR TIGHTENING TORQUE INFORMATION
7. PKG QTY:  
6 = 6  
3 = 3  
1 = 1
8. \*\* DENOTES NEMA HOLE SPACING

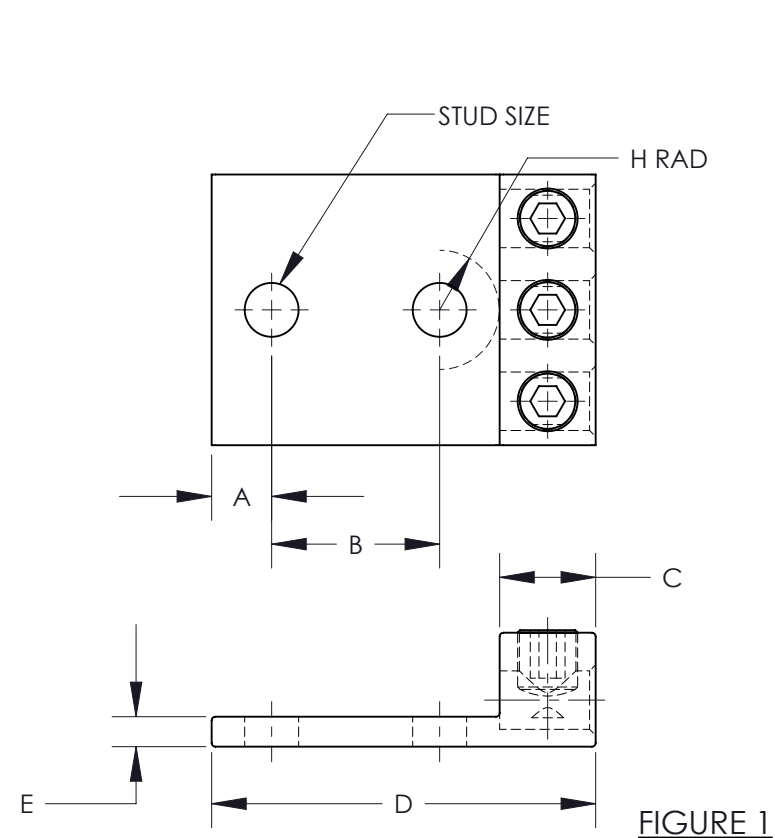


FIGURE 1

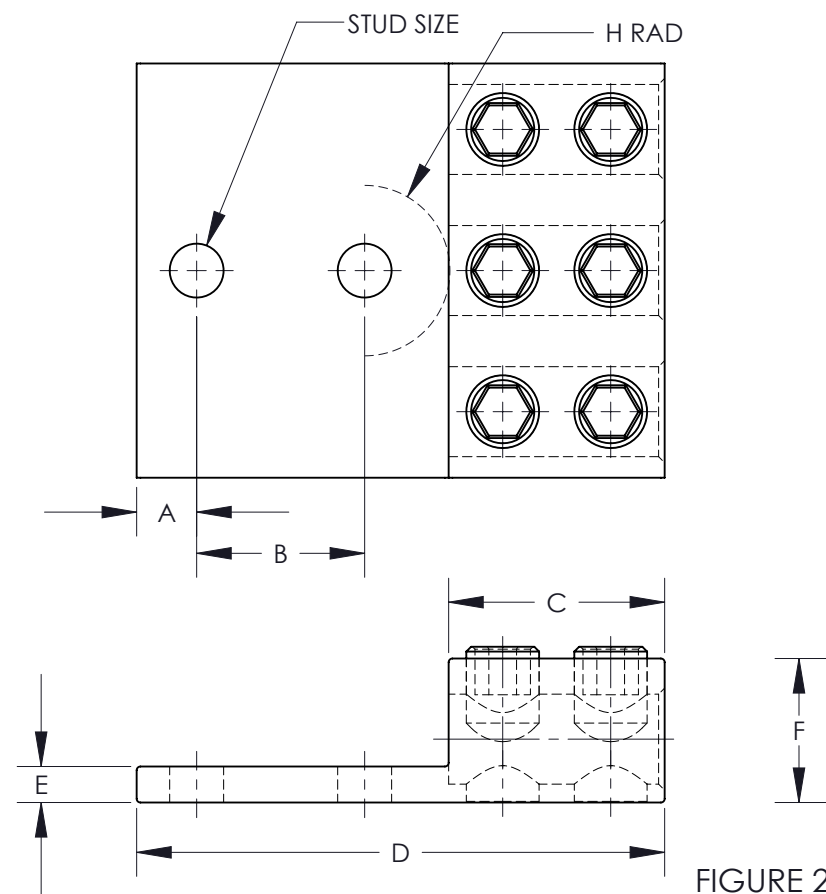


FIGURE 2

PART NUMBER	FIGURE	STUD SIZE	DIMENSIONS - IN [mm] +/- .02 [.5]								WIRE RANGE	HEX KEY*
			A	B	C	D	E	F	G	H		
LAM3B2-14-6Y	1	5/16	0.31 [7.9]	0.88 [22.4]	0.46 [11.7]	2.49 [63.2]	0.19 [4.8]	0.47 [11.9]	1.63 [41.4]	0.84 [21.3]	2-14 AWG	SLOTTED
LAM3B1/0-38-6Y	1	3/8	0.34 [8.6]	1.00 [25.4]	0.75 [19.1]	2.91 [73.9]	0.25 [6.4]	0.88 [22.4]	2.00 [50.8]	0.81 [20.6]	1/0-14 AWG	SLOTTED
LAM3B3/0-12-3Y	1	1/2	0.63 [16.0]	**1.75 [44.5]	1.00 [25.4]	4.25 [108.0]	0.31 [7.9]	1.19 [30.1]	2.81 [71.4]	0.88 [22.2]	3/0-6 AWG	1/4"
LAM3B250-12-1Y	1	1/2	0.63 [16.0]	**1.75 [44.5]	1.00 [25.4]	4.00 [101.6]	0.31 [7.9]	1.19 [30.1]	2.82 [71.6]	0.63 [16.0]	250kcmil - 6 AWG	5/16"
LAM3B350-12-1Y	1	1/2	0.63 [16.0]	**1.75 [44.5]	1.25 [31.8]	4.50 [114.3]	0.31 [7.9]	1.38 [35.1]	3.50 [88.9]	0.88 [22.2]	350kcmil - 6 AWG	5/16"
LAM3LB600-12-1	2	1/2	0.63 [16.0]	**1.75 [44.5]	2.25 [57.2]	5.50 [139.7]	0.38 [9.7]	1.50 [38.1]	4.32 [109.7]	0.88 [22.2]	600kcmil - 2 AWG	3/8"
LAM3LB1000-121Y	2	1/2	0.63 [16.0]	**1.75 [44.5]	2.75 [69.9]	6.19 [157.2]	0.56 [14.2]	1.88 [47.8]	5.27 [133.9]	1.06 [26.9]	1000-500kcmil	1/2"

\* HEX SIZE MAY DIFFER FROM CHART. DIFFERENCE IN SIZE WILL NOT AFFECT FIT, FORM, OR FUNCTION OF PART

							TITLE LAM3B, LAM3LB SERIES ALUMINUM MECHANICAL LUGS CUSTOMER DRAWING	
							ITEM REVISION NAME	N41561BA-C41561/06
							DATASET FILE NAME	C41561/06.SLDDRW
							UNLESS OTHERWISE SPECIFIED, DIMENSIONAL TOLERANCES ARE: IN [mm] .X ± .XXX ± .XX ± ANGLES ±	
							MATERIAL SEE NOTES	
							DRAWING NUMBER C41561_05	
06	12/19	JHNU	JHNU	RGB	REMOVED LAM3B2-56-6Y ADDED LAM3B2-14-6Y	N41561BA-C41561	THIRD ANGLE PROJECTION	
05	2/13	JHNU	JHNU	RGB	REVISED TITLE BLOCK	N41561BA-C41561	DRAWN BY JHNU	
REV	DATE	BY	CHK	APR	DESCRIPTION	ECN	DATE	SCALE
							2/06	NONE
							CHK	JHNU
							SCALE	NONE
							SHEET 1 OF 1	
							SIZE	B