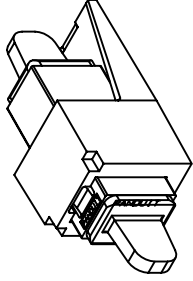
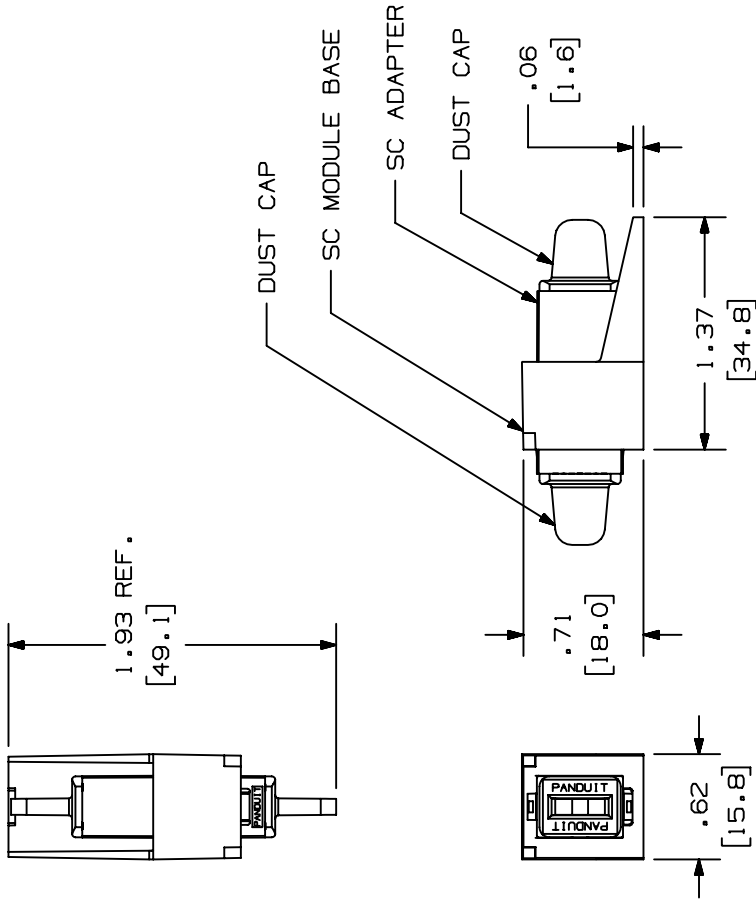


THIS COPY IS PROVIDED ON A RESTRICTED BASIS AND IS NOT TO BE USED IN ANY WAY DETRIMENTAL TO THE INTERESTS OF PANDUIT CORP.

PANDUIT P/N	WEIGHT	SPLIT SLEEVE TYPE
CMSEISC**	1.2 lbs/100 PCS (540.0 g/100 PCS)	PHOS BRONZE
CMSBUSC**	1.2 lbs/100 PCS (540.0 g/100 PCS)	ZIRCONIA

NOTES:

- SEE CURRENT CATALOG FOR PART NUMBER SUFFIXES TO INDICATE COLOR OF MODULE BASE, AND/OR PACKAGE QUANTITIES. SEE CATALOG FOR COMPLETE LIST OF PARTS APPLICABLE FOR USE WITH THIS PART.
- MATERIALS:**
 - MODULE BASE: ABS
 - ADAPTER HOUSING: POLYCARBONATE
 - SPLIT SLEEVE: ZIRCONIA/PHOS BRONZE
 - INNER LATCH: POLYETHERIMIDE
 - DUST CAP: THERMOPLASTIC ELASTOMER
- COMPLIANT WITH TIA/EIA-604-3 (FOCIS-3) AND TIA/EIA-568B.3
- DIMENSIONS IN BRACKETS ARE METRIC [mm]



MINI-COM SIMPLEX SC ADAPTER MODULE
CUSTOMER DRAWING



 THIRD ANGLE PROJECTION	ALL DIMENSIONS ARE GIVEN IN INCHES UNLESS OTHERWISE SPECIFIED. DIMENSIONAL TOLERANCES ARE: (.XX) ±.03 (0.8) ANGLES REVIEW DRAWING NUMBERS	DRAWING FILENAME MO1106BD_DC_00D.prt SCALE NONE
DRAWN BY MC	PART NO. CMSEISC**/CMSBUSC** CMSEISC**/CMSBUSC**	DRAWING NO. 01106-06
DATE 06-19-01	RELEASED TO PRODUCTION 01106-06	SIZE A
CHK'D PJI	ECN - R DESCRIPTION	

REV	DATE	BY	CHK	DESCRIPTION	ECN	R	CUST	SUP	OTH
3	04-19-05	MYW		RELEASED TO PRODUCTION	01106-06				