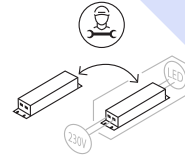
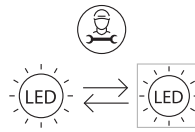


DALLE BACKLIT PRO PRISM 30W



SANS ALIMENTATION
WITHOUT DRIVER

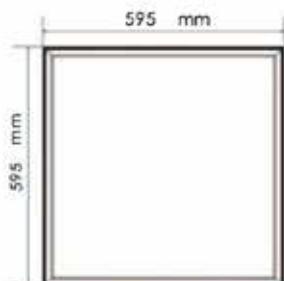
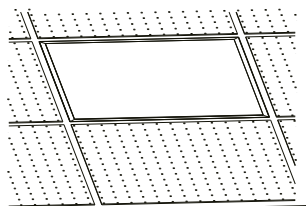
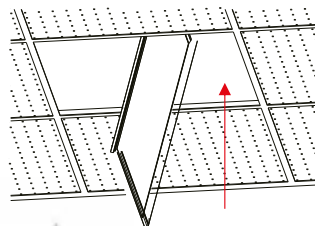
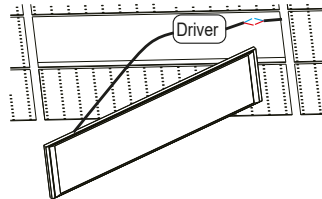
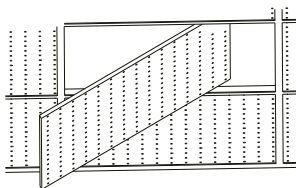


Caractéristiques techniques / Características técnicas / Características técnicas / Caratteristiche tecniche

Modèle-Référence / Modelo-Referencia / Modello-Riferimento / Modelo-Referência	BL04362004 / PL04302001 / BL04302001	BL04302003
Tension nominale / Tensión nominal / Tensione nominale / Tensão nominal	230VAC - 50Hz	
Puissance nominale / Potencia nominal / Potenza nominale / Potência nominal	30W	
Type-Longueur de câble / Tipo-Longitud del cable / Tipo-Lunghezza del cavo / Tipo-Comprimento do cabo	Boitier de connexion / connecting box	
Indice de protection / Grado de protección / Indice di protezione / Grau de protecção	IP 20 / IK 04	
Dimensions / Dimensiones / Dimensioni / Dimensões	595*595*30 mm	295*1195*30 mm
Lampes LED / Lámparas LED / Lampade LED / Lâmpadas LED	LED SMD	
Recouvrable / can be cover or not	Isolant rouleau (hors alim) / Rolled insulation (excl power supply)	
Flux lumineux nominal / Flujo luminoso nominal / Flusso luminoso nominale / Fluxo luminoso nominal	(LS 3900m) 3500lm	
Durée de vie nominale / Vida útil nominal / Durata di vita nominale / Tempo de vida nominal	≥ 50000 h (L80 @ 25°C) *	
Cycles de commutation / Ciclos de conmutación / Cicli di accensione / Ciclos de comutação		
Température de couleur / Temperatura de color / Temperatura di colore / Temperatura de cor	4000 K	
Indice de rendu des couleurs / Índice de rendimento de color / Índice di resa del colore / Índice de restituição das cores	≥ 80 Ra	
Angle de faisceau nominal / Ángulo del haz luminoso nominal / Angolo del fascio nominale / Ângulo nominal do feixe	90°	
Facteur de puissance / Factor de potencia / Fattore di potenza / Fator de potência	> 0.9	



Le cable de securite et l'alimentation sont fournis



L'installation doit être réalisée par un professionnel qualifié

Veillez couper l'alimentation générale afin d'éviter les risques d'électrocutions

Veillez vous assurer de la bonne tension du réseau

Ne pas être à moins de 0.3m de tout objet inflammable ou sensible à la chaleur



Terminal block not included, installation and maintenance must be performed by qualified person

Please make sure to turn the power off before installation

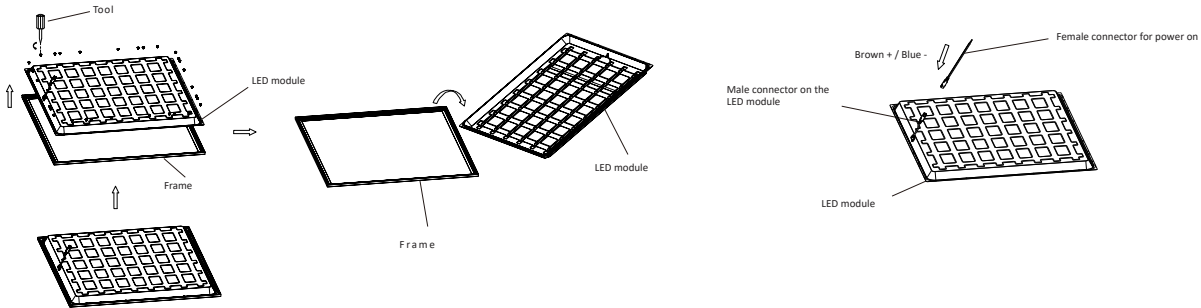
Please make sure the lamp is working with the correct input voltage

The minimum distance from lighted objects to luminaires shall be kept at least 0.3m

DALLE BACKLIT PRO PRISM 30W

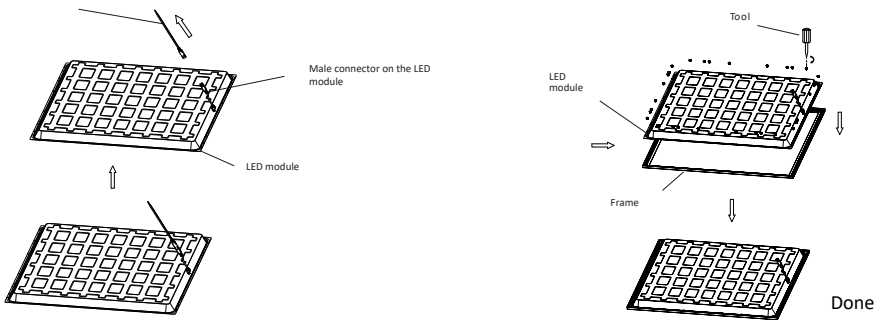
Comment démonter / How to disassemble?

Utiliser un tourne vis afin de démonter le dos du produit
Use a screw driver to disassemble the back of the panel



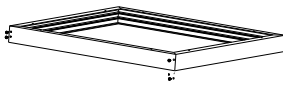
Comment monter / How to assemble?

Utiliser un tourne vis afin de remonter le dos du produit
Use a screw driver to assemble the back of the panel

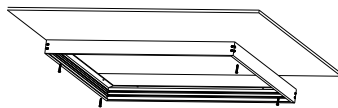


Version en kit : **BL08000013 600X600**
BL08000014 300X1200

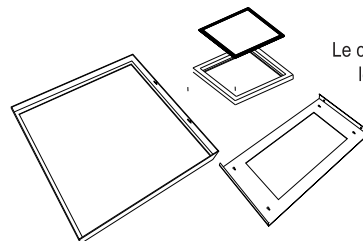
Version mécano soudée : **BL08000002 600x600**



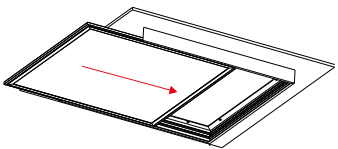
1. Assembler les barres en aluminium avec les vis
Assemble the bars



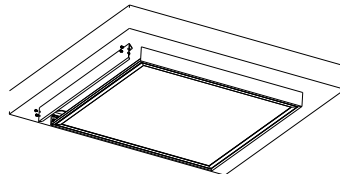
2. Fixer le cadre au plafond
Place the frame into the ceiling



Le cadre est composé de deux pièces :
le cadre et sa pièce de fixation



3. Retirer une barre en aluminium Insérer le panneau
Remove one bar and place the panel into the frame



4. Remettre la barre en aluminium
Replace the bar

ERP / EPREL

BL04362004



PL04302001



BL04302001



BL04302003

