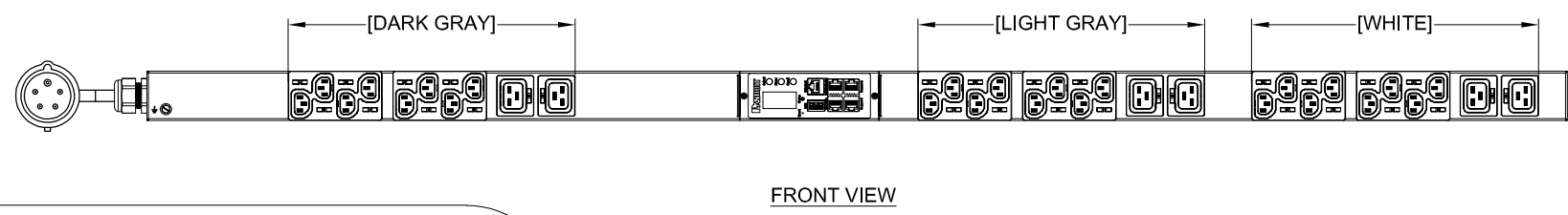
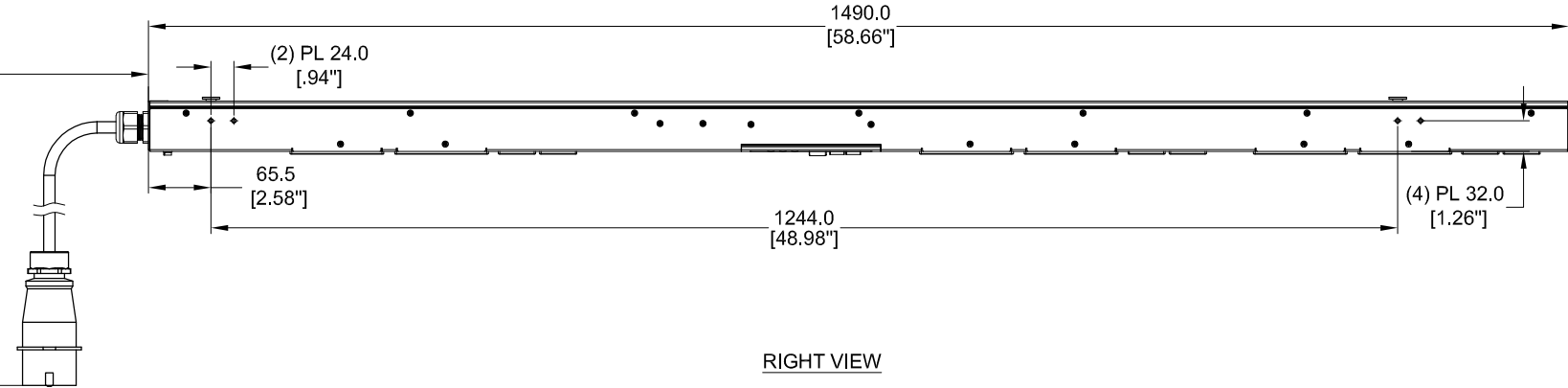
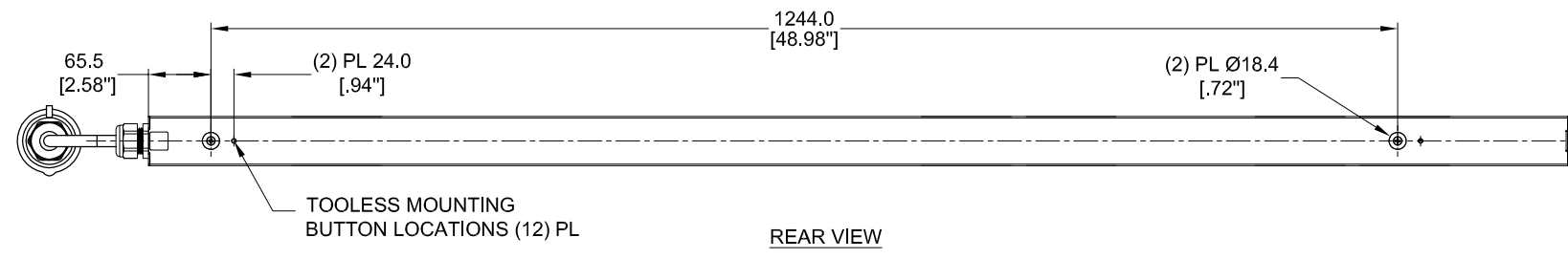
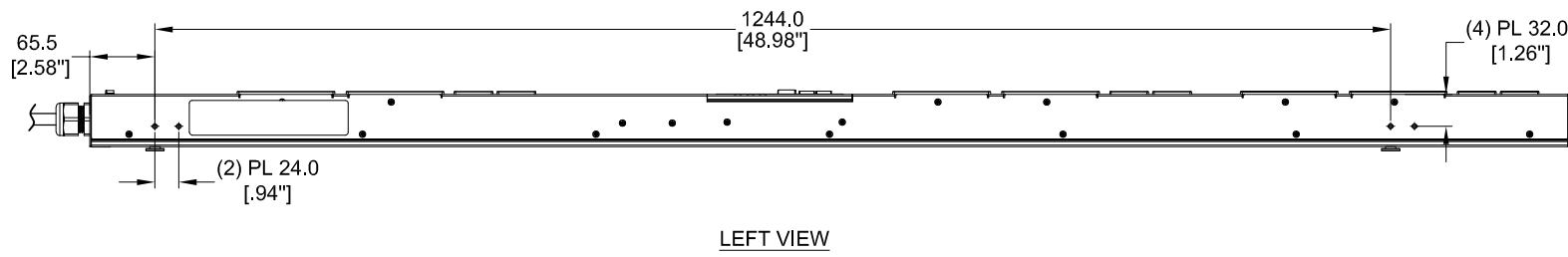


THIS COPY IS PROVIDED ON A RESTRICTED BASIS AND IS NOT TO BE USED IN ANY WAY DETRIMENTAL TO THE INTERESTS OF PANDUIT CORP.

PANDUIT P/N	WEIGHT
P30D05M-XXYZ	SEE SHEET 2



SPECIFICATION:

1. STANDARD:

UNIT TYPE:	MONITORED INPUT
ORIENTATION:	VERTICAL, MID
OUTLET QTY&TYPE:	(24) C13, (6) C19
INPUT VOLTAGE:	200-240/346-415VAC
INPUT CURRENT:	16A
BREAKER QTY&TYPE:	N/A
INPUT PHASE:	THREE-PHASE, WYE
RATED POWER:	11.0 KVA
INPUT PLUG:	IEC 60309 3P+N+E 6H 16A
INPUT POWER CORD:	SEE SHEET 2 FOR PART NUMBER TABLE
REGULATORY STANDARD:	RoHS COMPLIANT

2. ADDITIONAL:

NONE

3. ACCESSORIES:

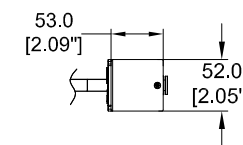
(1) QUICK-START GUIDE

NOTES:

1. PRIMARY DIMENSIONS ARE IN MILLIMETERS. SECONDARY DIMENSION ARE IN [INCHES]
2. INSTALLATION SHALL COMPLY WITH ALL APPLICABLE NATIONAL, STATE, AND LOCAL CODES
3. VISIT OUR ON-LINE CATALOG AT WWW.PANDUIT.COM FOR A CURRENT LIST OF PRODUCTS APPLICABLE FOR USE WITH THIS PART
4. FOR FULL PRODUCT FUNCTIONALITY REFER TO USER MANUAL
5. DRAWING VIEWS SHOW THE INPUT CORD IN THE "TOP END FED" CONFIGURATION

IDENTIFICATION

FOR FINISHED GOOD PART NUMBER & DESCRIPTION TABLE SEE SHEET 2 CONFIGURABLE PART NUMBERS: P30D05M-XX Y Z



XX: FINISHED GOOD COLOR BL=BLACK YL=YELLOW RD=RED BU=BLUE WH=WHITE GN=GREEN	Y: INPUT FEED TYPE 1=TOP-END FED 2=BOTTOM-END FED	Z: INPUT CORD LENGTH A=1 METER B=2 METER C=3 METER
--	---	---

FOR LENGTH SEE SHEET 2 PART NUMBER TABLE.

PLUG/RECEPTACLE BLOCK



PLUG
IEC 60309, 4P 5W, 6H
IP44 (SPASHPROOF)
16A, 346-415V MAX RATED INPUT



RECEPTACLES
IEC 60320/C19
16A, 250V MAX RATED OUTPUT



RECEPTACLES
IEC 60320/C13
10A, 250V MAX RATED OUTPUT

REV	DATE	BY	CHK	APR	DESCRIPTION	ECN
02A	06/07/2018	H.XU	MIM	JAWI	ADDED SHEET 2 WITH CONFIGURABLE PART NUMBER TABLE AND DESCRIPTION UPDATED IDENTIFICATION TO INCLUDE CONFIGURABLE OPTION 'DE-CODER'	P30D05M
01A	07/27/2017	GEORGE	MIM	EDM	INITIAL RELEASE	P30D05M

WE ASK THAT YOU CHECK FULLY THE DIMENSIONS, NOTES, AND SIGN THE CLIENT SIGNATURE BOX. THE JOB WILL NOT PROGRESS WITHOUT SIGNED APPROVAL. PLEASE DO NOT DELAY IN RETURNING PROOF AS IT WILL AFFECT DELIVERY.		SIGN
		DATE
		PRINT
TITLE INTELLIGENT SERIES PDU P30D05M-XXYZ CUSTOMER DRAWING		
ITEM REVISION NAME:		
DATASHEET FILE NAME:		
UNLESS OTHERWISE SPECIFIED DIMENSIONAL TOLERANCE ARE: mm [IN]		MATERIAL/COLOR:
Tolerance(mm) 0<L<50 ±0.5 50<L<250 ±1.0 250<L<500 ±1.5 500<L<1000 ±2.5 1000<L<2000 ±4.0		N/A
THIRD ANGLE PROJECTION		DRAWING NUMBER: P30D05M_DC
DRAWN BY GEORGE	DATE 07/27/2017	CHK SEAN
SCALE NONE	SHT 1 OF 2	
		SCALE B



THIS COPY IS PROVIDED ON A RESTRICTED BASIS AND IS NOT TO BE USED IN ANY WAY DETRIMENTAL TO THE INTERESTS OF PANDUIT CORP.

FINISHED GOOD PART NUMBER	FINISHED GOOD DESCRIPTION	COLOR	INPUT CORD LENGTH	WEIGHT
P30D05M	VERTICAL,(24) C13,(6)C19,MONITORED INPUT, 200-240/346-415V/16A/3 PHASE WYE, TOP-END FED, 3 METER INPUT CORD, BLACK	BLACK (RAL 9005)	3M(+254MM-127MM) 10'[+10"/-5"]	6.8kg
P30D05M-BL1A	VERTICAL,(24) C13,(6)C19,MONITORED INPUT, 200-240/346-415V/16A/3 PHASE WYE, TOP-END FED, 1 METER INPUT CORD, BLACK	BLACK (RAL 9005)	1M(+178MM-89MM) 3.3'[+3.5"/-1.75"]	6.2kg
P30D05M-BL1B	VERTICAL,(24) C13,(6)C19,MONITORED INPUT, 200-240/346-415V/16A/3 PHASE WYE, TOP-END FED, 2 METER INPUT CORD, BLACK	BLACK (RAL 9005)	2M(+178MM-89MM) 6.5'[+7"/-3.5"]	6.5kg
P30D05M-RD1A	VERTICAL,(24) C13,(6)C19,MONITORED INPUT, 200-240/346-415V/16A/3 PHASE WYE, TOP-END FED, 1 METER INPUT CORD, RED	RED (RAL 3020)	1M(+178MM-89MM) 3.3'[+3.5"/-1.75"]	6.2kg
P30D05M-RD1B	VERTICAL,(24) C13,(6)C19,MONITORED INPUT, 200-240/346-415V/16A/3 PHASE WYE, TOP-END FED, 2 METER INPUT CORD, RED	RED (RAL 3020)	2M(+178MM-89MM) 6.5'[+7"/-3.5"]	6.5kg
P30D05M-RD1C	VERTICAL,(24) C13,(6)C19,MONITORED INPUT, 200-240/346-415V/16A/3 PHASE WYE, TOP-END FED, 3 METER INPUT CORD, RED	RED (RAL 3020)	3M(+254MM-127MM) 10'[+10"/-5"]	6.8kg
P30D05M-WH1A	VERTICAL,(24) C13,(6)C19,MONITORED INPUT, 200-240/346-415V/16A/3 PHASE WYE, TOP-END FED, 1 METER INPUT CORD, WHITE	WHITE (RAL 9003)	1M(+178MM-89MM) 3.3'[+3.5"/-1.75"]	6.2kg
P30D05M-WH1B	VERTICAL,(24) C13,(6)C19,MONITORED INPUT, 200-240/346-415V/16A/3 PHASE WYE, TOP-END FED, 2 METER INPUT CORD, WHITE	WHITE (RAL 9003)	2M(+178MM-89MM) 6.5'[+7"/-3.5"]	6.5kg
P30D05M-WH1C	VERTICAL,(24) C13,(6)C19,MONITORED INPUT, 200-240/346-415V/16A/3 PHASE WYE, TOP-END FED, 3 METER INPUT CORD, WHITE	WHITE (RAL 9003)	3M(+254MM-127MM) 10'[+10"/-5"]	6.8kg
P30D05M-YL1A	VERTICAL,(24) C13,(6)C19,MONITORED INPUT, 200-240/346-415V/16A/3 PHASE WYE, TOP-END FED, 1 METER INPUT CORD, YELLOW	YELLOW (RAL 1023)	1M(+178MM-89MM) 3.3'[+3.5"/-1.75"]	6.2kg
P30D05M-YL1B	VERTICAL,(24) C13,(6)C19,MONITORED INPUT, 200-240/346-415V/16A/3 PHASE WYE, TOP-END FED, 2 METER INPUT CORD, YELLOW	YELLOW (RAL 1023)	2M(+178MM-89MM) 6.5'[+7"/-3.5"]	6.5kg
P30D05M-YL1C	VERTICAL,(24) C13,(6)C19,MONITORED INPUT, 200-240/346-415V/16A/3 PHASE WYE, TOP-END FED, 3 METER INPUT CORD, YELLOW	YELLOW (RAL 1023)	3M(+254MM-127MM) 10'[+10"/-5"]	6.8kg
P30D05M-BU1A	VERTICAL,(24) C13,(6)C19,MONITORED INPUT, 200-240/346-415V/16A/3 PHASE WYE, TOP-END FED, 1 METER INPUT CORD, BLUE	BLUE (RAL 5005)	1M(+178MM-89MM) 3.3'[+3.5"/-1.75"]	6.2kg
P30D05M-BU1B	VERTICAL,(24) C13,(6)C19,MONITORED INPUT, 200-240/346-415V/16A/3 PHASE WYE, TOP-END FED, 2 METER INPUT CORD, BLUE	BLUE (RAL 5005)	2M(+178MM-89MM) 6.5'[+7"/-3.5"]	6.5kg
P30D05M-BU1C	VERTICAL,(24) C13,(6)C19,MONITORED INPUT, 200-240/346-415V/16A/3 PHASE WYE, TOP-END FED, 3 METER INPUT CORD, BLUE	BLUE (RAL 5005)	3M(+254MM-127MM) 10'[+10"/-5"]	6.8kg
P30D05M-GN1A	VERTICAL,(24) C13,(6)C19,MONITORED INPUT, 200-240/346-415V/16A/3 PHASE WYE, TOP-END FED, 1 METER INPUT CORD, GREEN	GREEN (RAL 6001)	1M(+178MM-89MM) 3.3'[+3.5"/-1.75"]	6.2kg
P30D05M-GN1B	VERTICAL,(24) C13,(6)C19,MONITORED INPUT, 200-240/346-415V/16A/3 PHASE WYE, TOP-END FED, 2 METER INPUT CORD, GREEN	GREEN (RAL 6001)	2M(+178MM-89MM) 6.5'[+7"/-3.5"]	6.5kg
P30D05M-GN1C	VERTICAL,(24) C13,(6)C19,MONITORED INPUT, 200-240/346-415V/16A/3 PHASE WYE, TOP-END FED, 3 METER INPUT CORD, GREEN	GREEN (RAL 6001)	3M(+254MM-127MM) 10'[+10"/-5"]	6.8kg
P30D05M-BL2A	VERTICAL,(24) C13,(6)C19,MONITORED INPUT, 200-240/346-415V/16A/3 PHASE WYE, BOTTOM-END FED, 1 METER INPUT CORD, BLACK	BLACK (RAL 9005)	1M(+178MM-89MM) 3.3'[+3.5"/-1.75"]	6.2kg
P30D05M-BL2B	VERTICAL,(24) C13,(6)C19,MONITORED INPUT, 200-240/346-415V/16A/3 PHASE WYE, BOTTOM-END FED, 2 METER INPUT CORD, BLACK	BLACK (RAL 9005)	2M(+178MM-89MM) 6.5'[+7"/-3.5"]	6.5kg
P30D05M-BL2C	VERTICAL,(24) C13,(6)C19,MONITORED INPUT, 200-240/346-415V/16A/3 PHASE WYE, BOTTOM-END FED, 3 METER INPUT CORD, BLACK	BLACK (RAL 9005)	3M(+254MM-127MM) 10'[+10"/-5"]	6.8kg
P30D05M-RD2A	VERTICAL,(24) C13,(6)C19,MONITORED INPUT, 200-240/346-415V/16A/3 PHASE WYE, BOTTOM-END FED, 1 METER INPUT CORD, RED	RED (RAL 3020)	1M(+178MM-89MM) 3.3'[+3.5"/-1.75"]	6.2kg
P30D05M-RD2B	VERTICAL,(24) C13,(6)C19,MONITORED INPUT, 200-240/346-415V/16A/3 PHASE WYE, BOTTOM-END FED, 2 METER INPUT CORD, RED	RED (RAL 3020)	2M(+178MM-89MM) 6.5'[+7"/-3.5"]	6.5kg
P30D05M-RD2C	VERTICAL,(24) C13,(6)C19,MONITORED INPUT, 200-240/346-415V/16A/3 PHASE WYE, BOTTOM-END FED, 3 METER INPUT CORD, RED	RED (RAL 3020)	3M(+254MM-127MM) 10'[+10"/-5"]	6.8kg
P30D05M-WH2A	VERTICAL,(24) C13,(6)C19,MONITORED INPUT, 200-240/346-415V/16A/3 PHASE WYE, BOTTOM-END FED, 1 METER INPUT CORD, WHITE	WHITE (RAL 9003)	1M(+178MM-89MM) 3.3'[+3.5"/-1.75"]	6.2kg
P30D05M-WH2B	VERTICAL,(24) C13,(6)C19,MONITORED INPUT, 200-240/346-415V/16A/3 PHASE WYE, BOTTOM-END FED, 2 METER INPUT CORD, WHITE	WHITE (RAL 9003)	2M(+178MM-89MM) 6.5'[+7"/-3.5"]	6.5kg
P30D05M-WH2C	VERTICAL,(24) C13,(6)C19,MONITORED INPUT, 200-240/346-415V/16A/3 PHASE WYE, BOTTOM-END FED, 3 METER INPUT CORD, WHITE	WHITE (RAL 9003)	3M(+254MM-127MM) 10'[+10"/-5"]	6.8kg
P30D05M-YL2A	VERTICAL,(24) C13,(6)C19,MONITORED INPUT, 200-240/346-415V/16A/3 PHASE WYE, BOTTOM-END FED, 1 METER INPUT CORD, YELLOW	YELLOW (RAL 1023)	1M(+178MM-89MM) 3.3'[+3.5"/-1.75"]	6.2kg
P30D05M-YL2B	VERTICAL,(24) C13,(6)C19,MONITORED INPUT, 200-240/346-415V/16A/3 PHASE WYE, BOTTOM-END FED, 2 METER INPUT CORD, YELLOW	YELLOW (RAL 1023)	2M(+178MM-89MM) 6.5'[+7"/-3.5"]	6.5kg
P30D05M-YL2C	VERTICAL,(24) C13,(6)C19,MONITORED INPUT, 200-240/346-415V/16A/3 PHASE WYE, BOTTOM-END FED, 3 METER INPUT CORD, YELLOW	YELLOW (RAL 1023)	3M(+254MM-127MM) 10'[+10"/-5"]	6.8kg
P30D05M-BU2A	VERTICAL,(24) C13,(6)C19,MONITORED INPUT, 200-240/346-415V/16A/3 PHASE WYE, BOTTOM-END FED, 1 METER INPUT CORD, BLUE	BLUE (RAL 5005)	1M(+178MM-89MM) 3.3'[+3.5"/-1.75"]	6.2kg
P30D05M-BU2B	VERTICAL,(24) C13,(6)C19,MONITORED INPUT, 200-240/346-415V/16A/3 PHASE WYE, BOTTOM-END FED, 2 METER INPUT CORD, BLUE	BLUE (RAL 5005)	2M(+178MM-89MM) 6.5'[+7"/-3.5"]	6.5kg
P30D05M-BU2C	VERTICAL,(24) C13,(6)C19,MONITORED INPUT, 200-240/346-415V/16A/3 PHASE WYE, BOTTOM-END FED, 3 METER INPUT CORD, BLUE	BLUE (RAL 5005)	3M(+254MM-127MM) 10'[+10"/-5"]	6.8kg
P30D05M-GN2A	VERTICAL,(24) C13,(6)C19,MONITORED INPUT, 200-240/346-415V/16A/3 PHASE WYE, BOTTOM-END FED, 1 METER INPUT CORD, GREEN	GREEN (RAL 6001)	1M(+178MM-89MM) 3.3'[+3.5"/-1.75"]	6.2kg
P30D05M-GN2B	VERTICAL,(24) C13,(6)C19,MONITORED INPUT, 200-240/346-415V/16A/3 PHASE WYE, BOTTOM-END FED, 2 METER INPUT CORD, GREEN	GREEN (RAL 6001)	2M(+178MM-89MM) 6.5'[+7"/-3.5"]	6.5kg
P30D05M-GN2C	VERTICAL,(24) C13,(6)C19,MONITORED INPUT, 200-240/346-415V/16A/3 PHASE WYE, BOTTOM-END FED, 3 METER INPUT CORD, GREEN	GREEN (RAL 6001)	3M(+254MM-127MM) 10'[+10"/-5"]	6.8kg

B

B



A

A

02A	06/07/2018	H.XU	MIM	JAWI	ADDED SHEET 2 WITH CONFIGURABLE PART NUMBER TABLE AND DESCRIPTION UPDATED IDENTIFICATION TO INCLUDE CONFIGURABLE OPTION 'DE-CODER'	P30D05M	
01A	07/27/2017	GEORGE	MIM	EDM	INITIAL RELEASE	P30D05M	
REV	DATE	BY	CHK	APR	DESCRIPTION	ECN	

WE ASK THAT YOU CHECK FULLY THE DIMENSIONS, NOTES, AND SIGN THE CLIENT SIGNATURE BOX. THE JOB WILL NOT PROGRESS WITHOUT SIGNED APPROVAL. PLEASE DO NOT DELAY IN RETURNING PROOF AS IT WILL AFFECT DELIVERY.

SIGN _____
DATE _____
PRINT _____

TITLE
INTELLIGENT SERIES PDU
P30D05M-XXYZ
CUSTOMER DRAWING

ITEM REVISION NAME:
DATASHEET FILE NAME:

UNLESS OTHERWISE SPECIFIED DIMENSIONAL TOLERANCE ARE: mm [IN]

Tolerance(mm)
0<L<50 ±0.5
50<L<250 ±1.0
250<L<500 ±1.5
500<L<1000 ±2.5
1000<L<2000 ±4.0

THIRD ANGLE PROJECTION

MATERIAL/COLOR:
N/A

DRAWING NUMBER:
P30D05M_DC

DRAWN BY: DATE: CHK: SCALE:
GEORGE 07/27/2017 SEAN NONE

SHT 2 OF 2 SCALE: B

