



Product designation				Earth leakage relays
Product type designation				RC
<b>General characteristics</b>				
Description				Compact, 1 operating threshold
N° of operating threshold				1
<b>Control circuit</b>				
Toroidal transformer				Incorporated diam. 35mm/1.38"
Adjustments				
	Tripping set-point ( $I_{\Delta n}$ )	(x0.1)	A	0.025...0.25
		(x1)	A	0.25...2.5
		(x10)	A	2.5...25
	Tripping delay time	(tx1)	s	0.02...0.5
		(tx10)	s	0.2...5
Selection of multiplier for $I_{\Delta n}$ and t				By dip switches
Resetting				Configurable automatic or manual by button on front
Test Button				Yes
Shunt circuit control				No
<b>Auxiliary supply</b>				
Auxiliary rated supply voltage $U_s$				110... 125VAC/DC; 220... 240/380... 415VAC
Operational limits				110... 125VAC/DC or 220...240VAC or 380...415VAC
Output contacts				1
Rated frequency			Hz	50...60
Power consumption Max			VA	3
<b>Relay outputs</b>				
Relay state				Normally de-energised
Contact arrangement				1 changeover SPDT (trip)
Rated contact capacity IEC $I_{th}$				5A - 250VAC
<b>Insulations</b>				
Power frequency withstand voltage			kV	2.5kV for 60s

### Indications

Auxiliary voltage available (ON)	Green LED
Relay tripping (TRIP)	Red LED

### Connections

Terminals type	Fixed
Tightening torque for terminals	

max	Nm	0.5
max	lbin	4.5

### Conductor section

AWG/Kcmil

min	24
max	12

IEC

min	mm <sup>2</sup>	0.2
max	mm <sup>2</sup>	2.5

### Operations

Mechanical life	cycles	50000000
Electrical life	cycles	300000

### Ambient conditions

#### Temperature

Operating temperature

min	°C	-10
max	°C	+60

Storage temperature

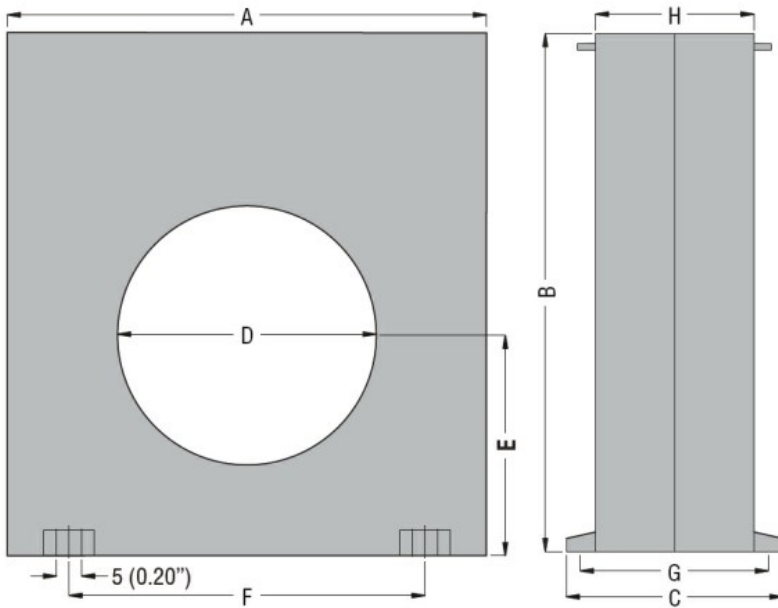
min	°C	-20
max	°C	+80

Relative humidity	%	≤90%
-------------------	---	------

### Housing

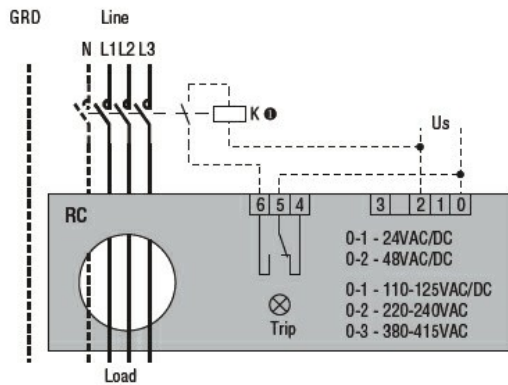
Material	Self-extinguishing polycarbonate
Mounting	35mm DIN rail
Degree of protection	IP20 terminals
Dimensions (W x H x D)	mm 100x110x70
Weight	g 485

### Dimensions



TYPE	A	B	C	D	E	F	G	H
RC35	100 (3.94")	110 (4.33")	70 (2.75")	35 (1.38")	47 (1.85")	60 (2.36")	60 (2.36")	50 (1.97")
RC60	100 (3.94")	110 (4.33")	70 (2.75")	60 (2.36")	47 (1.85")	60 (2.36")	60 (2.36")	50 (1.97")
RC80	150 (5.90")	160 (6.30")	70 (2.75")	80 (3.15")	70 (2.75")	110 (4.33")	60 (2.36")	50 (1.97")
RC110	150 (5.90")	160 (6.30")	70 (2.75")	110 (4.33")	70 (2.75")	110 (4.33")	60 (2.36")	50 (1.97")

### Wiring diagrams



### Certifications and compliance

Compliant with standards

IEC/EN 60947-2

Certificates

EAC

### ETIM classification

ETIM 8.0

EC001445 -  
Residual current  
monitoring relay