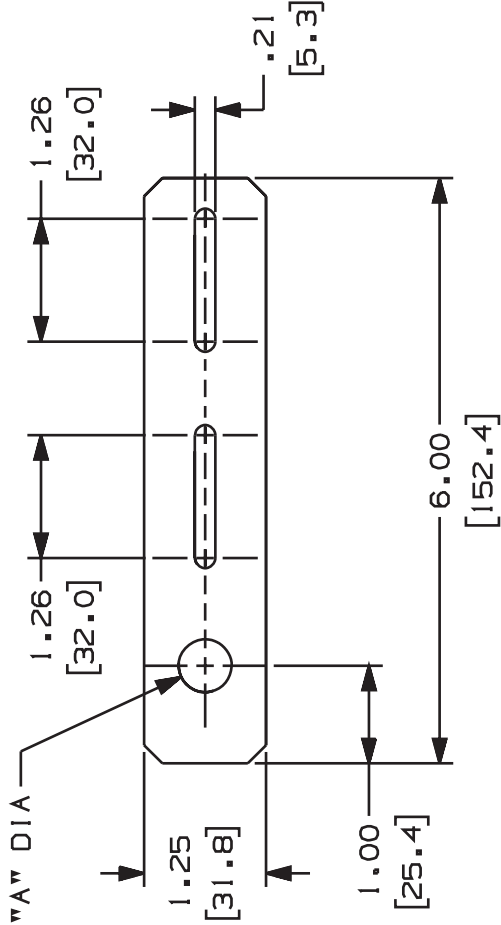


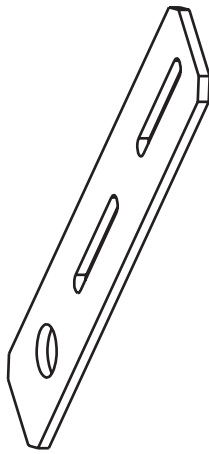
THIS COPY IS PROVIDED ON A RESTRICTED BASIS AND IS NOT TO BE USED IN ANY WAY DETRIMENTAL TO THE INTERESTS OF PANDUIT CORP.

PANDUIT P/N	"A"	WEIGHT
FTRBN12	.54 (13.7)	3.8 LB/10 PCS. (1720 G/10 PCS.)
FTRBN12M	.54 (13.7)	3.8 LB/10 PCS. (1720 G/10 PCS.)
FTRBN58	.65 (16.5)	4.9 LB/10 PCS. (2220 G/10 PCS.)



NOTES:

- SEE CURRENT CATALOG FOR ADDITIONAL PART SUFFIXES TO INDICATE COLOR AND OR PACKAGE QUANTITY. BRACKET ATTACHES TO NEW 1/2", 5/8", OR 12mm THREADED ROD (NOT INCLUDED). FTRBN12 AND FTRBN58 KITS CONTAIN ONE BRACKET AND TWO 10-32 x 1/2" PAN HEAD SCREWS WITH LOCKWASHERS AND HEX NUTS, AND TWO 1/2" OR 5/8" HEX NUTS WITH LOCKWASHERS. FTRBN12M KIT CONTAINS ONE BRACKET, AND TWO M5X0.8X16mm PAN HEAD SCREWS WITH LOCKWASHERS AND HEX NUTS, AND TWO 12mm HEX NUTS WITH LOCKWASHERS.
-
-
-
- DIMENSIONS IN PARENTHESIS ARE IN METRIC.



CAD FILENAME/LAYERS

D35245BP_DC_FTRBN_01.PRT

PANDUIT

CORP. TINLEY PARK, ILLINOIS

FIBER-DUCT BRACKET KIT (WITH NEW ROD)
(FTRBN12, FTRBN58, FTRBN12M)
CUSTOMER DRAWING

UNLESS OTHERWISE SPECIFIED,
DIMENSIONAL TOLERANCES ARE:
(.X) ± .XXX
(.XX) ± .04 (1.0) ANGLES ±

UNLESS OTHERWISE SPECIFIED,
ALL DIMENSIONS ARE GIVEN
IN INCHES, THIRD ANGLE PROJECTION.

DRAWN BY MAT'L

TPC

DATE 11-20-96

CHK'D CEF

SCALE NONE

DWG NO. 35245-16

11 GAGE
C.R.S.

SIZE A

1 1-18-99 DW C. REVISED NOTE 3.1 D. ADDED 12mm THREADED ROD TO NOTE 2. A. ADDED FTRBN12M PART. B. ADDED FTRBN12M NOTE 4.

R 11-20-96 TPC CEF

RELEASED TO PRODUCTION

BY CHK

DESCRIPTION

REV DATE

ECN - R

CUST CEF

SUP