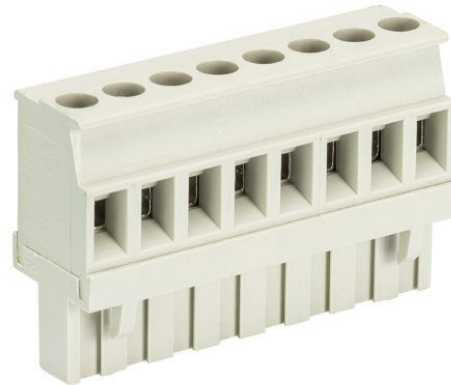


Fiche produit

Article n° 25.345.4253.0

Connecteur PCB 8213 B / 12 VR OB



|                   |               |
|-------------------|---------------|
| Article n°        | 25.345.4253.0 |
| EAN               | 4015573191310 |
| Unité de commande | 50 Piece(s)   |

certificats/approbations



Données techniques

**général**

|                                   |                 |
|-----------------------------------|-----------------|
| Espacement modulaire              | 5,08 mm         |
| Type de connexion                 | Connexion à vis |
| processus de soudure              | Aucun           |
| Répartiteur compact               | boîte           |
| Nombre de pôles                   | 12              |
| Marquage                          | Aucun           |
| Fixation                          | Aucun           |
| Sens de branchement du connecteur | 90°             |

**Données techniques**

|                               |                     |
|-------------------------------|---------------------|
| Section transversale nominale | 2,5 mm <sup>2</sup> |
| Courant nominal               | 12 A                |
| Catégorie de surtension I     | 1000 V              |
| Catégorie de surtension II    | 400 V               |
| Catégorie de surtension III   | 250 V               |
| Tension nominale d'impulsion  | 4 kV                |
| longueur de fil               | 6 mm                |

**données de connection**

|                             |                      |
|-----------------------------|----------------------|
| Section minimum fil rigide  | 0,14 mm <sup>2</sup> |
| Section maximum fil rigide  | 2,5 mm <sup>2</sup>  |
| Section minimum multi-brins | 0,14 mm <sup>2</sup> |
| Section maximum multi-brins | 2,5 mm <sup>2</sup>  |
| longueur de fil             | 6 mm                 |

**Données techniques UL/CSA**

|                              |           |
|------------------------------|-----------|
| Section traversante norme UL | 22-12 AWG |
| Tension UL                   | 300 V     |
| Câblage actuel               | 15 A      |

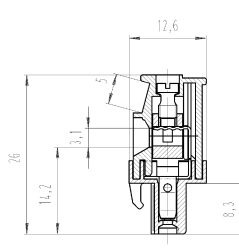
|                               |           |
|-------------------------------|-----------|
| Câblage d'usine actuelle      | 15 A      |
| Section traversante norme CSA | 22-12 AWG |
| Tension CSA                   | 300 V     |
| CSA actuel                    | 15 A      |

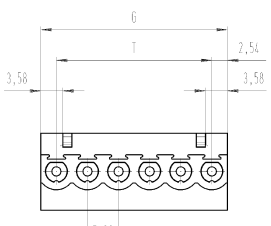
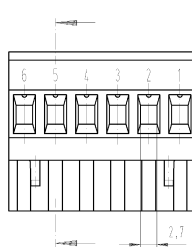
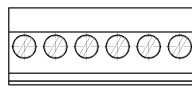
**Autre**

|                              |                  |
|------------------------------|------------------|
| Type de matériau d'isolation | Thermo-plastique |
| Couleur                      | gris             |
| hauteur                      | 26 mm            |
| Longueur                     | 60,96 mm         |
| profondeur                   | 12,6 mm          |
| matière Vis de fixation      | CuSn/Steel       |
| matière de base de contact   | CuSn             |
| matière surface de contact   | Sn               |

**Dessin technique**

Gezeichnet:  
drawn  
**25.345.0653.F**



|    |                  |                     |
|----|------------------|---------------------|
| .F | Farbe<br>colour  | Bedruckung<br>print |
| .0 | grau<br>grey     | schwarz<br>black    |
| .1 | schwarz<br>black | weiß<br>white       |

| Teile-Nummer<br>part number | Pol<br>pole | G     | T     | Typ<br>type  | Teile-Nummer<br>part number | Pol<br>pole | G     | T     | Typ<br>type  |
|-----------------------------|-------------|-------|-------|--------------|-----------------------------|-------------|-------|-------|--------------|
| 25.345.0253.F               | 2           | 10,16 | 5,08  | 8213 B/ 2 VR | 25.345.1453.F               | 14          | 31,12 | 40,04 | 8213 B/14 VR |
| 25.345.0353.F               | 3           | 15,24 | 10,16 | 8213 B/ 3 VR | 25.345.1553.F               | 15          | 36,20 | 31,12 | 8213 B/15 VR |
| 25.345.0453.F               | 4           | 20,32 | 15,24 | 8213 B/ 4 VR | 25.345.1653.F               | 16          | 41,28 | 36,20 | 8213 B/16 VR |
| 25.345.0553.F               | 5           | 25,40 | 20,32 | 8213 B/ 5 VR | 25.345.1753.F               | 17          | 46,36 | 41,28 | 8213 B/17 VR |
| 25.345.0653.F               | 6           | 30,48 | 25,40 | 8213 B/ 6 VR | 25.345.1853.F               | 18          | 51,44 | 46,36 | 8213 B/18 VR |
| 25.345.0753.F               | 7           | 35,56 | 30,48 | 8213 B/ 7 VR | 25.345.1953.F               | 19          | 56,52 | 51,44 | 8213 B/19 VR |
| 25.345.0853.F               | 8           | 40,64 | 35,56 | 8213 B/ 8 VR | 25.345.2053.F               | 20          | 61,60 | 56,52 | 8213 B/20 VR |
| 25.345.0953.F               | 9           | 45,72 | 40,64 | 8213 B/ 9 VR | 25.345.2153.F               | 21          | 66,68 | 61,60 | 8213 B/21 VR |
| 25.345.1053.F               | 10          | 50,80 | 45,72 | 8213 B/10 VR | 25.345.2253.F               | 22          | 71,76 | 66,68 | 8213 B/22 VR |
| 25.345.1153.F               | 11          | 55,88 | 50,80 | 8213 B/11 VR | 25.345.2353.F               | 23          | 76,84 | 71,76 | 8213 B/23 VR |
| 25.345.1253.F               | 12          | 60,96 | 55,88 | 8213 B/12 VR | 25.345.2453.F               | 24          | 81,92 | 76,84 | 8213 B/24 VR |

Weitere Daten siehe Katalog  
further data see catalog

|   |  |   |  |   |  |
|---|--|---|--|---|--|
| Toleranz nach DIN 7167/ tolerance system acc. to DIN 7167   |  | Größen GD   |  | Sitzflächen- und Lokationsrisse nach ISO 10110/ISO 10110  |  |
| This DIN standard declares the tolerance principle. According to the tolerance principle the deviations of form and position are limited by the size tolerance. |  | GD - Zeichnung, keine manuellen Änderungen<br>GD - Drawing, no manual modifications allowed |  | Sitzflächen- und Lokationsrisse nach ISO 10110/ISO 10110<br>Grooves by which the assembly is prohibited /<br>detectable hazardous substances to be detected |  |
| Freitoleranz nach<br>General tolerance  |  | 2:1   |  | Zeichnung Nr./Drawing No.<br><b>25.345.2453.0 01K</b>   |  |
| Material/Material   |  | 20087   |  | Werkstoff/Material  |  |
| 2:1   |  | 2:1   |  | 2:1   |  |
| Wieland   |  | Wieland   |  | Wieland   |  |
| Typ   |  | Typ   |  | Typ   |  |
| 8213 B/   |  | 8213 B/   |  | 8213 B/   |  |
| 2-24 VR   |  | 2-24 VR   |  | 2-24 VR   |  |
| m.Steck- und Schraubansch. Reststrom 5,08/Plug-in 5,08  |  | m.Steck- und Schraubansch. Reststrom 5,08/Plug-in 5,08                                      |  | m.Steck- und Schraubansch. Reststrom 5,08/Plug-in 5,08  |  |
| pluggable PCB terminal rising cage clamp system   |  | pluggable PCB terminal rising cage clamp system   |  | pluggable PCB terminal rising cage clamp system   |  |