



**finder**<sup>®</sup>  
SWITCH TO THE FUTURE



Products

# PIR movement detectors for corridors

## 18 Series



Type 18.4K.9.030.0000

### Features

Surface or recessed ceiling mounting

- Supply voltage via KNX bus
- Sensing area up to 120m<sup>2</sup>: 4x30m
- Two independent and separate areas and two sensors
- Independent adjustment of PIR sensitivity in each area
- Independent digital outputs for each sensor / area, in order to identify the direction of movement
- Adjustment of ambient light threshold
- Master / Slave connection to extend the detection area




# PIR movement and presence detector

## 18 Series



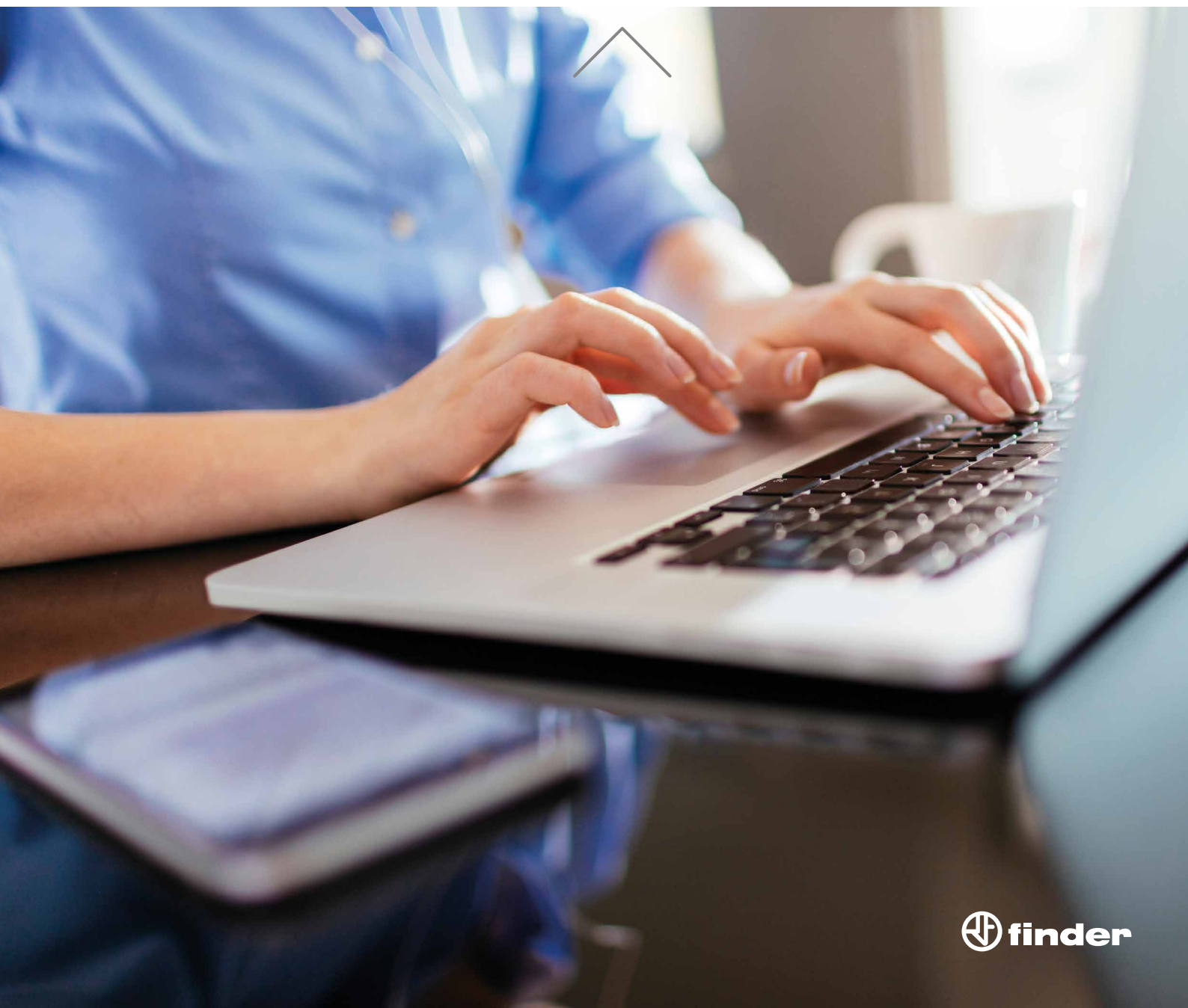
Type 18.5K.9.030.0000

Approval 

### Features

Surface or recessed ceiling mounting

- Supply voltage via KNX bus
- Sensing area up to 64m<sup>2</sup>: 8x8 m movement, 4x4 m presence
- 2 outputs for load control (Lighting, HVAC etc.)
- 1 output – movement/presence detected
- Adjustment of ambient light threshold and PIR sensitivity
- Master / Slave connection to extend the detection area
- Selectable function to inhibit ambient light threshold control
- Reporting of light level and movement status



# Compact and powerful switching actuator with 6 relay outputs

## 19 Series



Type 19.6K.9.030.4300

### Features

- Bistable relay ENEC approved (Maximum peak current up to 120 A)
- 35 mm rail (EN 60715) mount, 70 mm wide
- 6 output contacts rated 16 A 250 V AC, individually configurable NO or NC
- Nominal lamp rating:
  - 230 V halogen: 2000 W
  - 230 V LED or CFL: 400 W
  - Fluorescent tubes: 750 W
  - Single phase motor load: 0.5 kW
- Time functions (ON, OFF, Blink, Staircase)
- Independent logic and analog functions for each output (AND, OR, XOR, THRESHOLD, WINDOW)
- Scenario Management



# Universal dimmer with 2 channels

## 400W 230 VAC

### 15 Series

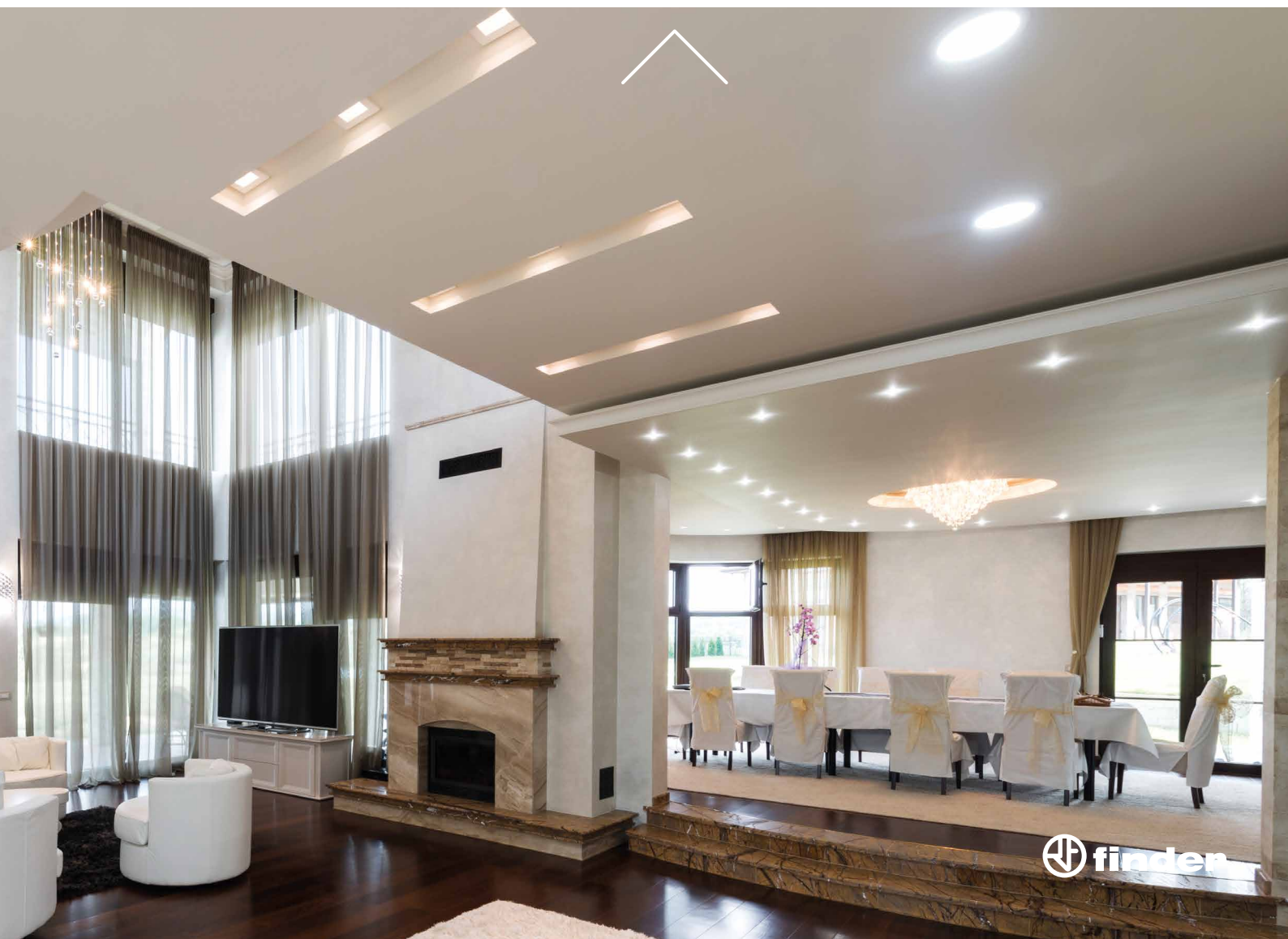


Type 15.2K.8.230.0400

#### Features

**Suitable for LED dimmable lamps (100W), CFL dimmable lamps, electromechanical and electronic transformers**

- Leading and Trailing edge dimming methods selectable via ETS
- Each channel can be manually regulated via 2 buttons on front for increasing or decreasing the brightness
- Thermal protection and short-circuit protection
- 72 mm wide (4 modules), 35 mm rail mount
- 2 output 400W 230 V AC
- Nominal lamp rating:
  - Halogen: 400 W
  - dimmable LED: 100 W
  - dimmable electronic transformer: 100 W
- LED status indicator for each output
- Scenario Management



# KNX power supply with bus output 30 V DC - 640mA

## 78 Series

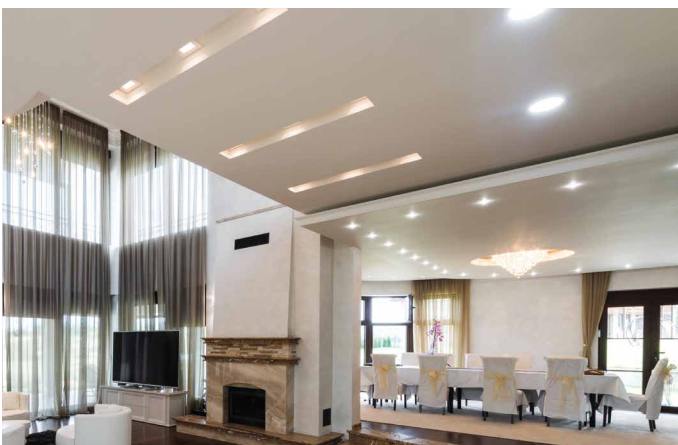
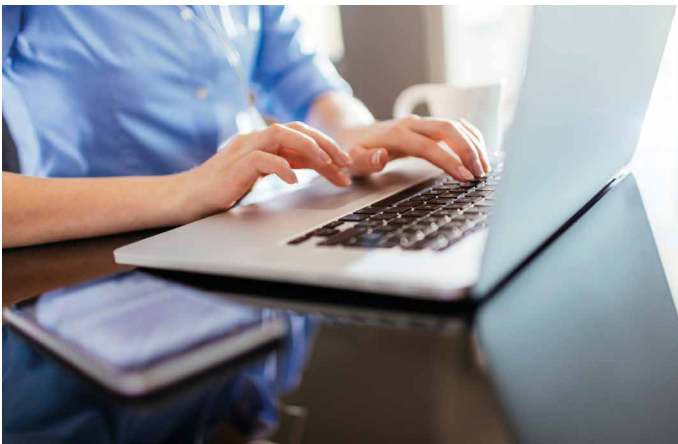


Type 78.2K.1.230.3000

### Features

- 35 mm rail mount. 72 mm (4 modules) wide
- Nominal voltage 110...230 V AC 50/60 Hz, 110 VDC
- KNX bus output 30 V DC - 640mA
- 3 LED status indicator: Green: correct voltage  
Red: Current over load  
Red: Reset confirmation
- Button for 25 sec. Bus reset
- Thermal protection





The **KNX\*** bus system and standard allows the realization of flexible control systems to achieve energy-efficiency and comfort in residential or commercial buildings.

**KNX** complies with:

- European Standards (CENELEC EN 50090 and CEN EN 13321-1)
- International Standard (ISO/IEC 14543-3)
- Chinese Standard (GB/T 20965)
- US Standard (ANSI/ASHRAE 135)

\* Note that this trademark and trade name is not the property of Finder SpA or any of its associated companies, and is referred to in this sheet for the purposes of technical information only.

# Finder in the world



Discover the worldwide network at [findernet.com](http://findernet.com)



FINDER S.p.A. Via Drubiaglio, 14 - 10040 ALMESE (TO) - ITALY - tel +39 011 9346211 - fax +39 011 9359079

FINDER reserves the right to alter characteristics at any time without notice. FINDER assumes no liability for damage to persons or property, caused as a result of the incorrect use or application of its products.

March 2018 - KNX products