

PanView iQ™ (PViQ™) Networked Power Outlet Units for Net-Access™ Cabinets

PANDUIT®

SPECIFICATION SHEET

specifications

Power outlet units shall incorporate standard IEC-13 compliant receptacles using twist lock or IEC-309 plug for input power. Power outlet units shall have twelve outlets with 10 foot cord and shall have black powder-coated finish. The power outlet units shall have two 30 amp circuits and be capable of mounting vertically to the Net-Access™ Cabinet or Panduit 4-post rack. As part of the Physical Infrastructure Manager™ (PIM™) Software Platform, the PIM-POWER Module shall contain all of the functionality associated with management of intelligence-enabled PanView iQ™ (PViQ™) Power Outlet Units (POUs). This shall include power monitoring, control, administrative functions (e.g. setting alarm threshold parameters) and power-specific reports.



technical information

Dimensions:	PV12LN: 24.12"H x 1.75"W x 7"D (613mm x 44.5mm x 178mm), 0 RU PV12PN: 24.12"H x 1.75"W x 7"D (613mm x 44.5mm x 178mm), 0 RU
Power outlet unit mounting:	Vertical power outlet units provide up to twelve outlets and do not occupy any rack spaces
Power outlet unit packaging:	All power outlet units include tool-less mounting buttons and mounting brackets

key features and benefits

Remote access to power consumption data	Web-based GUI provides real-time power consumption information, which can be utilized to minimize down-time and maximize performance for improved network reliability
Daisy chain power outlet unit network connections	Allows up to 50 power outlet units to be managed via a single port, which provides easier installation and utilizes fewer switch ports
Integrated power monitoring and management	Amps, volts and watts providing critical information on current draw which improves power manageability for network reliability
Alarm messaging capability	Included user defined alarm/messaging capabilities when user defined parameters have been exceeded and alerts user to over-consumption of power and power related issues to maximize network availability
Outlets align with rack units	Allows for optimization and standardization of equipment power cord lengths; reduces cord slack and congestion behind the equipment, which enhances thermal management
Circuit breakers	Interrupts system over-current conditions, minimizing potential power system disruption for increased reliability
Twist lock plug	Maintains a secure connection and prevents accidental power interruption
Vertical mounting	Enables positioning of power strips; closer to active equipment; eliminates power cord slack and improves flexibility of power outlet unit mounting locations
Mounting buttons	Allows tool-less mounting of power strips for faster installations
Plug retention device	Prevents accidental disconnection of power cable plugs from power outlet unit receptacles

Vertical 30 Amp, 240V

NEMA L6-30P plug:	PV12LN
IEC309 plug:	PV12PN
Power Measurement Terminology	
Amps:	Current
Volts:	Potential
Watts:	Power
IEC (International Electrotechnical Commission Standard)	
Highly popular since IEC plugs can output either 125 or 250 Volts	
NEMA (National Electrical Manufacturers Association) Twist Lock Plug	
Locks into place, preventing accidental power losses to critical equipment	
Networked Power Outlet Unit (POU)	
Remote manageable power platform	

Server Cabinet

Net-Access™:	CS1 CS2 CS3
---------------------	-------------------

Switch Cabinet

Net-Access™:	CN1 CN2 CN3
---------------------	-------------------

4 Post Racks

7' version 30" depth	
#12-24	
Threaded rails:	R4P
Cage nut rail:	R4PCN
7' version 23" depth	
#12-24	
Threaded rail:	R4P23
Cage nut rail:	R4P23CN
7' version 36" depth	
#12-24	
Threaded rails:	R4P36
Cage nut rail:	R4P36CN
7' version 42" depth	
#12-24	
Threaded rail:	R4P42
Cage nut rail:	R4P42CN

Power Cord and Retention Device

C13 – C14 end:	PC14C13BL1.5 PC14C13BL2 PC14C13BL3
-----------------------	--

Plug Retention Device:

Black:	PRPC13-60
Ivory:	PRPC13-69

Power Cord/Plug Retention Kit

Part number:	PC14C13-Kit
(1) Black 1.5' C13 to C14 power cord	
(1) Black 2' C13 to C14 power cord	
(1) Black plug retention device	
(1) Ivory plug retention device	

PanView iQ™ IEC60320 C14 to NEMA5-15R Adapters

PViQ™ C14 Power Adapter (US):	PVQ-C14ADPTR-S
PViQ™ C14 Power Adapter (Japan):	PVQ-C14ADPTR-J

PIM™ Software Platform and Modules

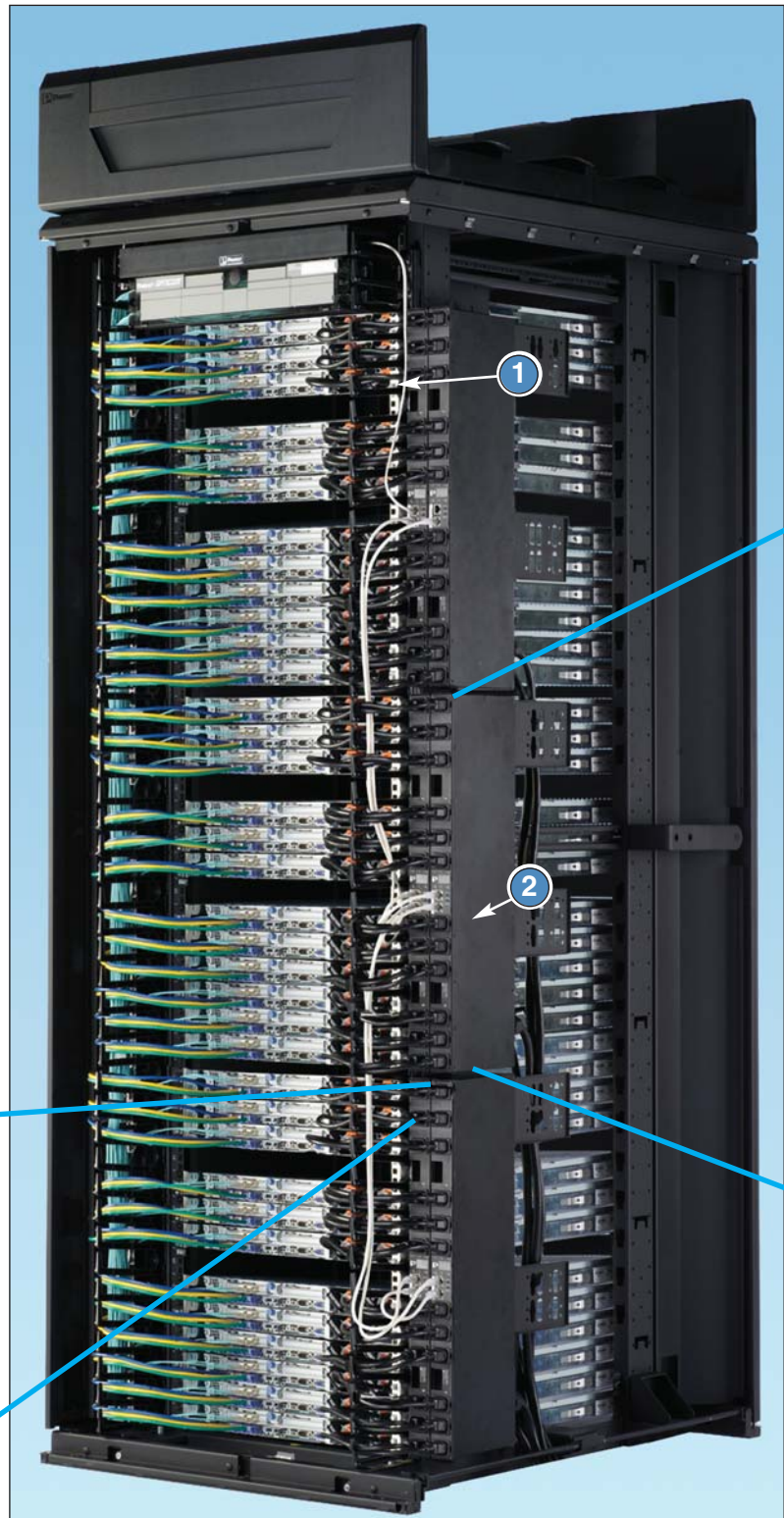
Base functionality module:	PIM-BASE
Power management module:	PIM-POWER
Maintenance, support and warranty agreement:	PIM-CAMA
Software and documentation:	PIMS-MEDIA

PanView iQ™ (PViQ™) Networked Power Outlet Units for Net-Access™ Cabinets

Panduit vertical power outlet units safely and efficiently manage and distribute power to allow multiple pieces of equipment to share a single power connector to enhance scalability of network build outs and to monitor (in real-time) power availability to minimize risk for critical network operations for improved network reliability. Mounting flexibility allows quick and easy installation and when used with Panduit Net-Access™ Cabinets and 4-Post Racks, the user receives a complete networking solution that will satisfy data center requirements today and into the future.

Vertical Power Outlet Units

- 1 Outlets align with rack units**
 - Vertical 0 RU mounting does not occupy rack units
 - Allows for optimization and standardization of power cord lengths
 - Reduces cord slack and congestion behind the equipment, which enhances thermal management
- 2 High Power Density**
 - 30 amps per power outlet unit
 - Six power outlet units can be mounted on one side of the Net-Access™ Cabinet or 4-post rack providing 90 amps redundant power in the space of 2 traditional 66" vertical power outlet units
- 3 Intelligent Monitoring**
 - Monitor key parameters via the network
 - LED display on unit provides voltage, amperage and power usage
- 4 Integrated Circuit breakers**
 - (2) 15 amp magnetic breaker
 - (2) Green LED power on indicators
- 5 Mounting Features**
 - Tool-less mounting
 - 14 RU vertical power outlet unit with 12 – C13 outlets
- 6 Plug Retention**
 - Slots adjacent to outlets accommodate Panduit's plug retention device to ensure a secure connection



Power Metering and Remote Access

Voltage, Current and Power Indicators

LED

Top Breaker 1, Aggregate and Bottom Breaker 2 Indicators

Auto Scroll, Manual Advance and Reset Buttons

10/100 Network Interface (RJ45)

7 Integrated selectable power LED

- Displays volts, amps (current), and kilovolt-ampere (power)
- Provides real-time power consumption for improved power manageability and network reliability for each circuit
- Can display IP and MAC addresses

8 Network Connections

- Two RJ45 connections allow daisy chaining of power outlet units
- Network connections allows up to 50 power outlet units to be managed via a single port
- Provides easier installation and utilizes fewer switch ports

WORLDWIDE SUBSIDIARIES AND SALES OFFICES

PANDUIT CANADA
Markham, Ontario
cs-cdn@panduit.com
Phone: 800.777.3300

PANDUIT EUROPE LTD.
London, UK
cs-emea@panduit.com
Phone: 44.20.8601.7200

PANDUIT SINGAPORE PTE. LTD.
Republic of Singapore
cs-ap@panduit.com
Phone: 65.6305.7575

PANDUIT JAPAN
Tokyo, Japan
cs-japan@panduit.com
Phone: 81.3.6863.6000

PANDUIT LATIN AMERICA
Guadalajara, Mexico
cs-la@panduit.com
Phone: 52.33.3777.6000

PANDUIT AUSTRALIA PTY. LTD.
Victoria, Australia
cs-aus@panduit.com
Phone: 61.3.9794.9020

For a copy of Panduit product warranties, log on to www.panduit.com/warranty

For more information

Visit us at www.panduit.com

Contact Customer Service by email: cs@panduit.com
or by phone: 800.777.3300 and reference RKSP44

