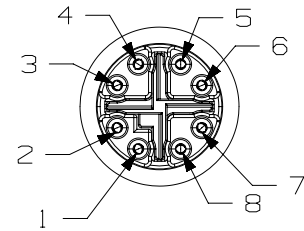
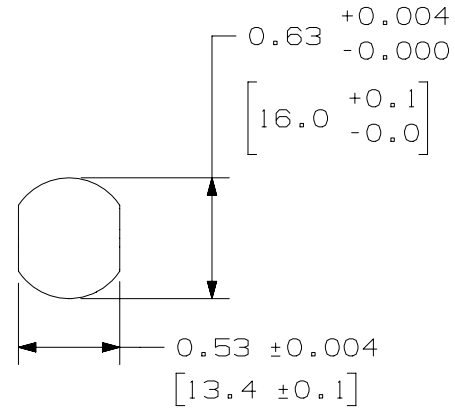


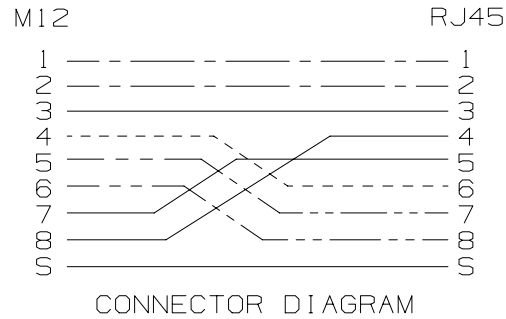
THIS COPY IS PROVIDED ON A RESTRICTED BASIS AND IS NOT TO BE USED IN ANY WAY DETRIMENTAL TO THE INTERESTS OF PANDUIT CORP.



PIN ASSIGNMENTS
FRONT VIEW



M12 RECOMMENDED
PANEL CUT-OUT



PRODUCT SPEC	N/A	PACKAGING SPEC	N/A
PART NUMBER	ICAM12X90RJS	WORK INSTRUCTION	N/A
INSPECTION INSTRUCTION NUMBER	N/A	FMEA & CONTROL PLAN NUMBER	N/A

TITLE								
Industrial M12, X-Code, 8-Pin Female to RJ45 Cat.6A 90-Degree Jack Adapter CUSTOMER DRAWING								
ITEM REVISION NAME	00162LAB/00							
DATASET FILE NAME	00162LAB_DC02/00A							
UNLESS OTHERWISE SPECIFIED, DIMENSIONAL TOLERANCES ARE: IN [mm]		MATERIAL:						
.x ± .1 [2.54] .xxx ± .005 [.127] .xx ± .01 [.25] ANGLES ± 5 °		SEE NOTE 6.B						
DRAWN BY: BJJ DATE: 3-7-17 CHK: JAV SCALE: FULL THIRD ANGLE PROJECTION		DRAWING NUMBER: 00162LAB-02						
REV	DATE	BY	CHK	APR	DESCRIPTION	ECN	SHT 2 OF 2	SIZE

R	3-21-17	BJN	JAV	SVASH	SEE SHEET 1 FOR REVISION HISTORY	00162LAB-02
REV	DATE	BY	CHK	APR	DESCRIPTION	ECN

D10100DA/14