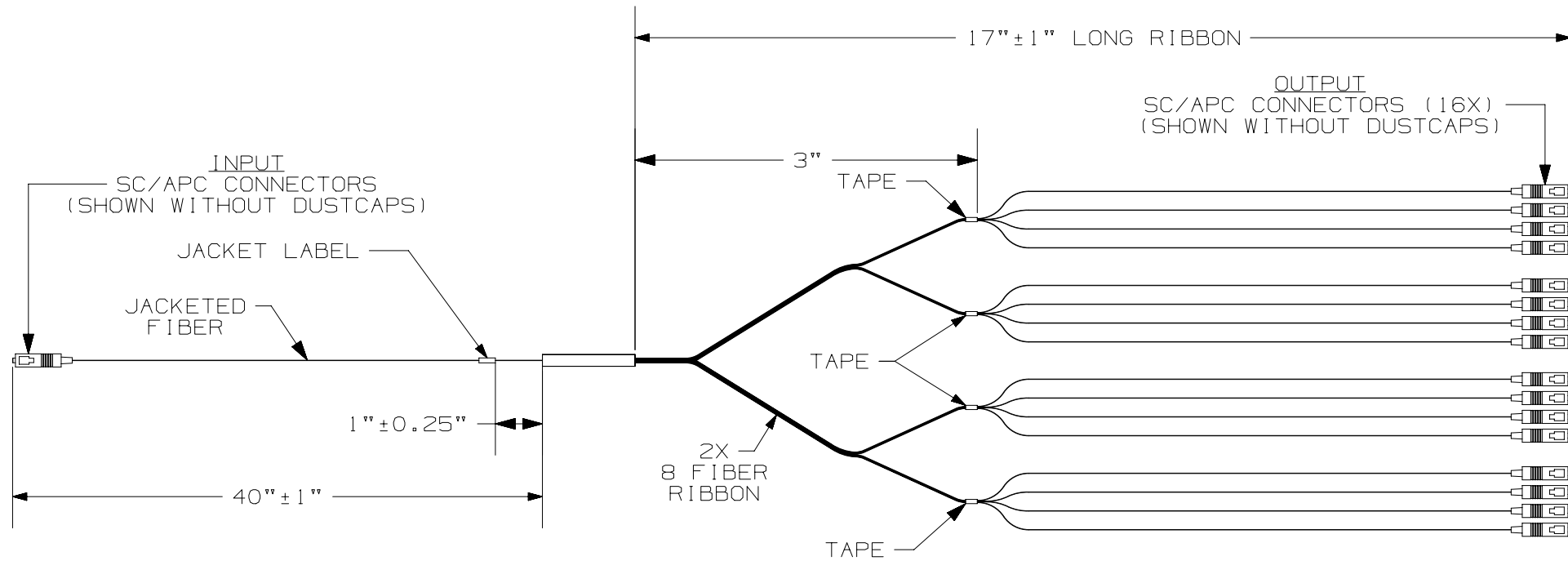


TABLE 1 - FPONCS1X16										
PART NUMBER	DESCRIPTION	LONG RIBBON QTY	MAXIMUM INSERTION LOSS (1260-1650nm)	MAXIMUM INSERTION LOSS UNIFORMITY	NUMBER OF INPUTS	NUMBER OF OUTPUTS	CONNECTOR QTY	SPLITTER ENCLOSURE DIMENSIONS		
								LENGTH (L)	WIDTH (W)	THICKNESS (T)
FPONCS1X16	FIBER OPTIC PLC SPLITTER 1 X 16 WITH SC-APC CONNECTORS	2	14.0	1.5	1	16	17	1.58 [40]	0.16 [4]	0.16 [4]

* LOSS VALUES DO NOT INCLUDE CONNECTOR LOSS



PON SPLITTER ASSEMBLY DIAGRAM

- NOTES**
- IDENTIFICATION:
PON PLC SPLITTER WITH SC-APC CONNECTORS
 - FIBER:
A. TYPE: 9/125um (SINGLEMODE)
B. JACKET DIAMETER: 900 MICRON
 - CONNECTORS:
A. TYPE: SC/APC
B. COLOR: GREEN
 - TECHNICAL AND LINK LOSS SPECIFICATIONS:
SEE TABLE
 - ALL PURCHASED ITEMS MUST CONFORM TO C2-0834 PANDUIT SPECIFICATION FOR CHEMICAL SUBSTANCES TO BE CONTROLLED IN PRODUCT AND PACKAGING.

							FIBER OPTIC PLC SPLITTER WITH SC-APC CONNECTORS CUSTOMER DRAWING							
							ITEM REVISION NAME 00472ECC/00							
							DATASET FILE NAME 00472ECC_DC/00A							
							UNLESS OTHERWISE SPECIFIED, DIMENSIONAL TOLERANCES ARE: IN [mm] .x ± .1 [2.54] .xxx ± .005 [.127] .xx ± .01 [.25] ANGLES ± 1°							
							PART NUMBER FPONCS1X16							
							DRAWING NUMBER: 00472ECC-DC							
00A	02-21-20	SAT	SCAL	SKH	INITIAL RELEASE		00472ECC-DC		THIRD ANGLE PROJECTION					
REV	DATE	BY	CHK	APR	DESCRIPTION		ECN		DRAWN BY	DATE	CHK	SCALE	SHT 1 OF 1	
									SAT	02-18-20	SCAL	NONE	B	

NXGLOBAL_BSIZE