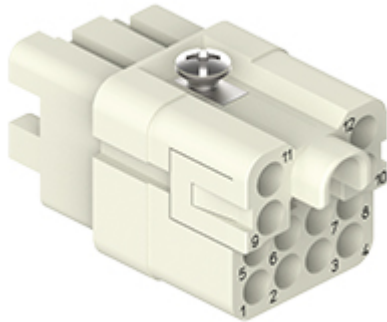


Part number

# CQF 12 CIF



Female insert, CQ series, crimp connection, 12 poles + PE, 7,5 A 250 V 4 kV 3, size "21.21", for PCB adapter CIF Q12 2.4, PE contact pin diameter 1 mm

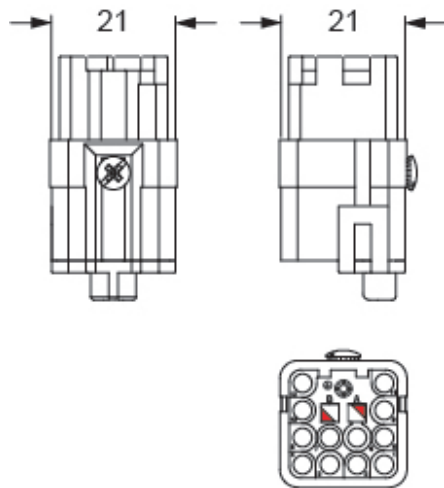
| Product description                           |  | Material properties                 |  |
|---|--|-------------------------------------|--|
| <b>Product type</b>                           | Insert   | <b>Main material</b>                | Polycarbonate (PC)   |
| <b>Series</b>                                 | CQ   | <b>Colour</b>                       | RAL 7032 grey  |
| <b>Connection type</b>                        | Crimp connection   |                                     | Compliant with exemption 6(c): copper alloy containing up to 4% lead by weight |
| <b>Gender</b>                                 | Female   | <b>RoHs conformity</b>              |  |
| <b>N. of poles</b>                            | 12 poles +   | <b>China RoHs - EFUP</b>            | 50   |
| <b>Size</b>                                   | Size "21.21"   | <b>REACH SVHC substances</b>        | Yes<br>Lead  |
| <b>Specification</b>                          | PE contact pin diameter 1 mm<br>For PCB adapter            | <b>SCIP number</b>                  | 1a9c93ff-0445-4a16-81e3-1609ac5274d6   |
| Technical data                                |  | Approvals / Standards               |  |
| <b>Current</b>                                | 7 A  | <b>Certifications</b>               | DNV  |
| <b>Voltage</b>                                | 250 V  | <b>UL</b>                           | ECBT2  |
| <b>Rated impulse withstand voltage</b>        | 4 kV   | <b>cUL</b>                          | ECBT8  |
| <b>Pollution degree</b>                       | 3  | <b>General ordering information</b> |  |
| <b>IP degree of protection</b>                | IP20 without enclosure, IP66/IP67/IP68/IP69 with enclosure | <b>EAN13 code</b>                   | 8015747270694  |
| <b>Further technical details</b>              |  | <b>eCl@ss 8.1</b>                   | 27440205   |
| <b>Characteristics according to EN 61984</b>  | 7,5 A 250 V 4 kV 3   | <b>ETIM 7.0</b>                     | EC000438   |
| <b>Weight</b>                                 | 12,00 g  | <b>Packaging Information</b>        |  |
| <b>Operating temperature range (min, max)</b> | -40 °C ... +125 °C   | <b>Sub-packaging description</b>    | Plastic bag  |
|   |  | <b>Sub-packaging quantity</b>       | 1 Pcs  |
|   |  | <b>Sub-packaging EAN barcode</b>    | 8015747270717  |

Part number

# CQF 12 CIF



## Catalogue drawings



---

## Notes

Dimensions shown in mm are not binding and may be changed without notice.

---