



Product designation

Direct-on-line
starter

Product type designation

M2R02512...B2

Electrical features

Relay adj range

A 17-23

IEC technical characteristics ($\leq 440V$)

le	A	23
kW	kW	11

Components

Starter enclosure standard supplied

M2RA

Contactor standard supplied

BF2510A

Thermal relay standard supplied

RF382300

Mechanical features

Weight

g 1165

Ambient conditions

Operating temperature

min	°C	-25
max	°C	+60

Storage temperature

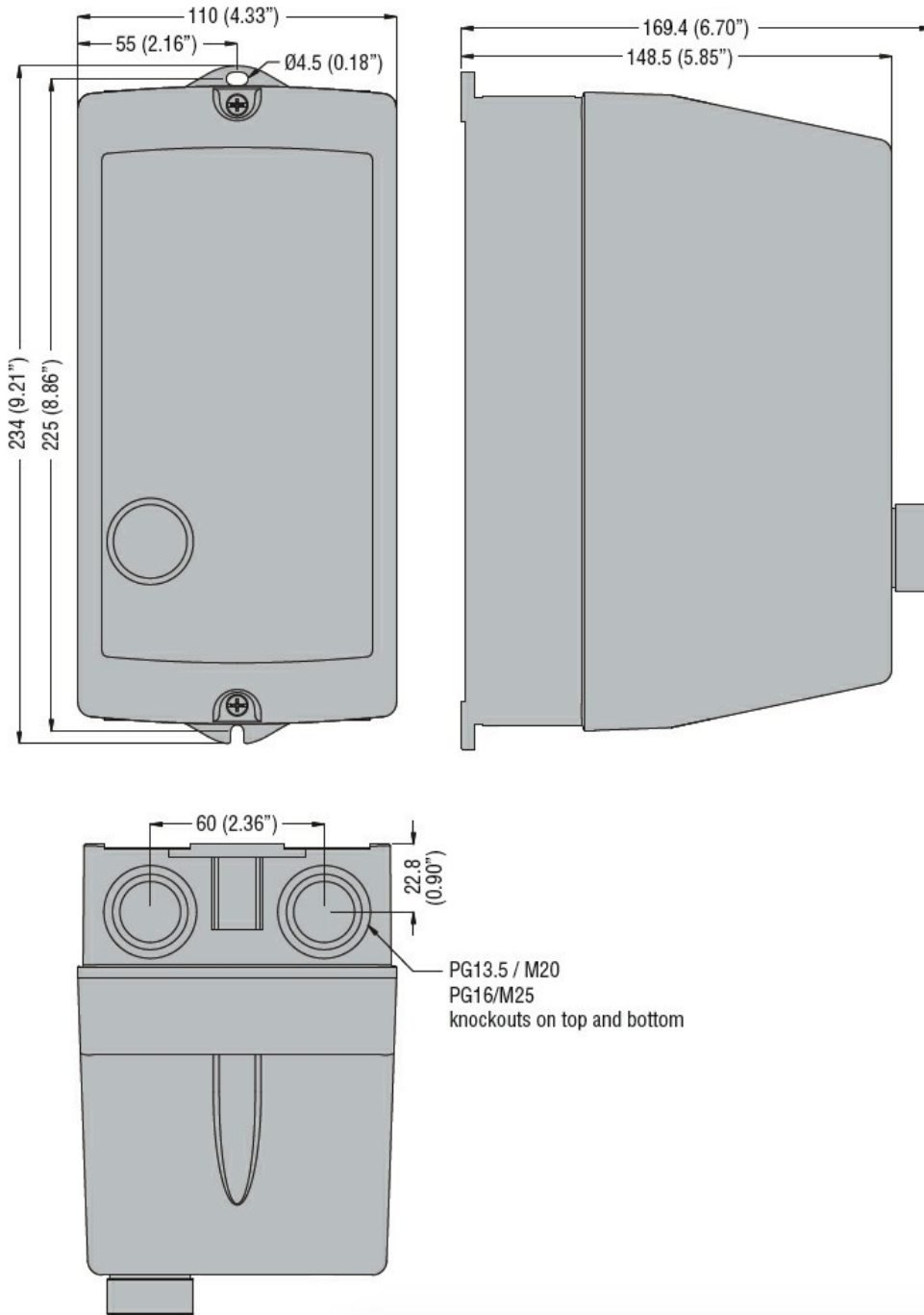
min	°C	-40
max	°C	+70

Resistance & Protection

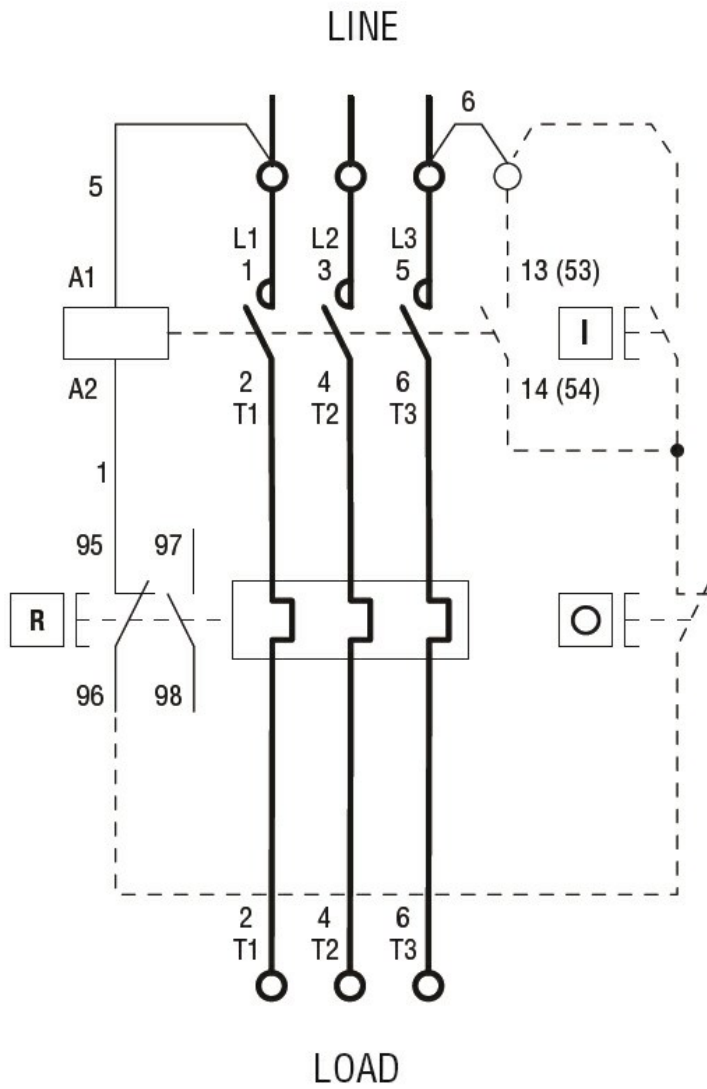
Frontal IP degree

IP65

Dimensions



Wiring diagrams



R = Reset; I = Start; O = Stop

Certifications and compliance

Compliance

IEC/EN 60947-1
IEC/EN 60947-4-1
UL508 CSA C22.2 n° 14

Certificates

CSAus
cULus
EAC

ETIM classification

ETIM 8.0

EC001037 -
Motor
starter/Motor
starter
combination